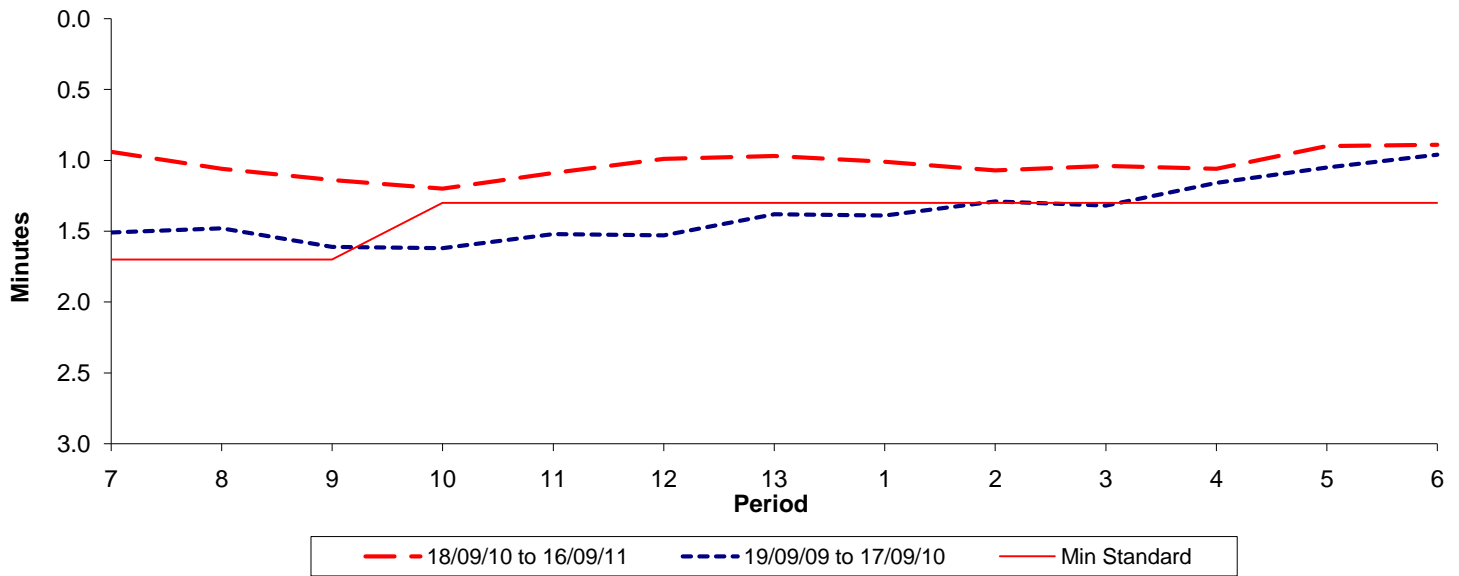




Reliability Performance (High Frequency)

Excess Waiting Time (minutes)

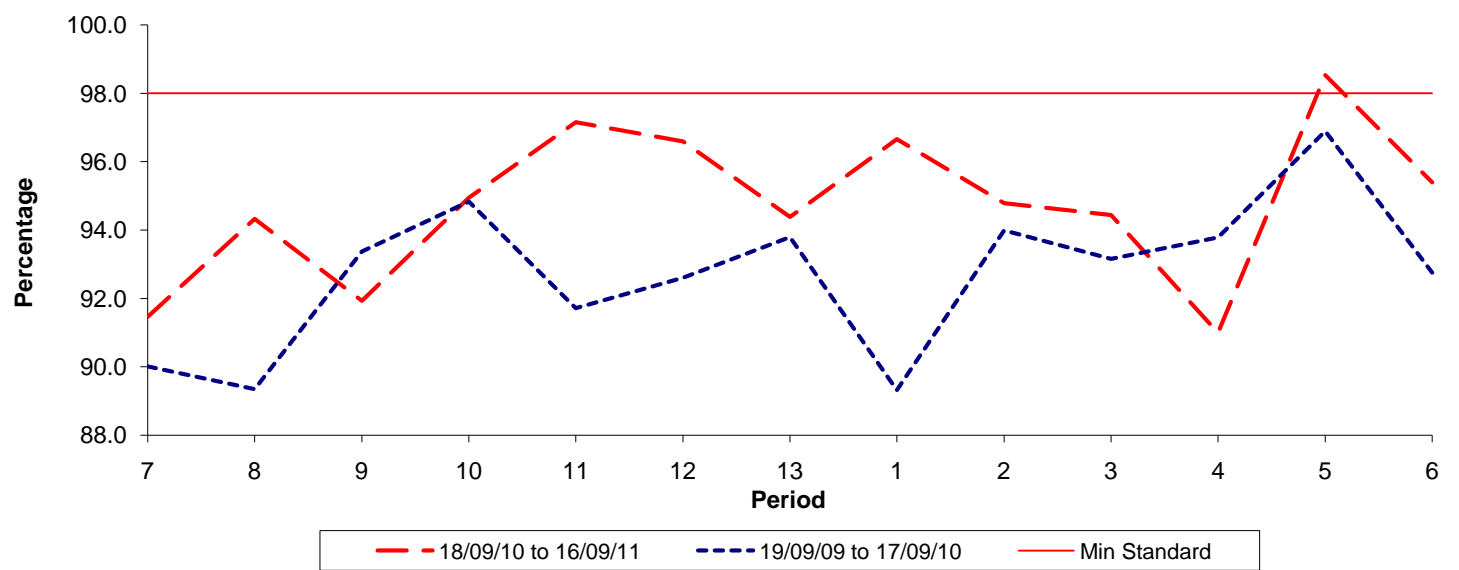


Date Range / Period	7	8	9	10	11	12	13	1	2	3	4	5	6
18/09/10 to 16/09/11	0.94	1.06	1.14	1.20	1.09	0.99	0.97	1.01	1.07	1.04	1.06	0.90	0.89
19/09/09 to 17/09/10	1.51	1.48	1.61	1.62	1.52	1.53	1.38	1.39	1.29	1.32	1.16	1.05	0.96
Min Standard	1.70	1.70	1.70	1.30	1.30	1.30	1.30	1.30	1.30	1.30	1.30	1.30	1.30

Excess Waiting Time figures are based on 12 weeks data

Kilometre Performance

% Kilometres Operated



Date Range / Period	7	8	9	10	11	12	13	1	2	3	4	5	6
18/09/10 to 16/09/11	91.46	94.32	91.93	94.94	97.15	96.59	94.38	96.66	94.78	94.44	90.99	98.53	95.39
19/09/09 to 17/09/10	90.01	89.35	93.37	94.83	91.72	92.60	93.79	89.32	93.99	93.16	93.78	96.89	92.75
Min Standard	98.00	98.00	98.00	98.00	98.00	98.00	98.00	98.00	98.00	98.00	98.00	98.00	98.00

Kilometre figures are based on 4 weeks data