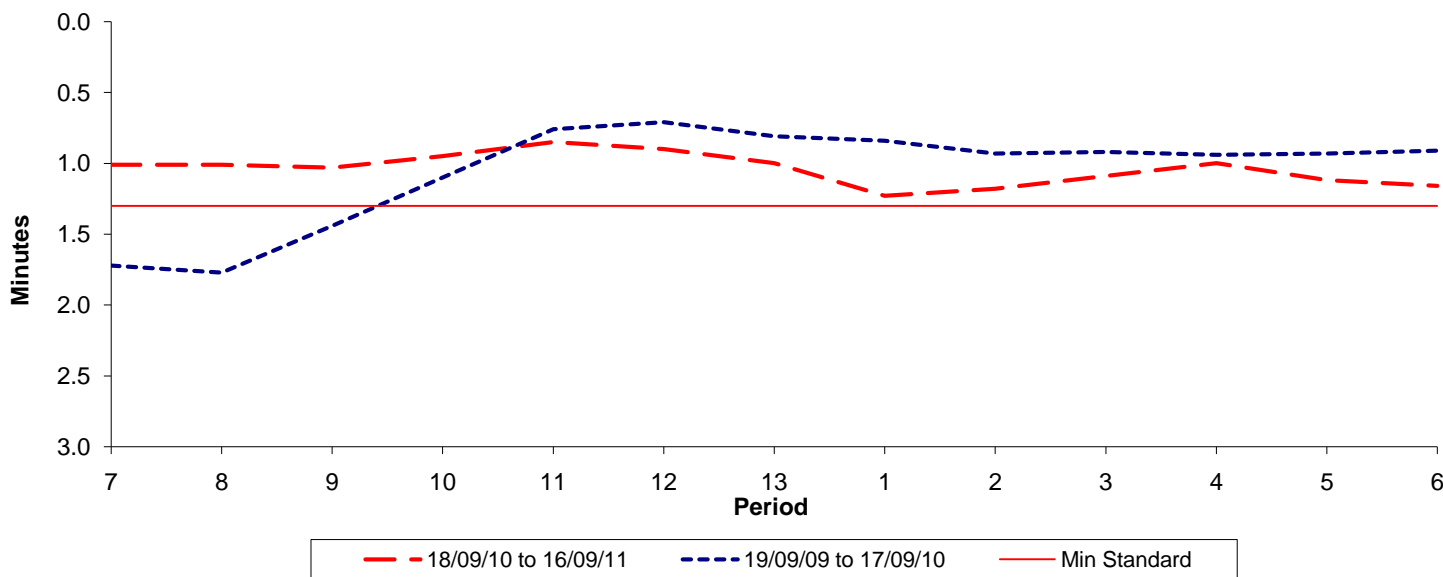




**Reliability Performance ( High Frequency )**

**Excess Waiting Time (minutes)**

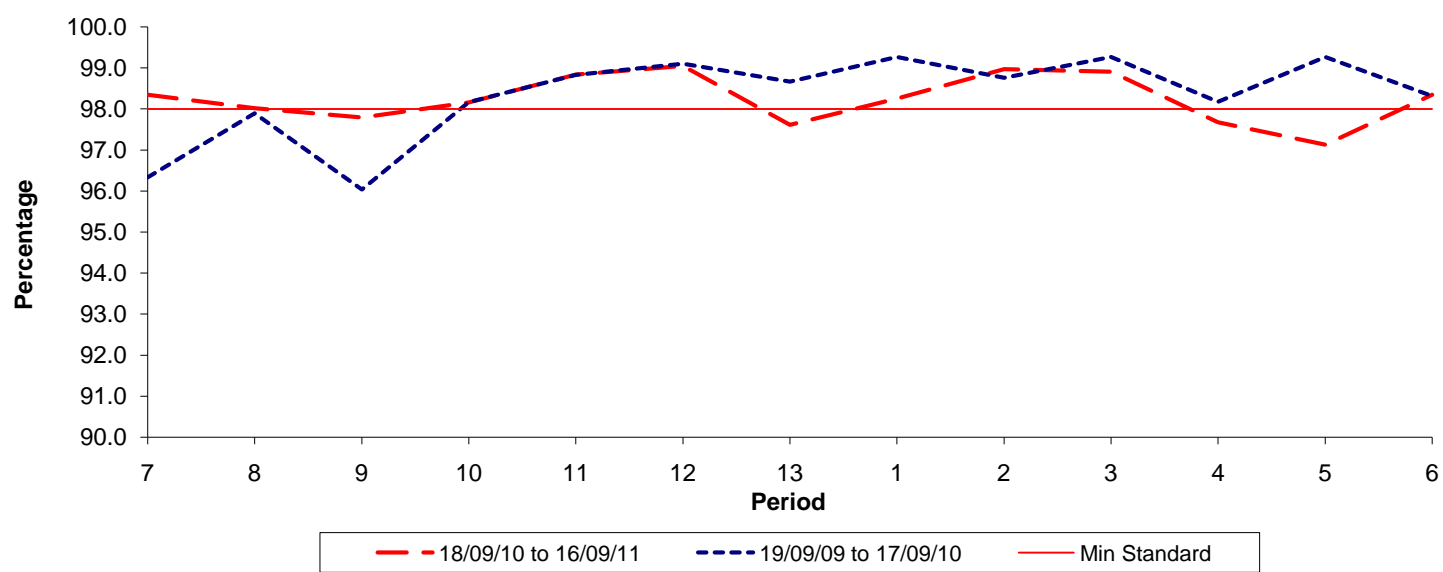


Date Range / Period	7	8	9	10	11	12	13	1	2	3	4	5	6
18/09/10 to 16/09/11	1.01	1.01	1.03	0.95	0.85	0.90	1.00	1.23	1.18	1.09	1.00	1.12	1.16
19/09/09 to 17/09/10	1.72	1.77	1.44	1.10	0.76	0.71	0.81	0.84	0.93	0.92	0.94	0.93	0.91
Min Standard	1.30	1.30	1.30	1.30	1.30	1.30	1.30	1.30	1.30	1.30	1.30	1.30	1.30

Excess Waiting Time figures are based on 12 weeks data

**Kilometre Performance**

**% Kilometres Operated**



Date Range / Period	7	8	9	10	11	12	13	1	2	3	4	5	6
18/09/10 to 16/09/11	98.35	98.02	97.79	98.16	98.84	99.05	97.61	98.25	98.97	98.91	97.68	97.13	98.35
19/09/09 to 17/09/10	96.34	97.90	96.04	98.17	98.83	99.11	98.67	99.27	98.76	99.27	98.18	99.27	98.32
Min Standard	98.00	98.00	98.00	98.00	98.00	98.00	98.00	98.00	98.00	98.00	98.00	98.00	98.00

Kilometre figures are based on 4 weeks data