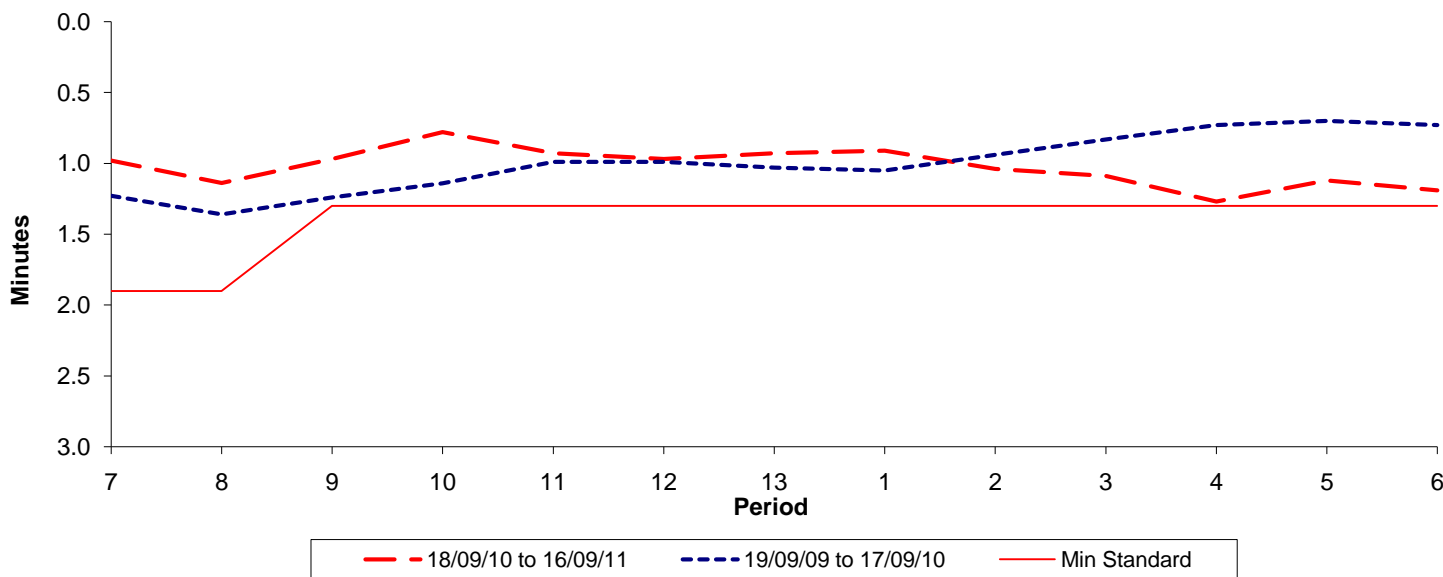




Reliability Performance (High Frequency)

Excess Waiting Time (minutes)

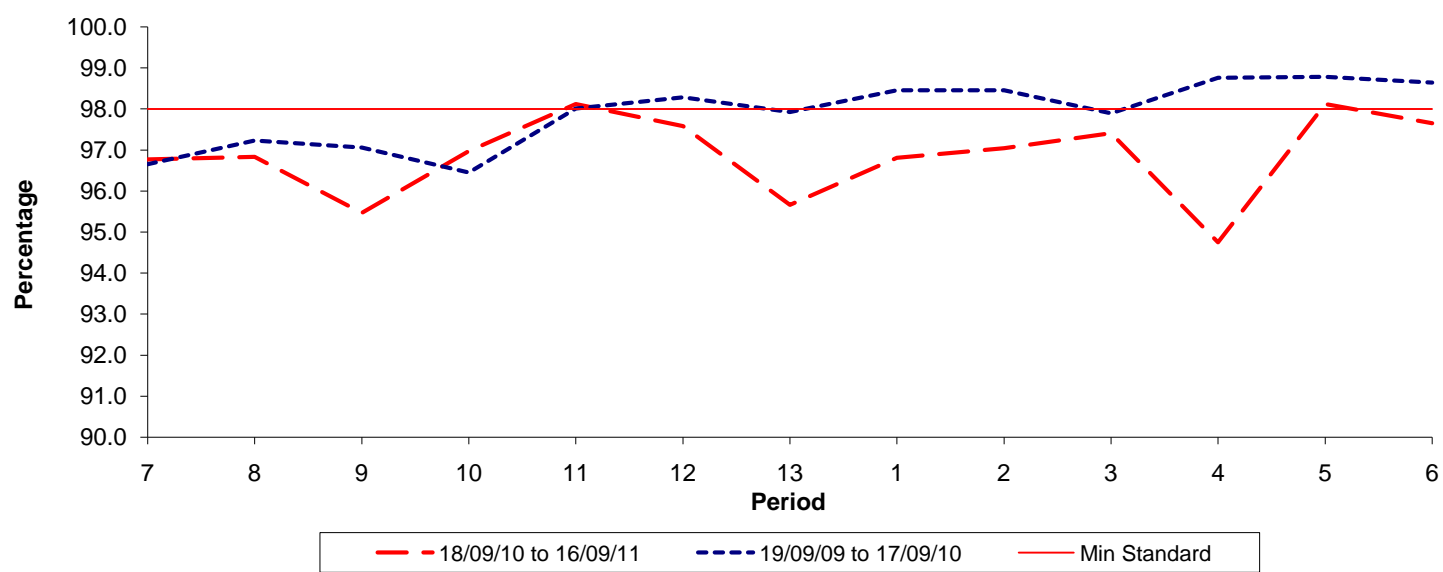


Date Range / Period	7	8	9	10	11	12	13	1	2	3	4	5	6
18/09/10 to 16/09/11	0.98	1.14	0.97	0.78	0.93	0.97	0.93	0.91	1.04	1.09	1.27	1.12	1.19
19/09/09 to 17/09/10	1.23	1.36	1.24	1.14	0.99	0.99	1.03	1.05	0.94	0.83	0.73	0.70	0.73
Min Standard	1.90	1.90	1.30	1.30	1.30	1.30	1.30	1.30	1.30	1.30	1.30	1.30	1.30

Excess Waiting Time figures are based on 12 weeks data

Kilometre Performance

% Kilometres Operated



Date Range / Period	7	8	9	10	11	12	13	1	2	3	4	5	6
18/09/10 to 16/09/11	96.77	96.83	95.47	96.97	98.12	97.58	95.66	96.81	97.04	97.41	94.75	98.12	97.65
19/09/09 to 17/09/10	96.65	97.23	97.06	96.45	98.01	98.28	97.92	98.45	98.45	97.89	98.76	98.78	98.64
Min Standard	98.00	98.00	98.00	98.00	98.00	98.00	98.00	98.00	98.00	98.00	98.00	98.00	98.00

Kilometre figures are based on 4 weeks data