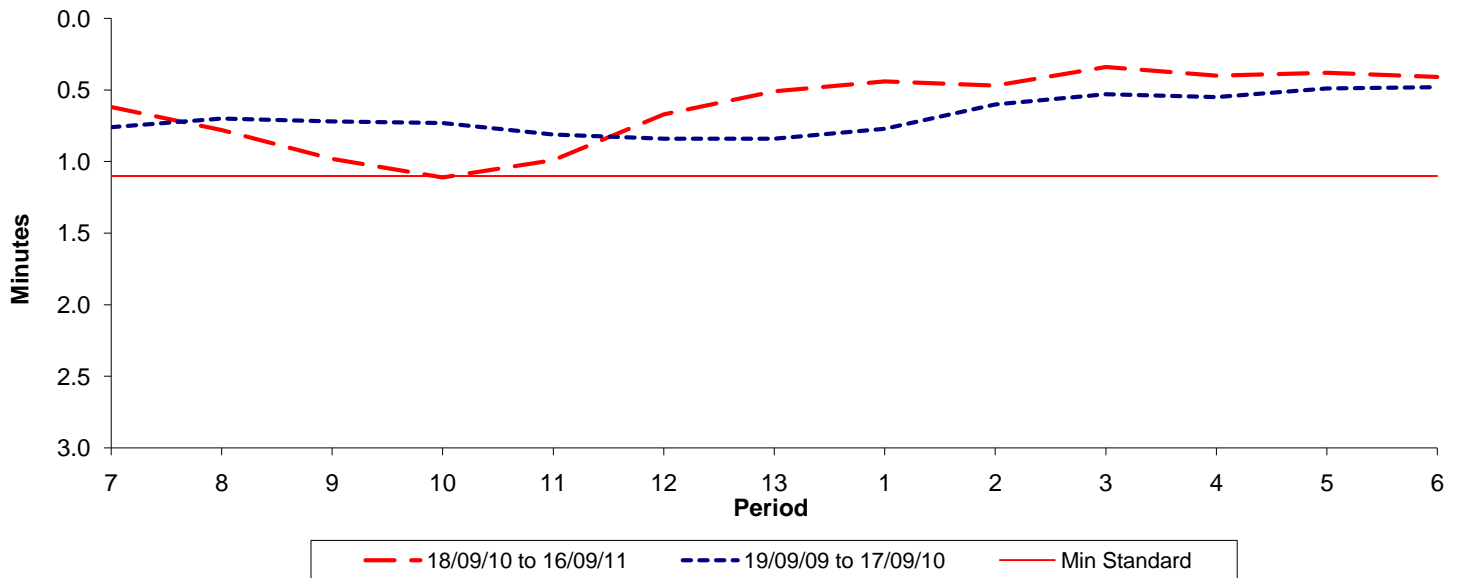




Reliability Performance (High Frequency)

Excess Waiting Time (minutes)

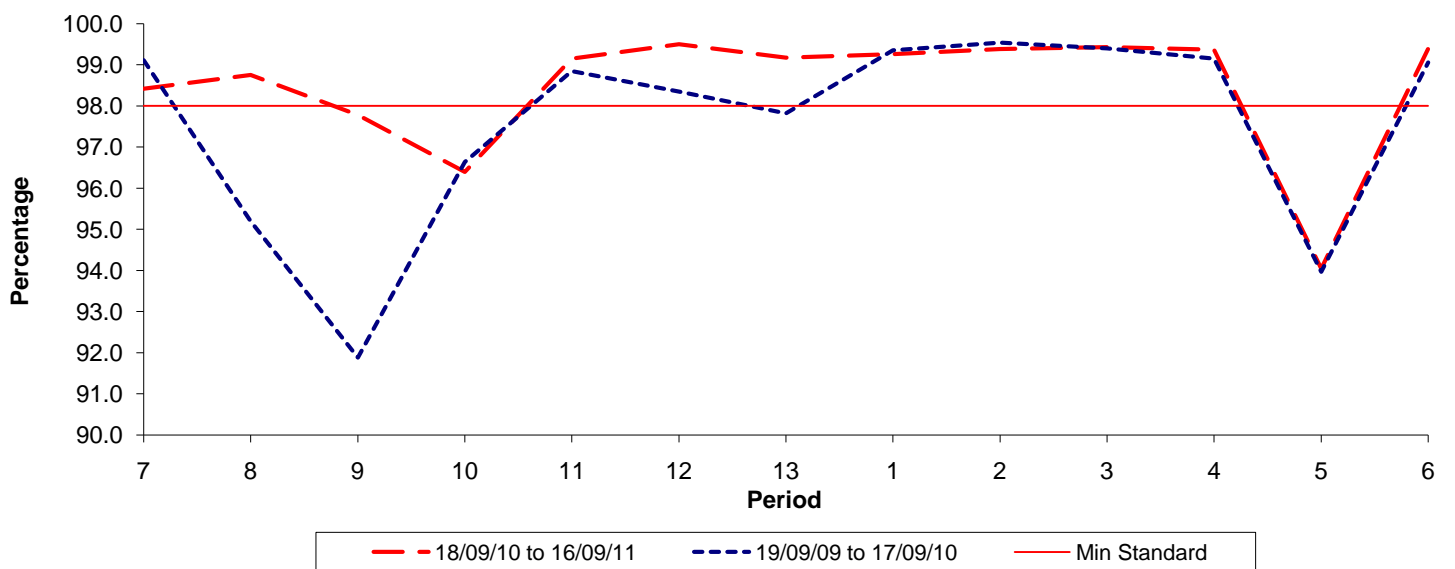


Date Range / Period	7	8	9	10	11	12	13	1	2	3	4	5	6
18/09/10 to 16/09/11	0.62	0.78	0.98	1.11	0.99	0.67	0.51	0.44	0.47	0.34	0.40	0.38	0.41
19/09/09 to 17/09/10	0.76	0.70	0.72	0.73	0.81	0.84	0.84	0.77	0.60	0.53	0.55	0.49	0.48
Min Standard	1.10	1.10	1.10	1.10	1.10	1.10	1.10	1.10	1.10	1.10	1.10	1.10	1.10

Excess Waiting Time figures are based on 12 weeks data

Kilometre Performance

% Kilometres Operated



Date Range / Period	7	8	9	10	11	12	13	1	2	3	4	5	6
18/09/10 to 16/09/11	98.42	98.75	97.78	96.40	99.15	99.50	99.17	99.26	99.38	99.43	99.37	94.05	99.39
19/09/09 to 17/09/10	99.11	95.20	91.88	96.64	98.85	98.35	97.82	99.35	99.54	99.40	99.15	93.97	99.06
Min Standard	98.00	98.00	98.00	98.00	98.00	98.00	98.00	98.00	98.00	98.00	98.00	98.00	98.00

Kilometre figures are based on 4 weeks data