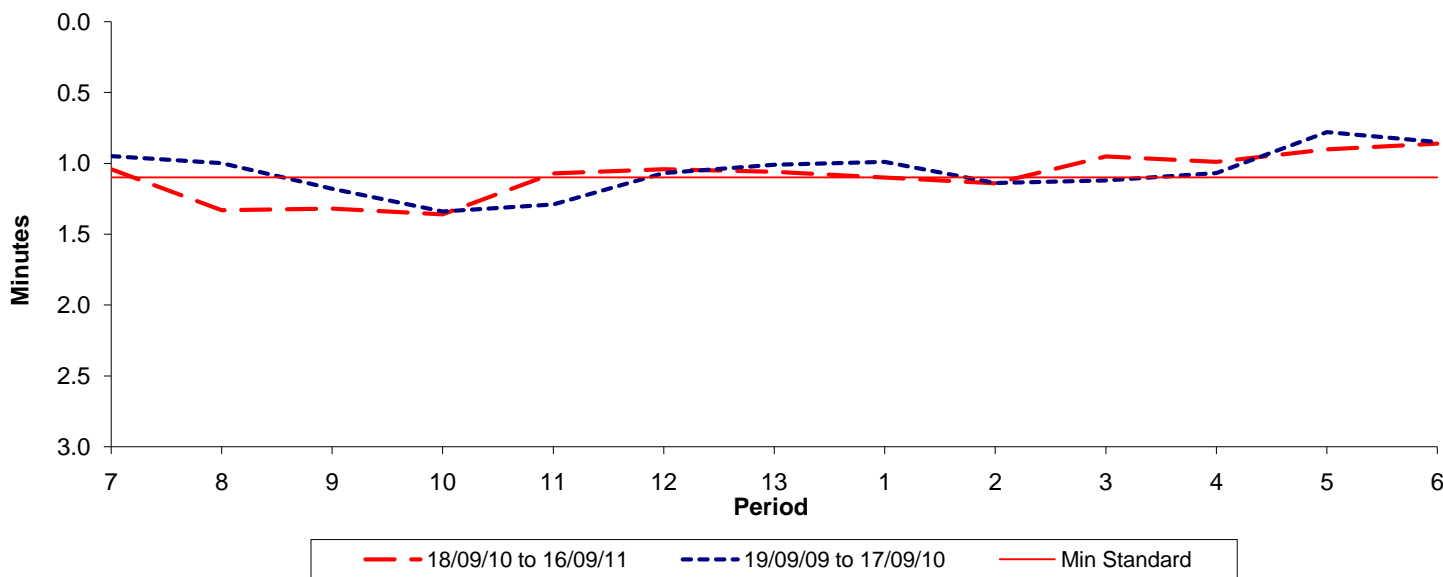




**Reliability Performance ( High Frequency )**

**Excess Waiting Time (minutes)**

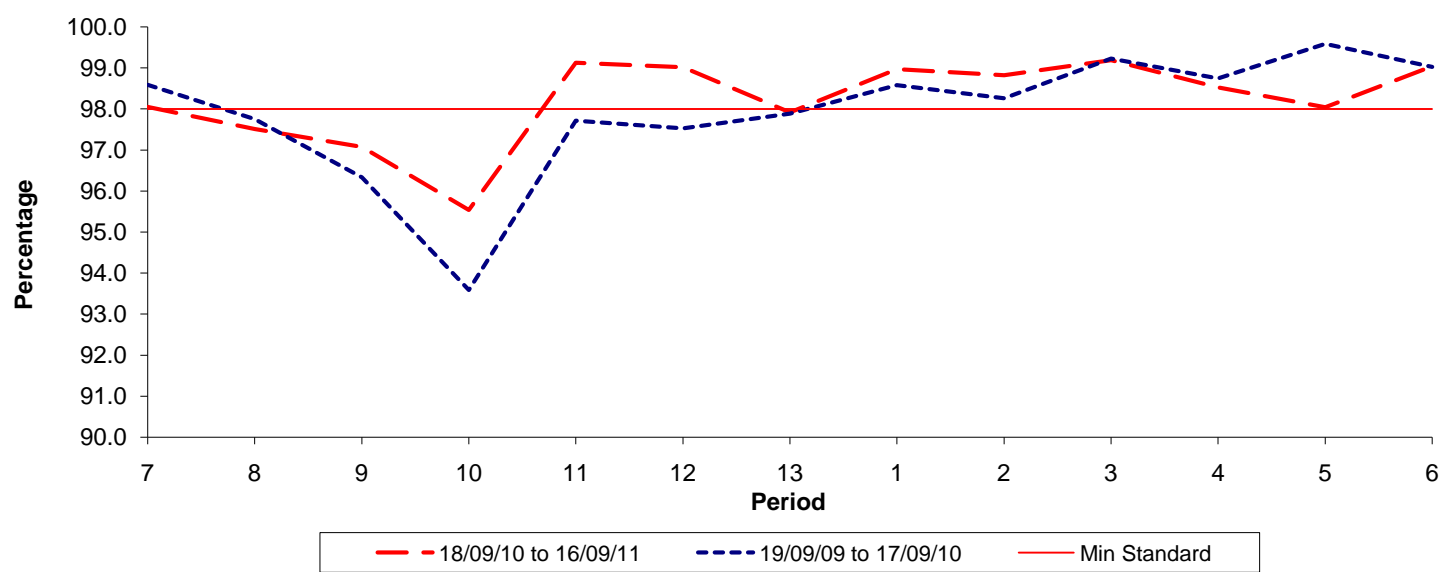


Date Range / Period	7	8	9	10	11	12	13	1	2	3	4	5	6
18/09/10 to 16/09/11	1.04	1.33	1.32	1.36	1.07	1.04	1.06	1.10	1.14	0.95	0.99	0.90	0.86
19/09/09 to 17/09/10	0.95	1.00	1.18	1.34	1.29	1.07	1.01	0.99	1.14	1.12	1.07	0.78	0.85
Min Standard	1.10	1.10	1.10	1.10	1.10	1.10	1.10	1.10	1.10	1.10	1.10	1.10	1.10

Excess Waiting Time figures are based on 12 weeks data

**Kilometre Performance**

**% Kilometres Operated**



Date Range / Period	7	8	9	10	11	12	13	1	2	3	4	5	6
18/09/10 to 16/09/11	98.05	97.51	97.08	95.54	99.13	99.02	97.92	98.97	98.82	99.19	98.53	98.04	99.04
19/09/09 to 17/09/10	98.59	97.76	96.34	93.59	97.72	97.53	97.89	98.58	98.26	99.23	98.75	99.59	99.03
Min Standard	98.00	98.00	98.00	98.00	98.00	98.00	98.00	98.00	98.00	98.00	98.00	98.00	98.00

Kilometre figures are based on 4 weeks data