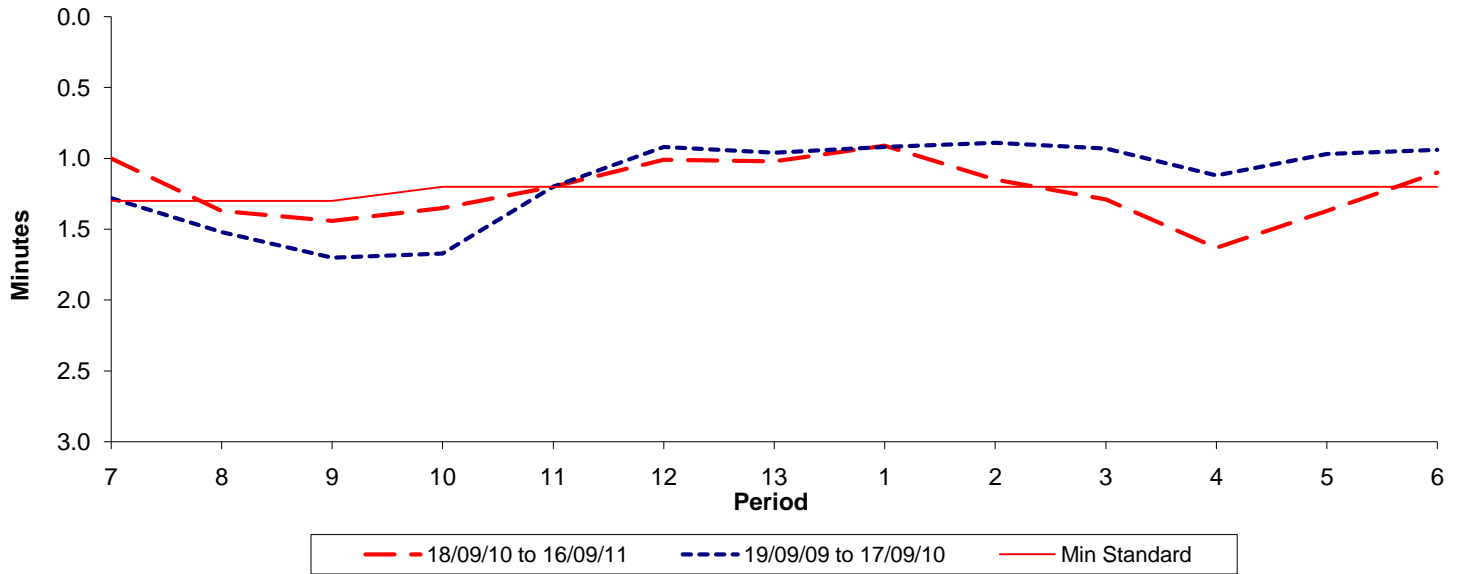




Reliability Performance (High Frequency)

Excess Waiting Time (minutes)

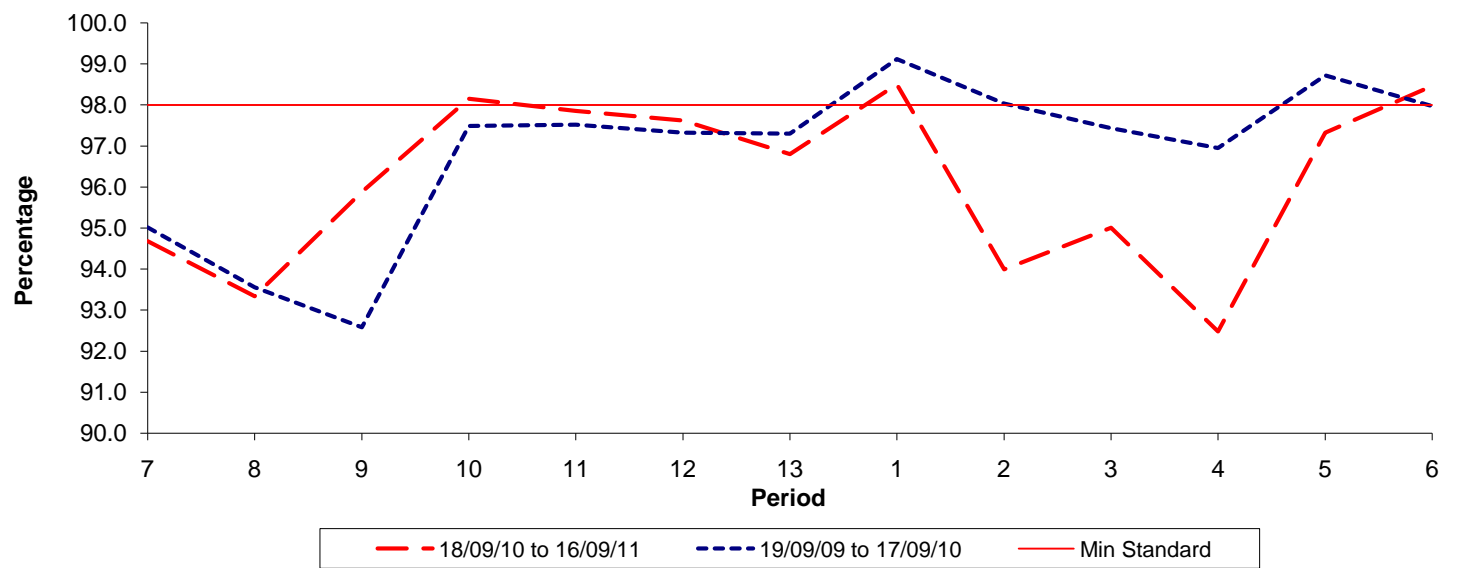


Date Range / Period	7	8	9	10	11	12	13	1	2	3	4	5	6
18/09/10 to 16/09/11	1.00	1.37	1.44	1.35	1.20	1.01	1.02	0.91	1.15	1.29	1.63	1.37	1.10
19/09/09 to 17/09/10	1.28	1.52	1.70	1.67	1.20	0.92	0.96	0.92	0.89	0.93	1.12	0.97	0.94
Min Standard	1.30	1.30	1.30	1.20	1.20	1.20	1.20	1.20	1.20	1.20	1.20	1.20	1.20

Excess Waiting Time figures are based on 12 weeks data

Kilometre Performance

% Kilometres Operated



Date Range / Period	7	8	9	10	11	12	13	1	2	3	4	5	6
18/09/10 to 16/09/11	94.68	93.34	95.88	98.15	97.86	97.62	96.80	98.50	93.99	95.01	92.48	97.32	98.46
19/09/09 to 17/09/10	95.01	93.55	92.58	97.48	97.51	97.32	97.30	99.12	98.03	97.43	96.95	98.72	97.97
Min Standard	98.00	98.00	98.00	98.00	98.00	98.00	98.00	98.00	98.00	98.00	98.00	98.00	98.00

Kilometre figures are based on 4 weeks data