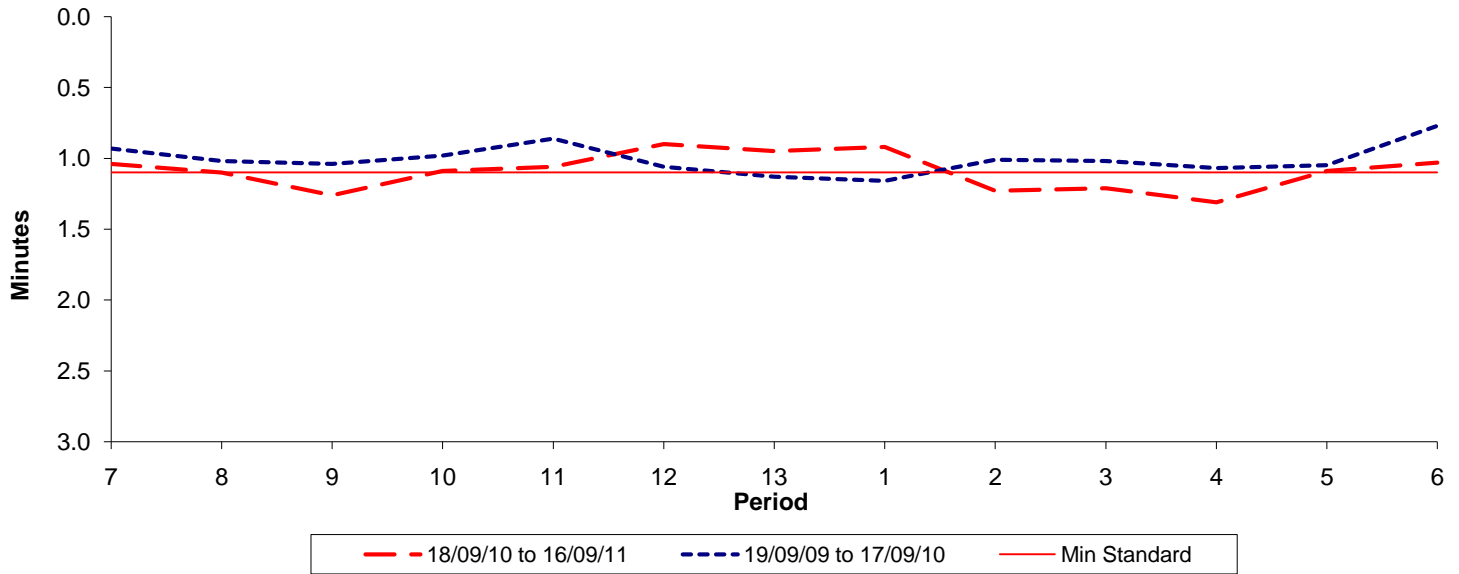




Reliability Performance (High Frequency)

Excess Waiting Time (minutes)

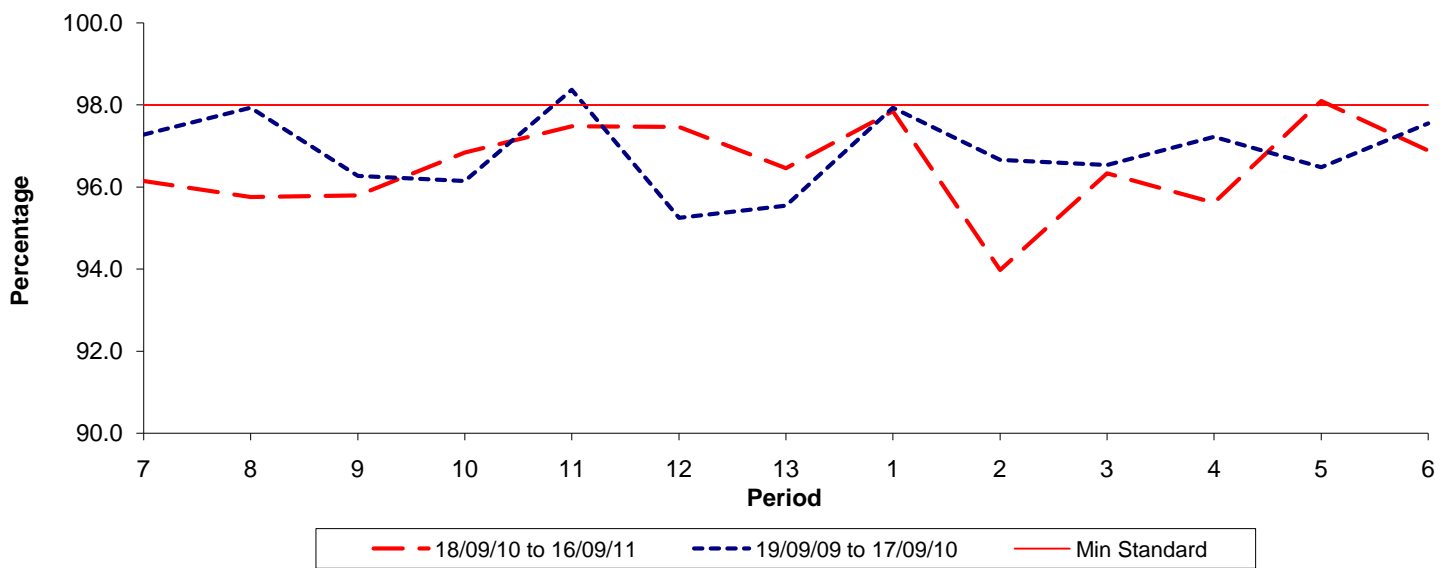


Date Range / Period	7	8	9	10	11	12	13	1	2	3	4	5	6
18/09/10 to 16/09/11	1.04	1.10	1.26	1.09	1.06	0.90	0.95	0.92	1.23	1.21	1.31	1.09	1.03
19/09/09 to 17/09/10	0.93	1.02	1.04	0.98	0.86	1.06	1.13	1.16	1.01	1.02	1.07	1.05	0.77
Min Standard	1.10	1.10	1.10	1.10	1.10	1.10	1.10	1.10	1.10	1.10	1.10	1.10	1.10

Excess Waiting Time figures are based on 12 weeks data

Kilometre Performance

% Kilometres Operated



Date Range / Period	7	8	9	10	11	12	13	1	2	3	4	5	6
18/09/10 to 16/09/11	96.15	95.76	95.80	96.84	97.48	97.47	96.46	97.85	93.98	96.34	95.62	98.10	96.89
19/09/09 to 17/09/10	97.28	97.93	96.27	96.15	98.37	95.25	95.55	97.93	96.66	96.54	97.22	96.48	97.55
Min Standard	98.00	98.00	98.00	98.00	98.00	98.00	98.00	98.00	98.00	98.00	98.00	98.00	98.00

Kilometre figures are based on 4 weeks data