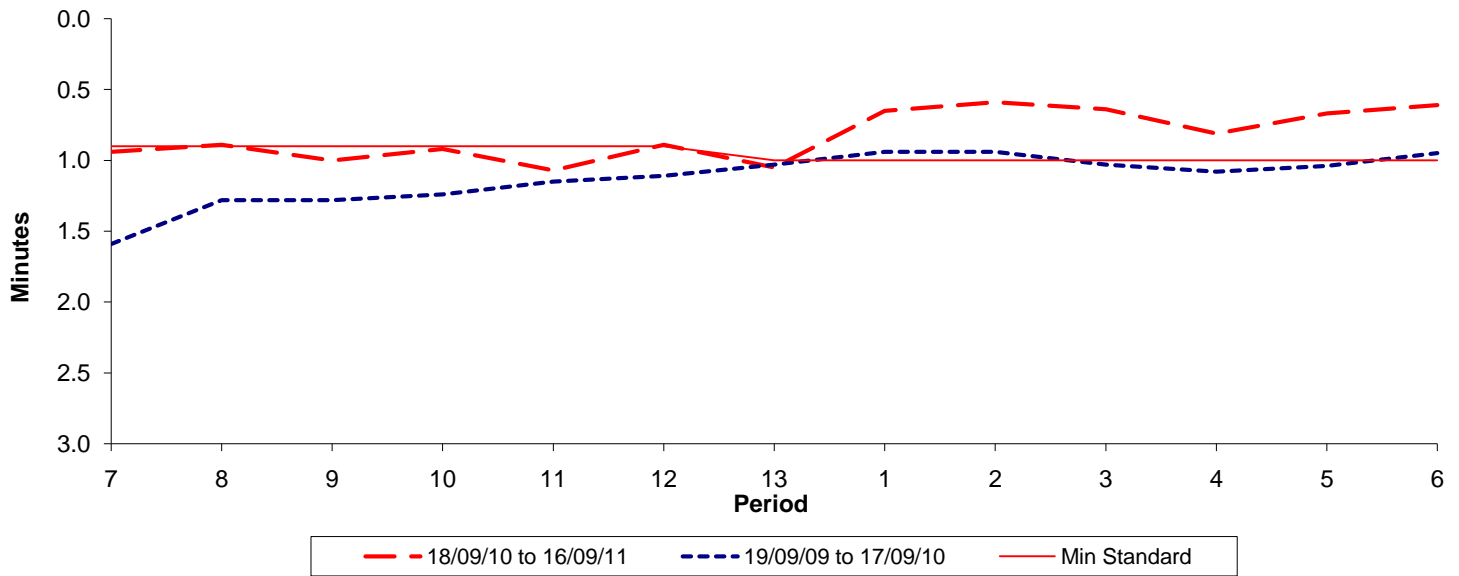




Reliability Performance (High Frequency)

Excess Waiting Time (minutes)

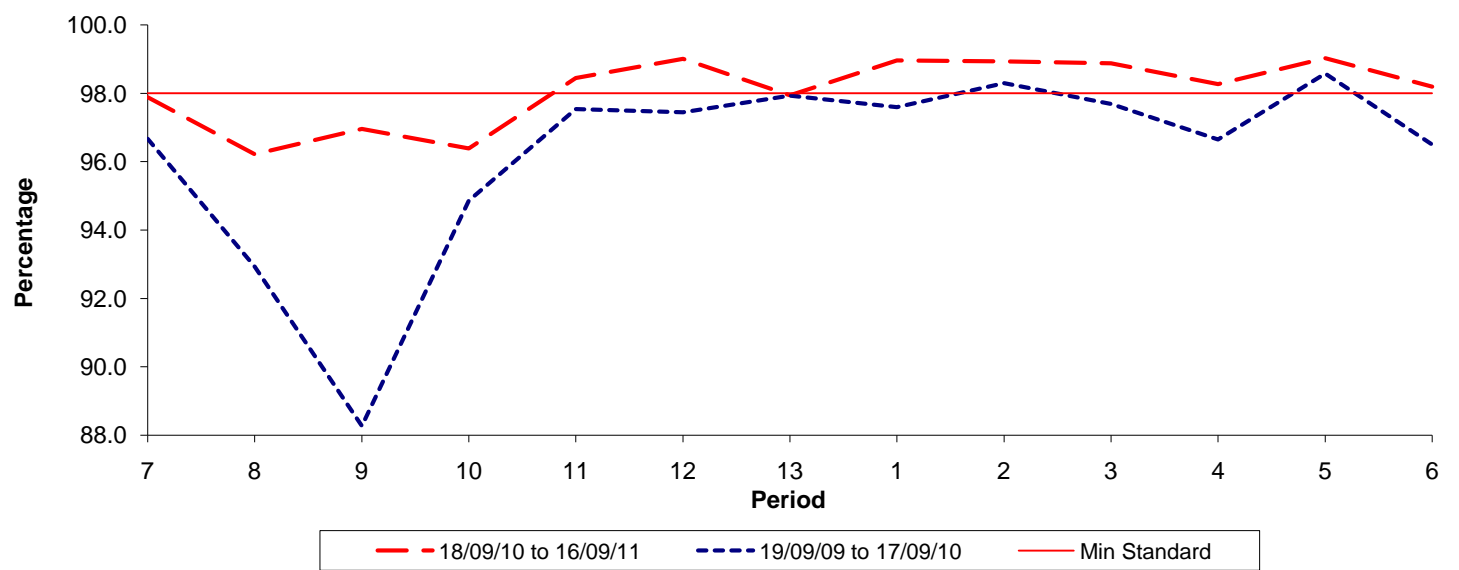


Date Range / Period	7	8	9	10	11	12	13	1	2	3	4	5	6
18/09/10 to 16/09/11	0.94	0.89	1.00	0.92	1.07	0.89	1.05	0.65	0.59	0.64	0.81	0.67	0.61
19/09/09 to 17/09/10	1.59	1.28	1.28	1.24	1.15	1.11	1.03	0.94	0.94	1.03	1.08	1.04	0.95
Min Standard	0.90	0.90	0.90	0.90	0.90	0.90	1.00	1.00	1.00	1.00	1.00	1.00	1.00

Excess Waiting Time figures are based on 12 weeks data

Kilometre Performance

% Kilometres Operated



Date Range / Period	7	8	9	10	11	12	13	1	2	3	4	5	6
18/09/10 to 16/09/11	97.89	96.22	96.96	96.39	98.45	99.01	97.94	98.96	98.94	98.88	98.27	99.03	98.20
19/09/09 to 17/09/10	96.67	92.93	88.27	94.86	97.54	97.45	97.93	97.60	98.30	97.69	96.65	98.58	96.50
Min Standard	98.00	98.00	98.00	98.00	98.00	98.00	98.00	98.00	98.00	98.00	98.00	98.00	98.00

Kilometre figures are based on 4 weeks data