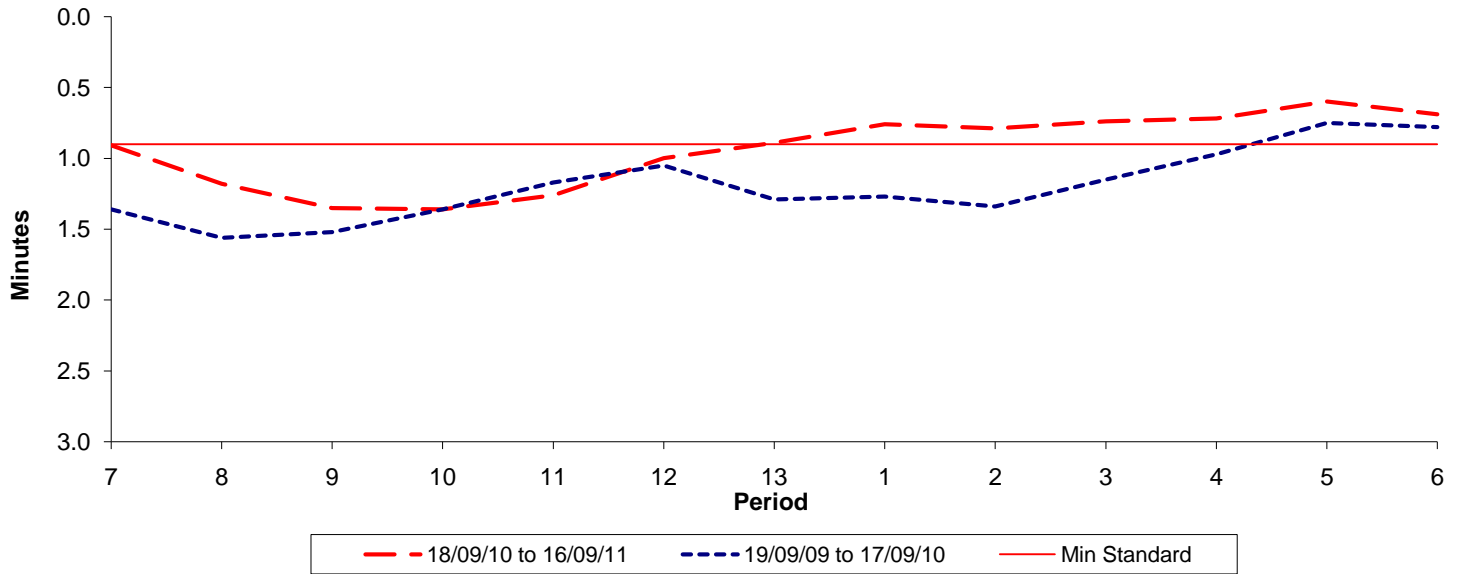




Reliability Performance (High Frequency)

Excess Waiting Time (minutes)

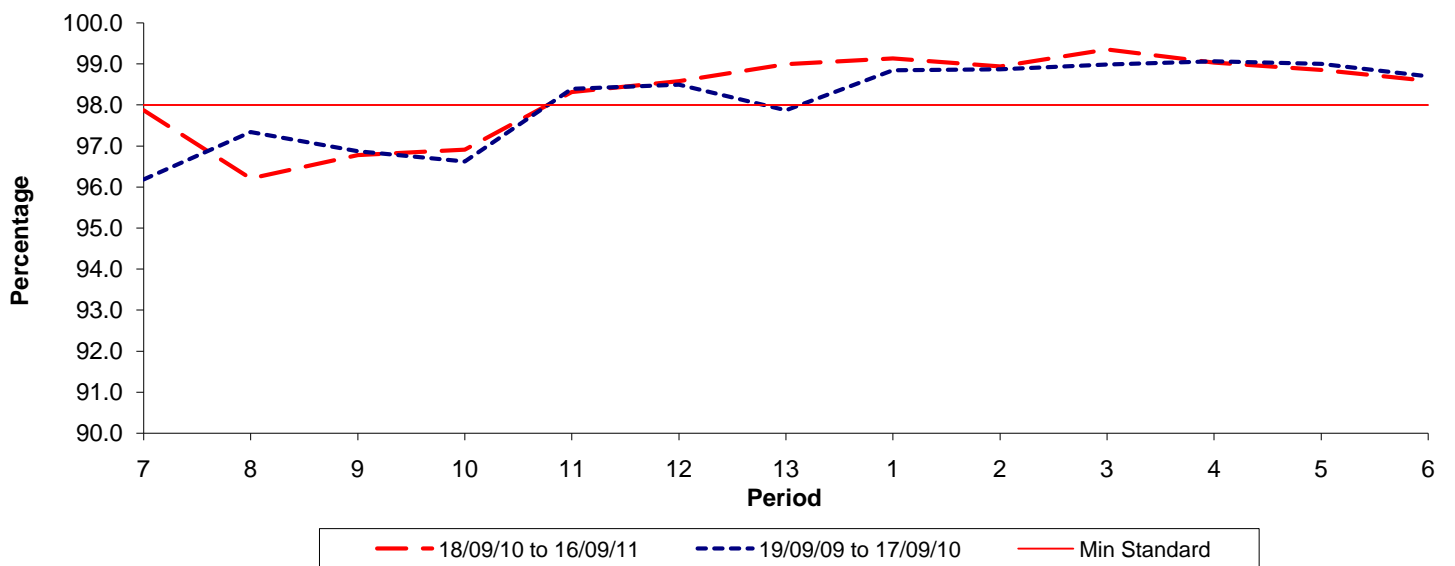


Date Range / Period	7	8	9	10	11	12	13	1	2	3	4	5	6
18/09/10 to 16/09/11	0.91	1.18	1.35	1.36	1.26	1.00	0.89	0.76	0.79	0.74	0.72	0.60	0.69
19/09/09 to 17/09/10	1.36	1.56	1.52	1.36	1.17	1.05	1.29	1.27	1.34	1.15	0.97	0.75	0.78
Min Standard	0.90	0.90	0.90	0.90	0.90	0.90	0.90	0.90	0.90	0.90	0.90	0.90	0.90

Excess Waiting Time figures are based on 12 weeks data

Kilometre Performance

% Kilometres Operated



Date Range / Period	7	8	9	10	11	12	13	1	2	3	4	5	6
18/09/10 to 16/09/11	97.87	96.21	96.78	96.91	98.31	98.58	98.99	99.13	98.94	99.35	99.03	98.85	98.59
19/09/09 to 17/09/10	96.18	97.34	96.87	96.62	98.40	98.50	97.87	98.85	98.87	98.99	99.07	99.00	98.70
Min Standard	98.00	98.00	98.00	98.00	98.00	98.00	98.00	98.00	98.00	98.00	98.00	98.00	98.00

Kilometre figures are based on 4 weeks data