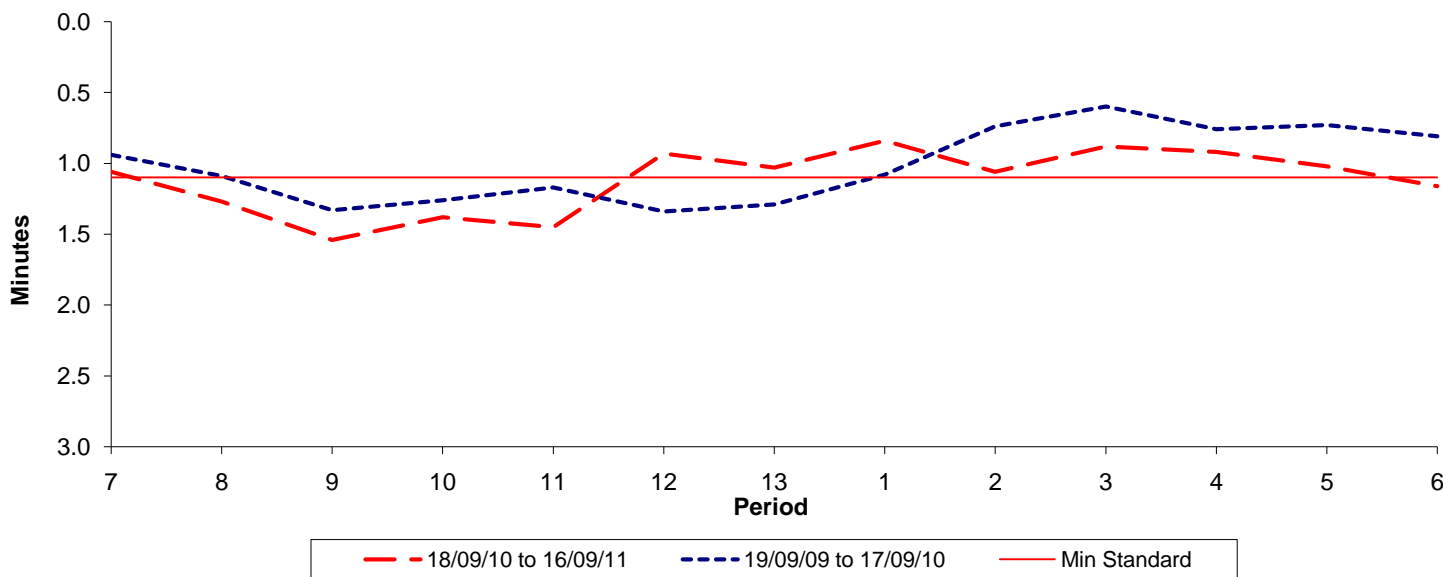




Reliability Performance (High Frequency)

Excess Waiting Time (minutes)

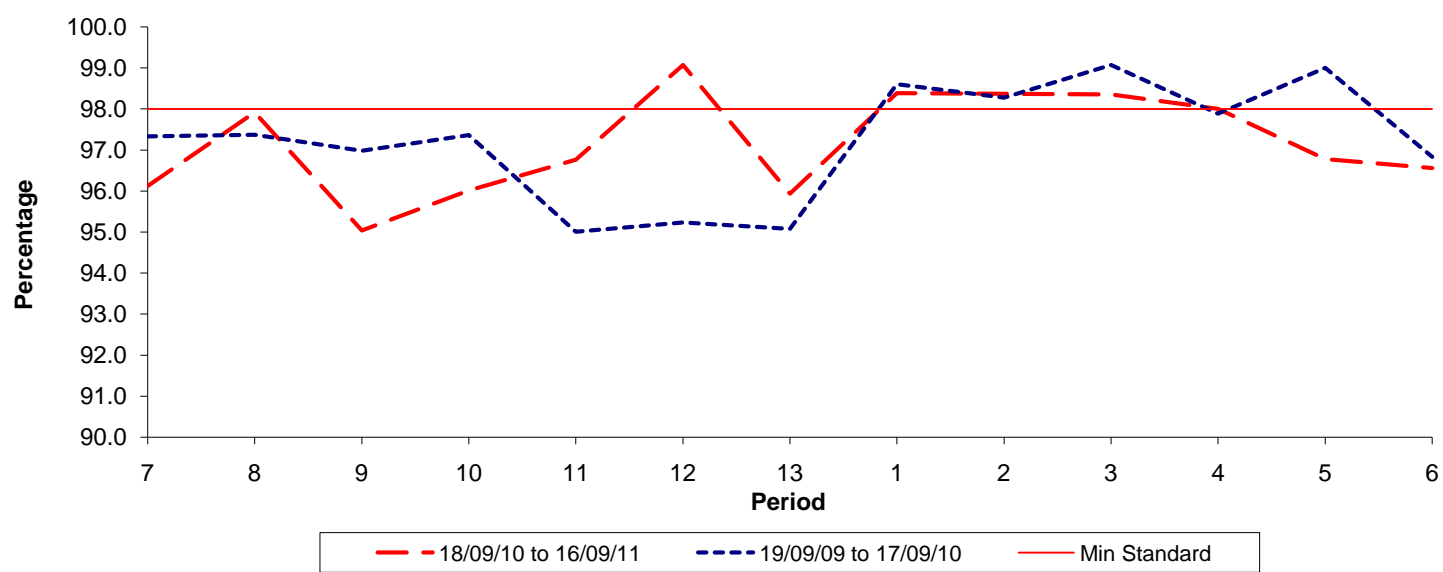


Date Range / Period	7	8	9	10	11	12	13	1	2	3	4	5	6
18/09/10 to 16/09/11	1.06	1.27	1.54	1.38	1.45	0.93	1.03	0.84	1.06	0.88	0.92	1.02	1.16
19/09/09 to 17/09/10	0.94	1.09	1.33	1.26	1.17	1.34	1.29	1.08	0.74	0.60	0.76	0.73	0.81
Min Standard	1.10	1.10	1.10	1.10	1.10	1.10	1.10	1.10	1.10	1.10	1.10	1.10	1.10

Excess Waiting Time figures are based on 12 weeks data

Kilometre Performance

% Kilometres Operated



Date Range / Period	7	8	9	10	11	12	13	1	2	3	4	5	6
18/09/10 to 16/09/11	96.12	97.92	95.04	96.02	96.76	99.07	95.94	98.38	98.37	98.35	98.00	96.78	96.56
19/09/09 to 17/09/10	97.33	97.37	96.98	97.36	95.01	95.23	95.07	98.60	98.28	99.08	97.89	99.01	96.83
Min Standard	98.00	98.00	98.00	98.00	98.00	98.00	98.00	98.00	98.00	98.00	98.00	98.00	98.00

Kilometre figures are based on 4 weeks data