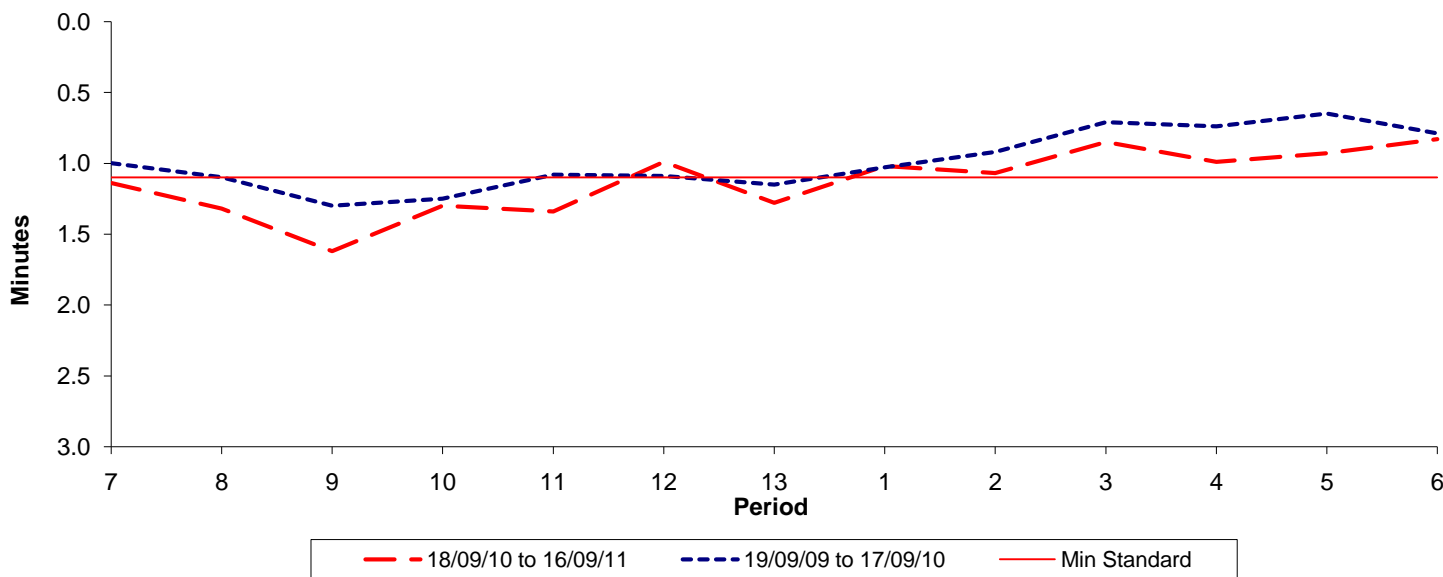




Reliability Performance (High Frequency)

Excess Waiting Time (minutes)

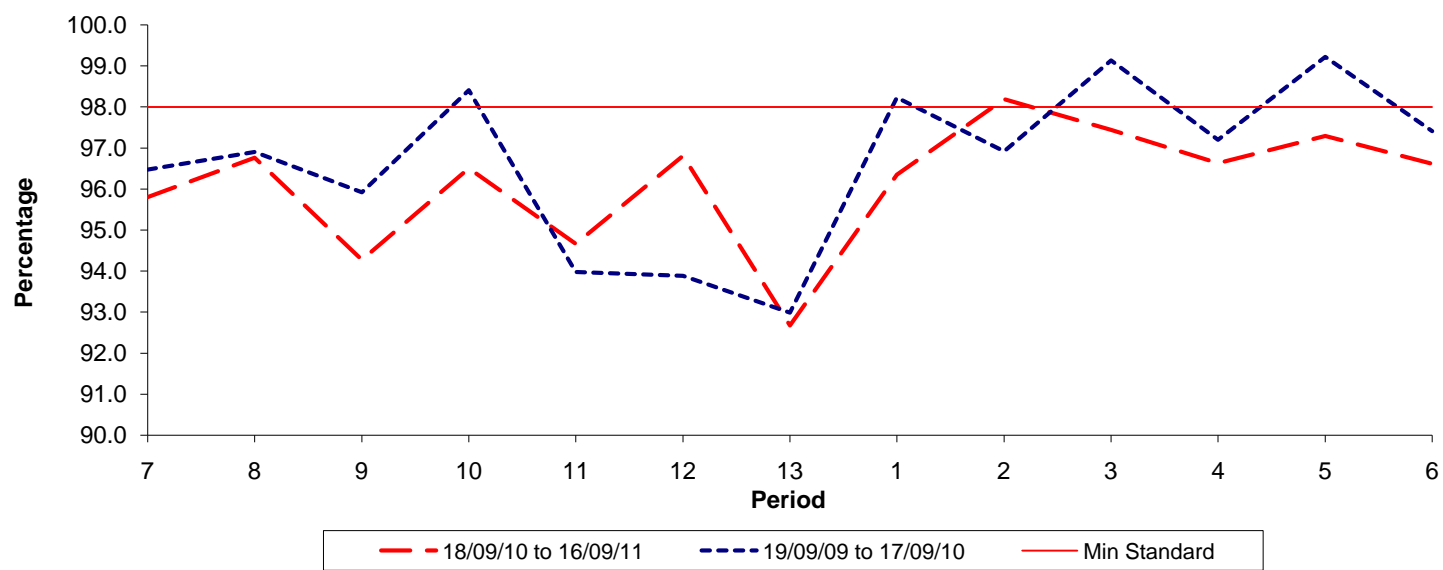


Date Range / Period	7	8	9	10	11	12	13	1	2	3	4	5	6
18/09/10 to 16/09/11	1.14	1.32	1.62	1.30	1.34	0.99	1.28	1.02	1.07	0.85	0.99	0.93	0.83
19/09/09 to 17/09/10	1.00	1.10	1.30	1.25	1.08	1.09	1.15	1.03	0.92	0.71	0.74	0.65	0.79
Min Standard	1.10	1.10	1.10	1.10	1.10	1.10	1.10	1.10	1.10	1.10	1.10	1.10	1.10

Excess Waiting Time figures are based on 12 weeks data

Kilometre Performance

% Kilometres Operated



Date Range / Period	7	8	9	10	11	12	13	1	2	3	4	5	6
18/09/10 to 16/09/11	95.80	96.76	94.27	96.51	94.66	96.81	92.67	96.35	98.19	97.44	96.63	97.29	96.61
19/09/09 to 17/09/10	96.48	96.90	95.92	98.41	93.98	93.88	92.98	98.23	96.92	99.14	97.20	99.22	97.41
Min Standard	98.00	98.00	98.00	98.00	98.00	98.00	98.00	98.00	98.00	98.00	98.00	98.00	98.00

Kilometre figures are based on 4 weeks data