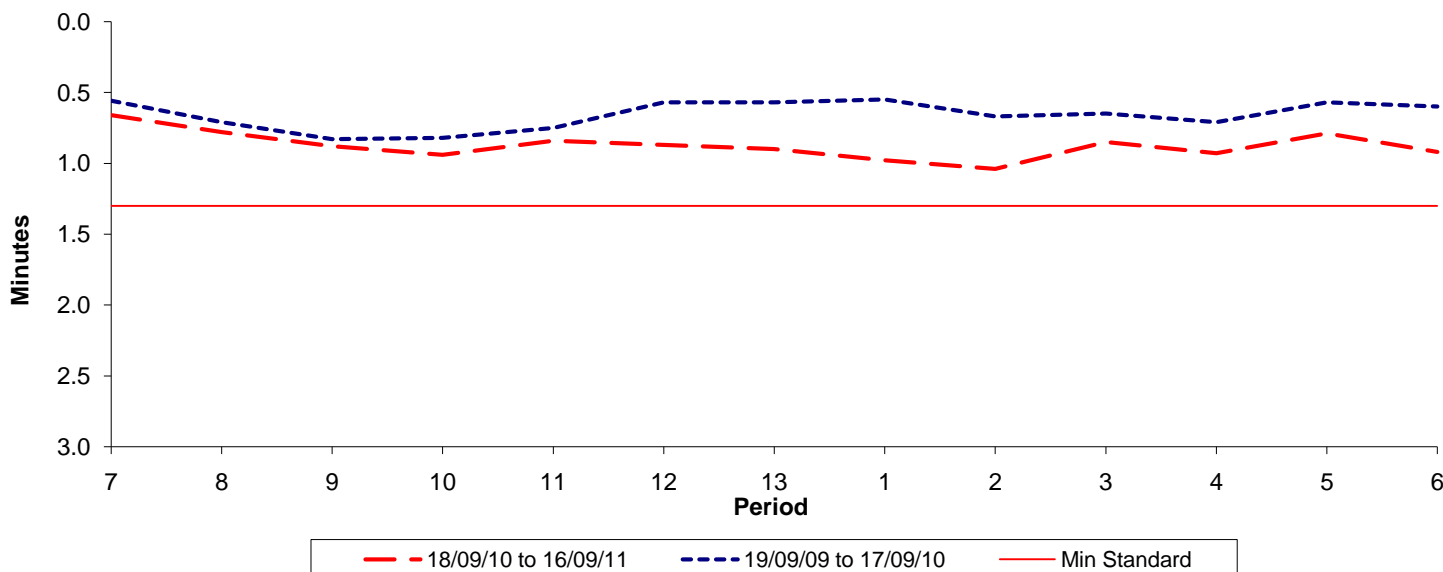




Reliability Performance (High Frequency)

Excess Waiting Time (minutes)

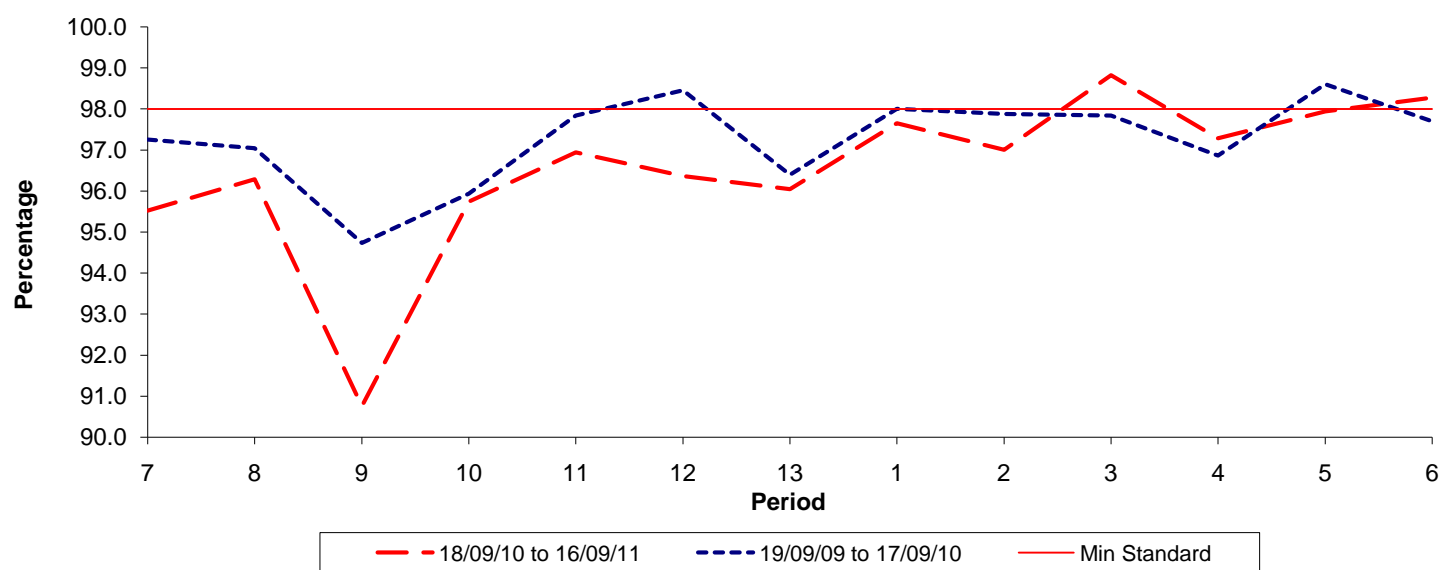


Date Range / Period	7	8	9	10	11	12	13	1	2	3	4	5	6
18/09/10 to 16/09/11	0.66	0.78	0.88	0.94	0.84	0.87	0.90	0.98	1.04	0.85	0.93	0.79	0.92
19/09/09 to 17/09/10	0.56	0.71	0.83	0.82	0.75	0.57	0.57	0.55	0.67	0.65	0.71	0.57	0.60
Min Standard	1.30	1.30	1.30	1.30	1.30	1.30	1.30	1.30	1.30	1.30	1.30	1.30	1.30

Excess Waiting Time figures are based on 12 weeks data

Kilometre Performance

% Kilometres Operated



Date Range / Period	7	8	9	10	11	12	13	1	2	3	4	5	6
18/09/10 to 16/09/11	95.52	96.28	90.75	95.74	96.94	96.36	96.04	97.65	97.00	98.82	97.28	97.94	98.27
19/09/09 to 17/09/10	97.25	97.04	94.73	95.93	97.84	98.45	96.39	98.00	97.87	97.83	96.86	98.60	97.69
Min Standard	98.00	98.00	98.00	98.00	98.00	98.00	98.00	98.00	98.00	98.00	98.00	98.00	98.00

Kilometre figures are based on 4 weeks data