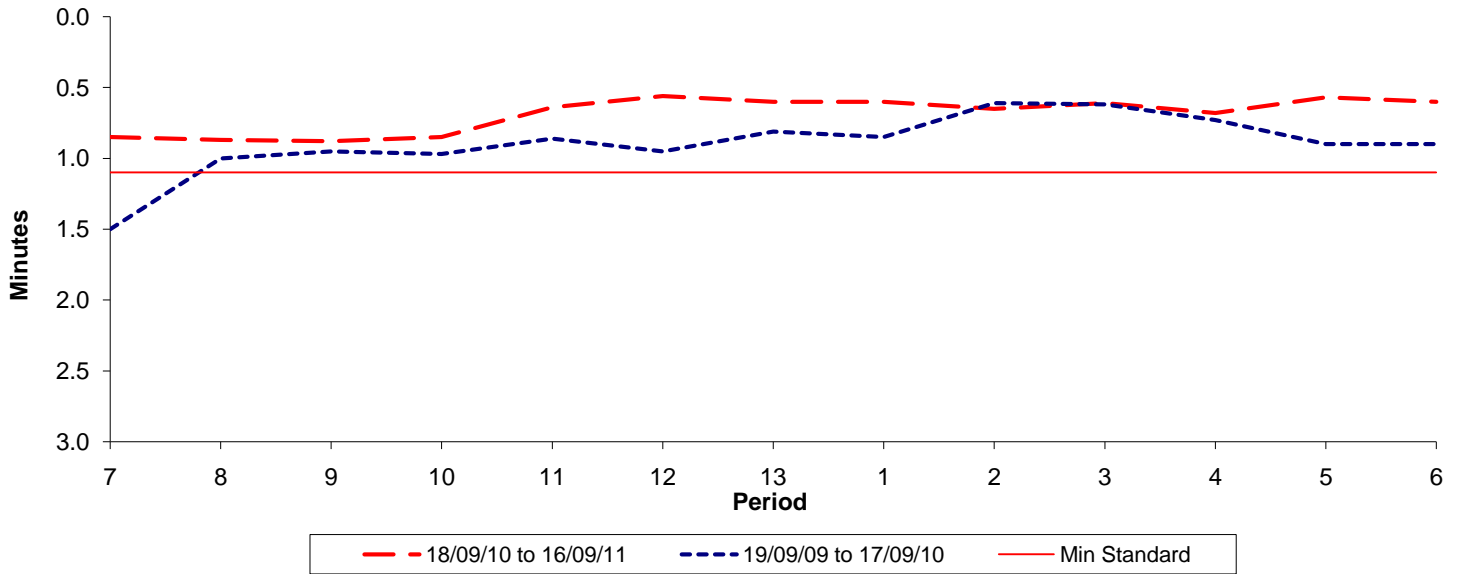




**Reliability Performance ( High Frequency )**

Excess Waiting Time (minutes)

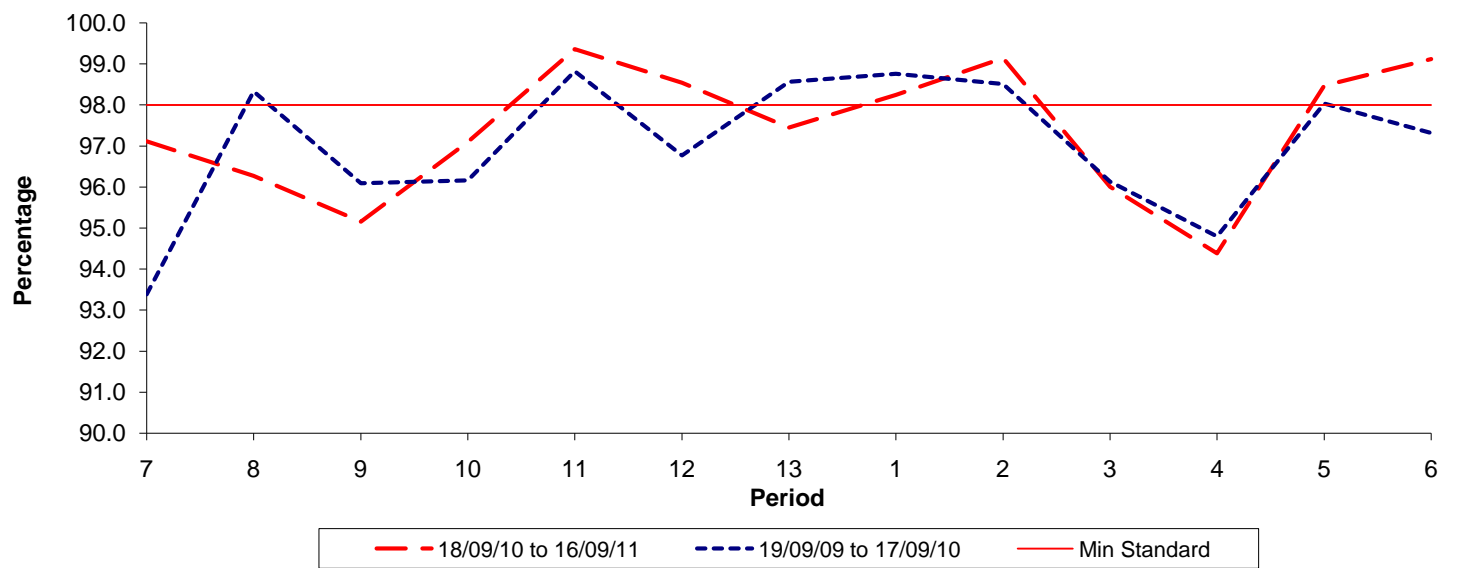


Date Range / Period	7	8	9	10	11	12	13	1	2	3	4	5	6
18/09/10 to 16/09/11	0.85	0.87	0.88	0.85	0.64	0.56	0.60	0.60	0.65	0.61	0.68	0.57	0.60
19/09/09 to 17/09/10	1.50	1.00	0.95	0.97	0.86	0.95	0.81	0.85	0.61	0.62	0.73	0.90	0.90
Min Standard	1.10	1.10	1.10	1.10	1.10	1.10	1.10	1.10	1.10	1.10	1.10	1.10	1.10

Excess Waiting Time figures are based on 12 weeks data

**Kilometre Performance**

% Kilometres Operated



Date Range / Period	7	8	9	10	11	12	13	1	2	3	4	5	6
18/09/10 to 16/09/11	97.11	96.27	95.15	97.10	99.36	98.54	97.45	98.24	99.14	96.00	94.38	98.47	99.12
19/09/09 to 17/09/10	93.38	98.33	96.09	96.16	98.82	96.77	98.56	98.76	98.51	96.13	94.79	98.03	97.31
Min Standard	98.00	98.00	98.00	98.00	98.00	98.00	98.00	98.00	98.00	98.00	98.00	98.00	98.00

Kilometre figures are based on 4 weeks data