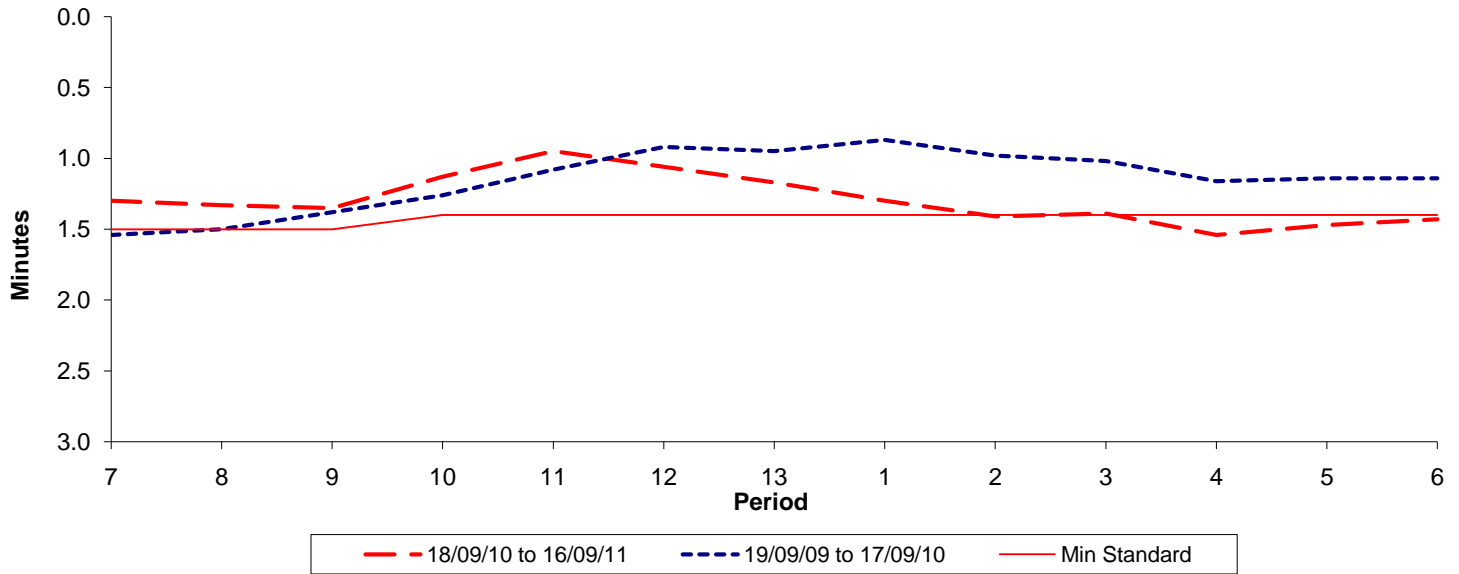




Reliability Performance (High Frequency)

Excess Waiting Time (minutes)

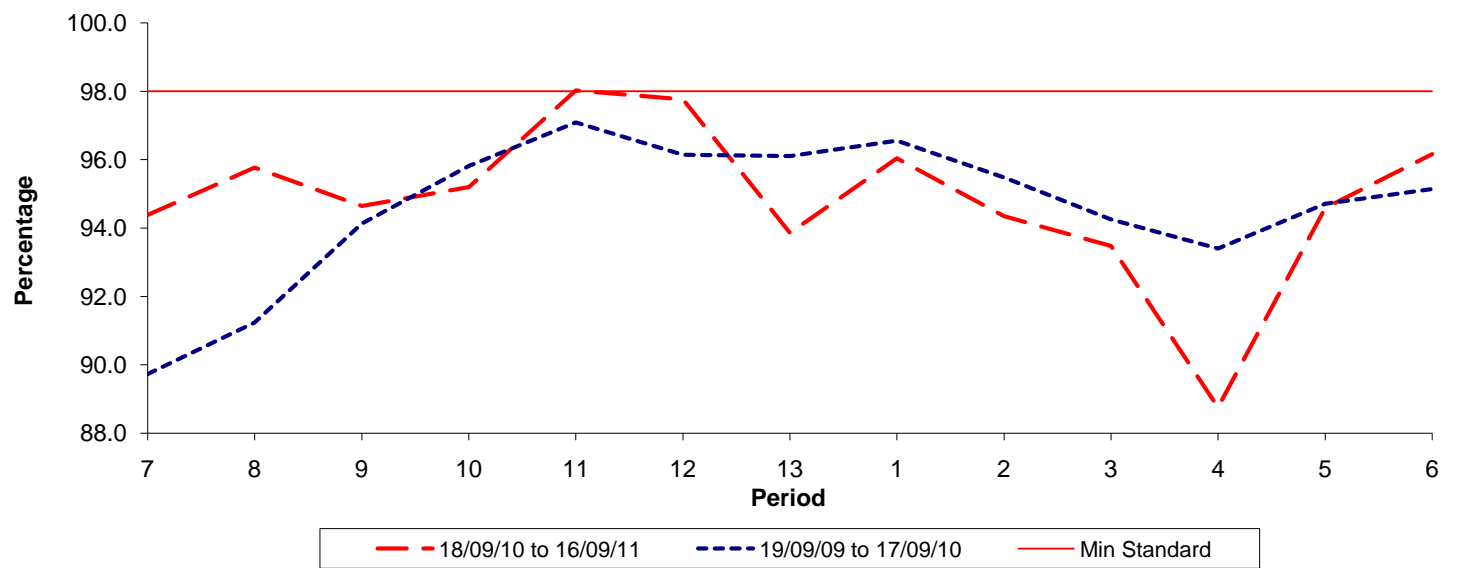


Date Range / Period	7	8	9	10	11	12	13	1	2	3	4	5	6
18/09/10 to 16/09/11	1.30	1.33	1.35	1.13	0.95	1.06	1.17	1.30	1.41	1.39	1.54	1.47	1.43
19/09/09 to 17/09/10	1.54	1.50	1.38	1.26	1.08	0.92	0.95	0.87	0.98	1.02	1.16	1.14	1.14
Min Standard	1.50	1.50	1.50	1.40	1.40	1.40	1.40	1.40	1.40	1.40	1.40	1.40	1.40

Excess Waiting Time figures are based on 12 weeks data

Kilometre Performance

% Kilometres Operated



Date Range / Period	7	8	9	10	11	12	13	1	2	3	4	5	6
18/09/10 to 16/09/11	94.38	95.77	94.65	95.20	98.03	97.77	93.86	96.04	94.35	93.47	88.75	94.59	96.16
19/09/09 to 17/09/10	89.73	91.24	94.13	95.82	97.09	96.14	96.11	96.56	95.48	94.25	93.40	94.71	95.14
Min Standard	98.00	98.00	98.00	98.00	98.00	98.00	98.00	98.00	98.00	98.00	98.00	98.00	98.00

Kilometre figures are based on 4 weeks data