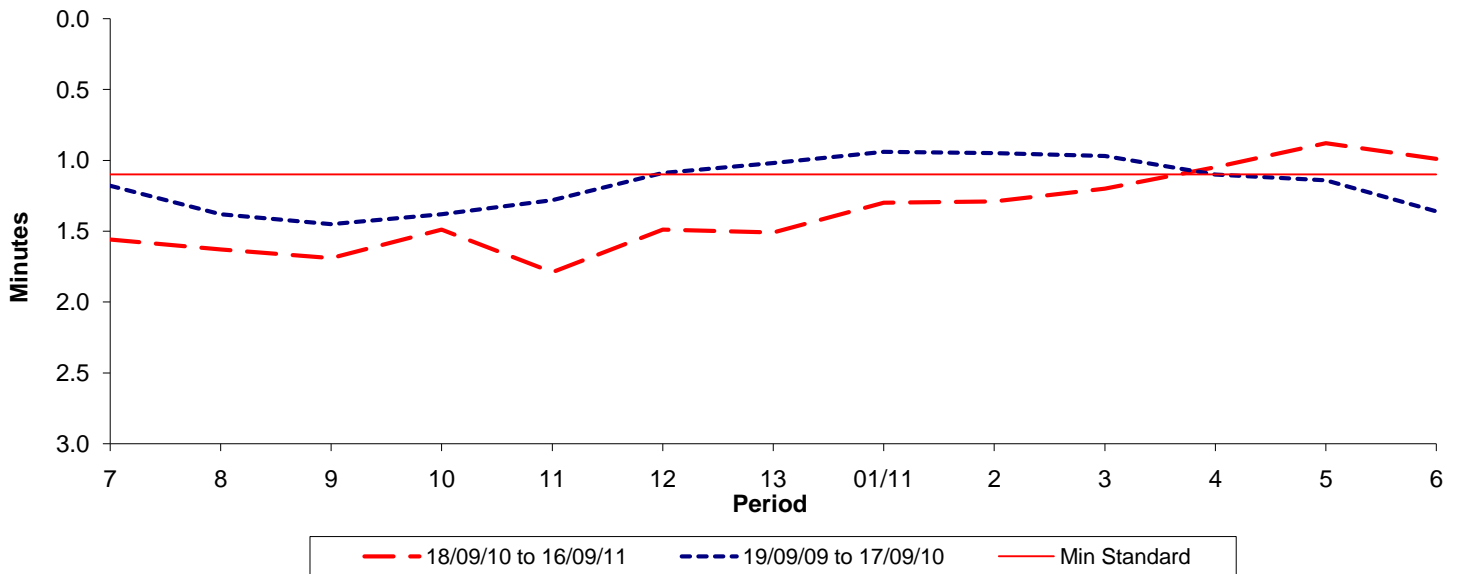


Route 157

Reliability Performance (High Frequency)

Excess Waiting Time (minutes)

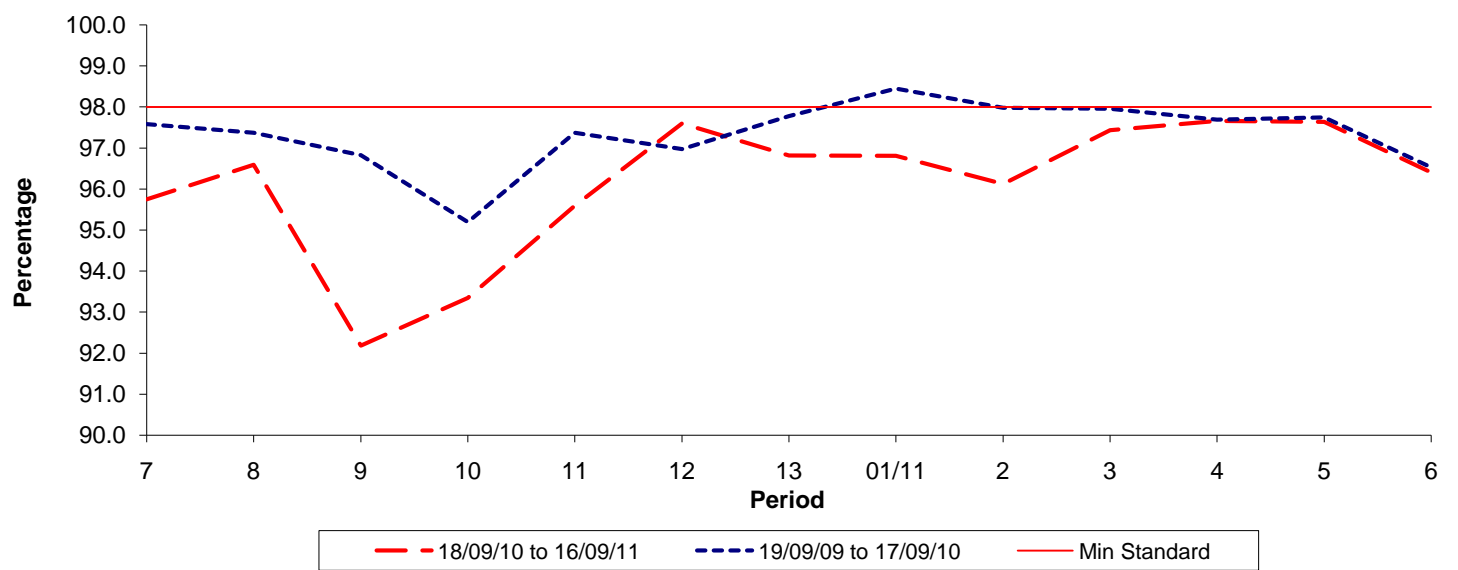


Date Range / Period	7	8	9	10	11	12	13	01/11	2	3	4	5	6
18/09/10 to 16/09/11	1.56	1.63	1.69	1.49	1.79	1.49	1.51	1.30	1.29	1.20	1.05	0.88	0.99
19/09/09 to 17/09/10	1.18	1.38	1.45	1.38	1.28	1.09	1.02	0.94	0.95	0.97	1.10	1.14	1.36
Min Standard	1.10	1.10	1.10	1.10	1.10	1.10	1.10	1.10	1.10	1.10	1.10	1.10	1.10

Excess Waiting Time figures are based on 12 weeks data

Kilometre Performance

% Kilometres Operated



Date Range / Period	7	8	9	10	11	12	13	01/11	2	3	4	5	6
18/09/10 to 16/09/11	95.75	96.59	92.18	93.34	95.59	97.60	96.82	96.81	96.12	97.43	97.66	97.64	96.40
19/09/09 to 17/09/10	97.58	97.37	96.82	95.19	97.37	96.97	97.78	98.45	97.98	97.96	97.69	97.75	96.53
Min Standard	98.00	98.00	98.00	98.00	98.00	98.00	98.00	98.00	98.00	98.00	98.00	98.00	98.00

Kilometre figures are based on 4 weeks data