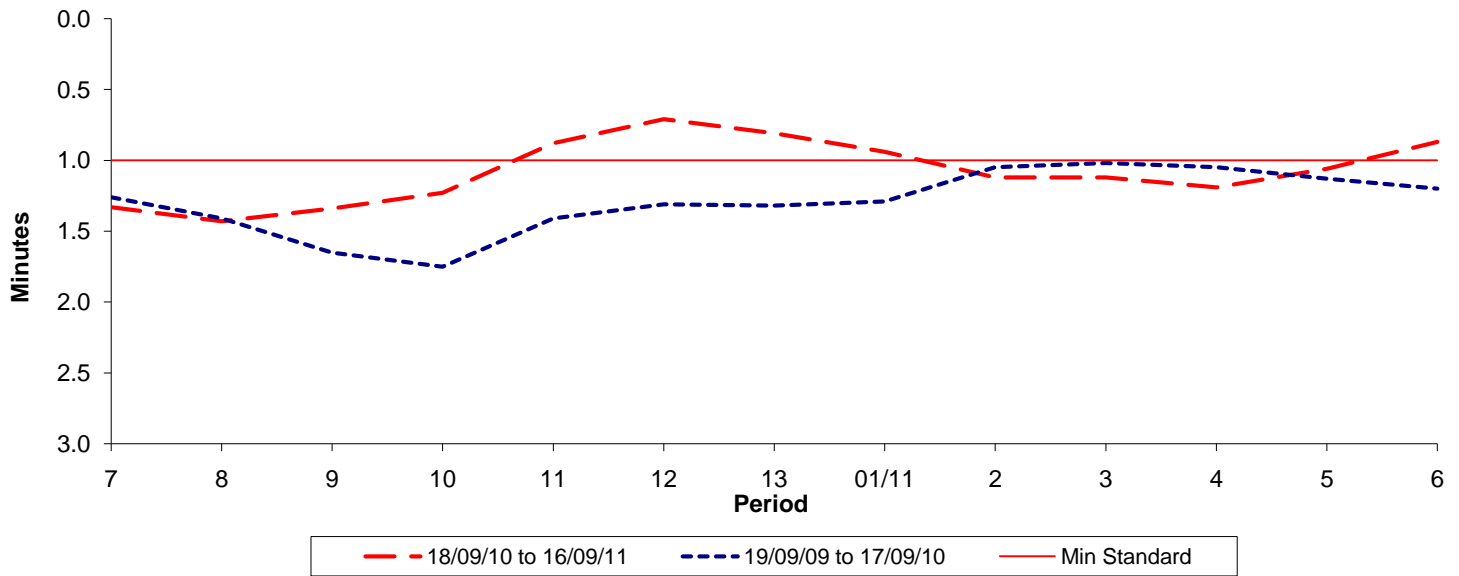




Reliability Performance (High Frequency)

Excess Waiting Time (minutes)

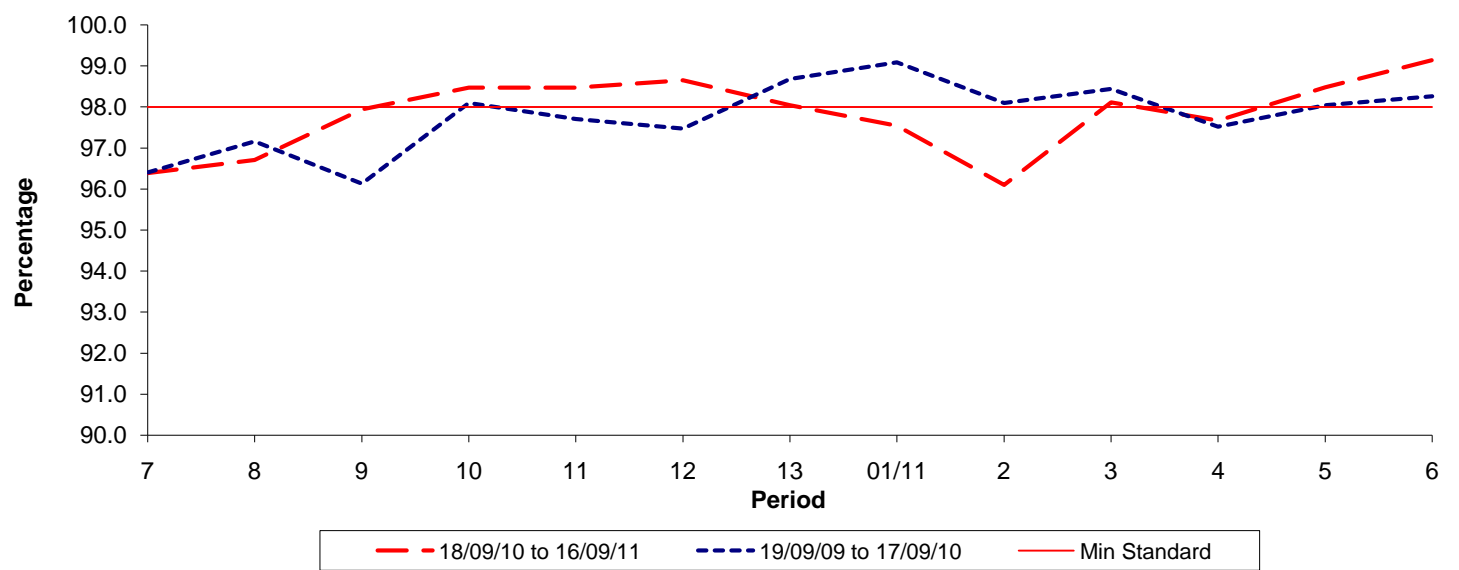


Date Range / Period	7	8	9	10	11	12	13	01/11	2	3	4	5	6
18/09/10 to 16/09/11	1.33	1.43	1.34	1.23	0.88	0.71	0.81	0.94	1.12	1.12	1.19	1.06	0.87
19/09/09 to 17/09/10	1.26	1.41	1.65	1.75	1.41	1.31	1.32	1.29	1.05	1.02	1.05	1.13	1.20
Min Standard	1.00	1.00	1.00	1.00	1.00	1.00	1.00	1.00	1.00	1.00	1.00	1.00	1.00

Excess Waiting Time figures are based on 12 weeks data

Kilometre Performance

% Kilometres Operated



Date Range / Period	7	8	9	10	11	12	13	01/11	2	3	4	5	6
18/09/10 to 16/09/11	96.39	96.71	97.94	98.47	98.47	98.65	98.04	97.54	96.10	98.11	97.67	98.48	99.14
19/09/09 to 17/09/10	96.40	97.16	96.13	98.10	97.71	97.47	98.68	99.09	98.10	98.44	97.52	98.04	98.26
Min Standard	98.00	98.00	98.00	98.00	98.00	98.00	98.00	98.00	98.00	98.00	98.00	98.00	98.00

Kilometre figures are based on 4 weeks data