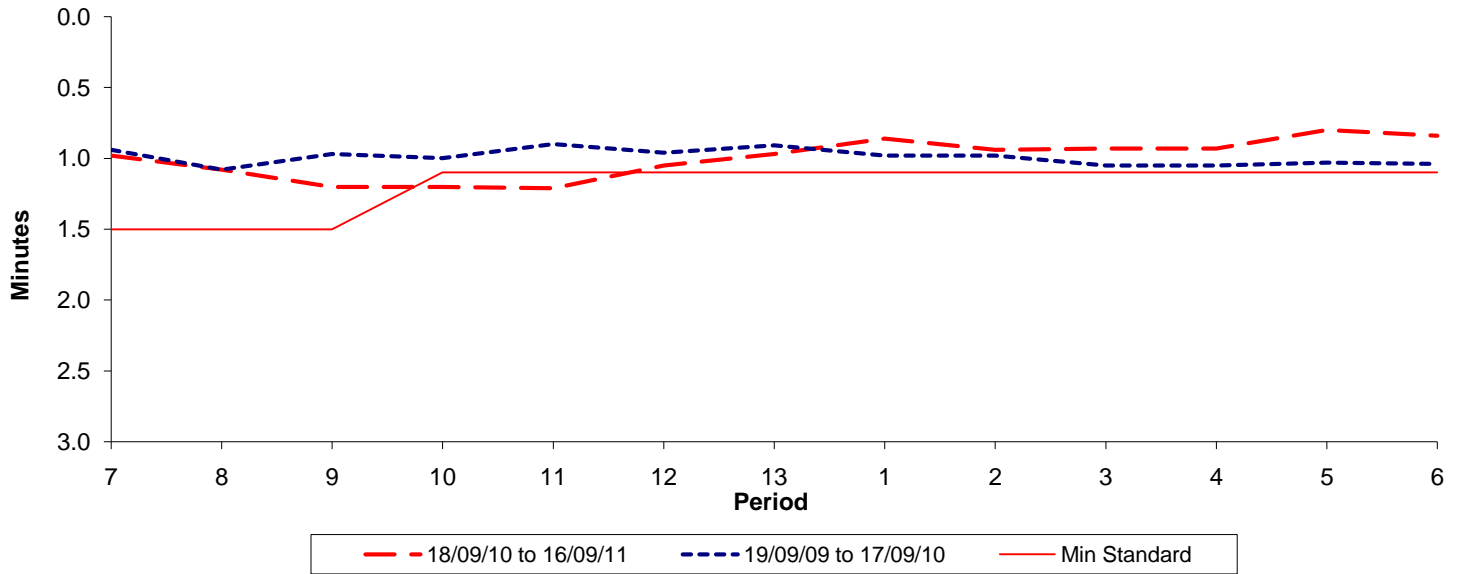




Reliability Performance (High Frequency)

Excess Waiting Time (minutes)

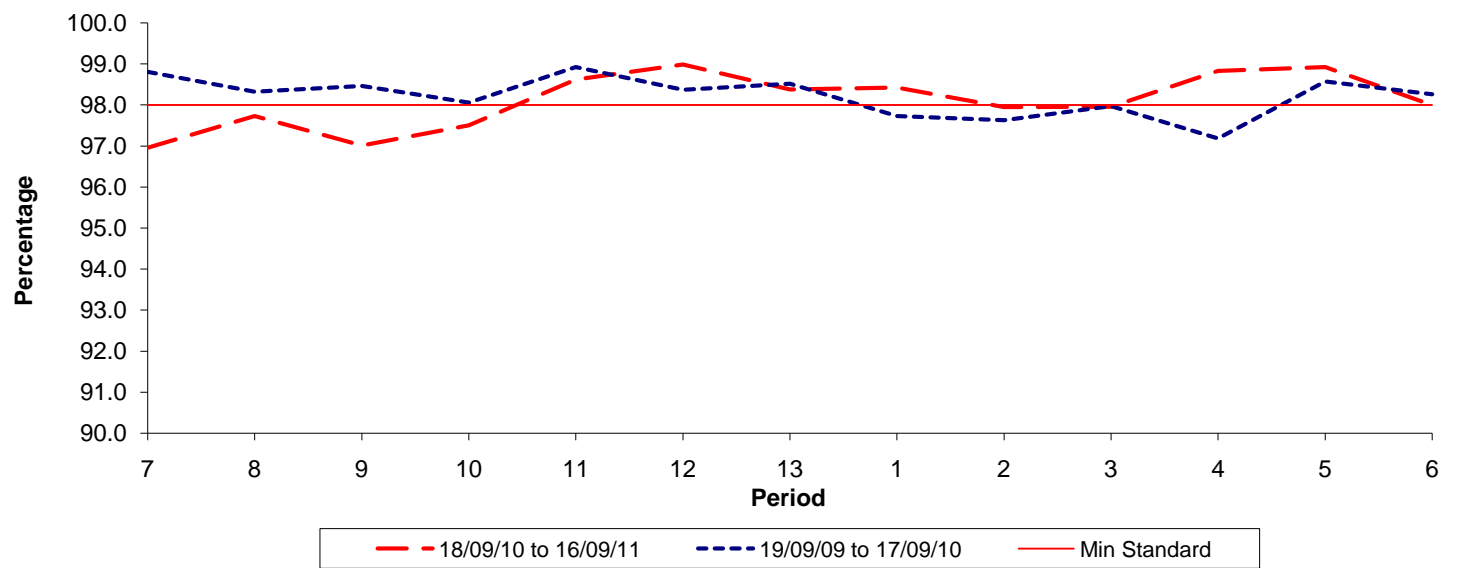


Date Range / Period	7	8	9	10	11	12	13	1	2	3	4	5	6
18/09/10 to 16/09/11	0.98	1.08	1.20	1.20	1.21	1.05	0.97	0.86	0.94	0.93	0.93	0.80	0.84
19/09/09 to 17/09/10	0.94	1.08	0.97	1.00	0.90	0.96	0.91	0.98	0.98	1.05	1.05	1.03	1.04
Min Standard	1.50	1.50	1.50	1.10	1.10	1.10	1.10	1.10	1.10	1.10	1.10	1.10	1.10

Excess Waiting Time figures are based on 12 weeks data

Kilometre Performance

% Kilometres Operated



Date Range / Period	7	8	9	10	11	12	13	1	2	3	4	5	6
18/09/10 to 16/09/11	96.96	97.73	97.01	97.50	98.62	98.99	98.38	98.43	97.95	97.96	98.83	98.93	98.00
19/09/09 to 17/09/10	98.80	98.32	98.46	98.06	98.92	98.37	98.52	97.73	97.63	97.97	97.19	98.58	98.27
Min Standard	98.00	98.00	98.00	98.00	98.00	98.00	98.00	98.00	98.00	98.00	98.00	98.00	98.00

Kilometre figures are based on 4 weeks data