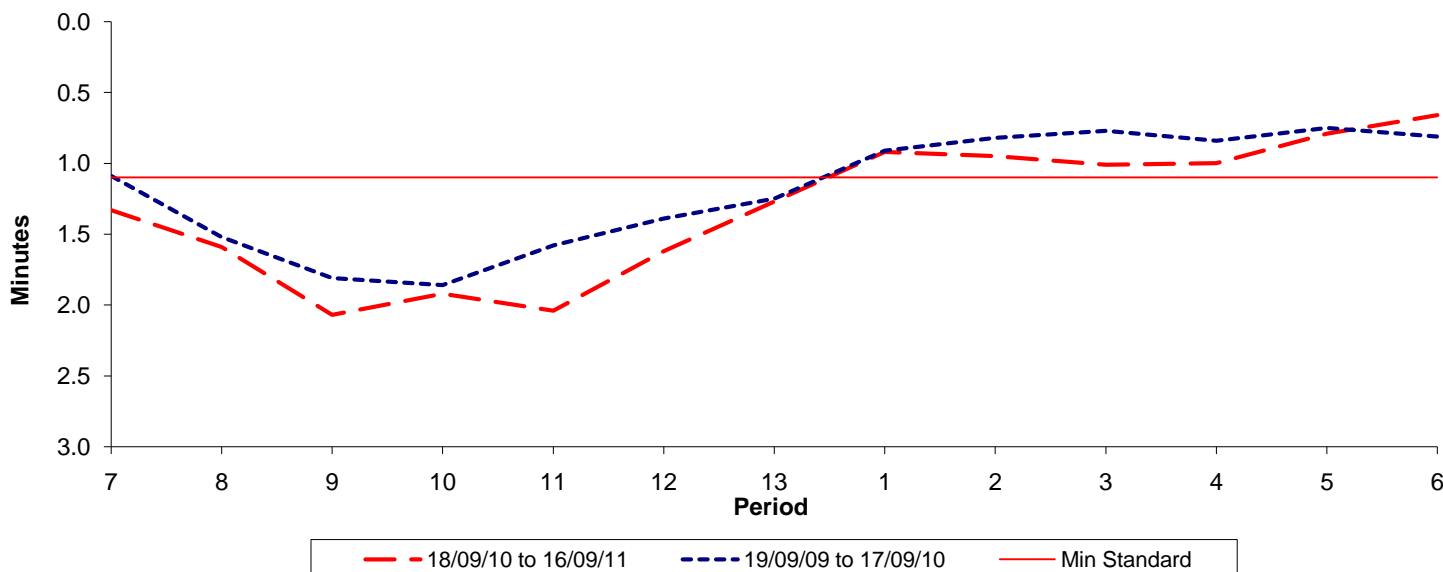




**Reliability Performance ( High Frequency )**

**Excess Waiting Time (minutes)**

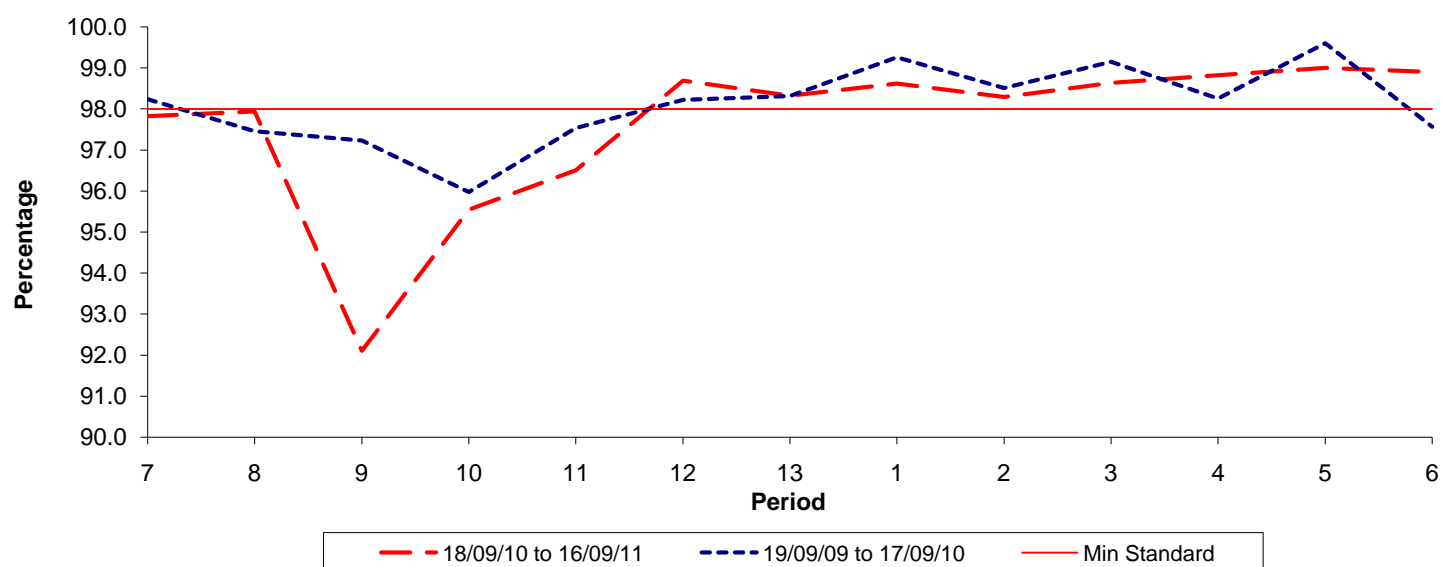


Date Range / Period	7	8	9	10	11	12	13	1	2	3	4	5	6
18/09/10 to 16/09/11	1.33	1.59	2.07	1.92	2.04	1.62	1.27	0.92	0.95	1.01	1.00	0.79	0.66
19/09/09 to 17/09/10	1.09	1.52	1.81	1.86	1.58	1.39	1.25	0.91	0.82	0.77	0.84	0.75	0.81
Min Standard	1.10	1.10	1.10	1.10	1.10	1.10	1.10	1.10	1.10	1.10	1.10	1.10	1.10

Excess Waiting Time figures are based on 12 weeks data

**Kilometre Performance**

**% Kilometres Operated**



Date Range / Period	7	8	9	10	11	12	13	1	2	3	4	5	6
18/09/10 to 16/09/11	97.82	97.94	92.10	95.54	96.50	98.69	98.32	98.62	98.29	98.63	98.82	99.00	98.90
19/09/09 to 17/09/10	98.24	97.46	97.23	95.97	97.53	98.22	98.31	99.26	98.51	99.15	98.25	99.61	97.57
Min Standard	98.00	98.00	98.00	98.00	98.00	98.00	98.00	98.00	98.00	98.00	98.00	98.00	98.00

Kilometre figures are based on 4 weeks data