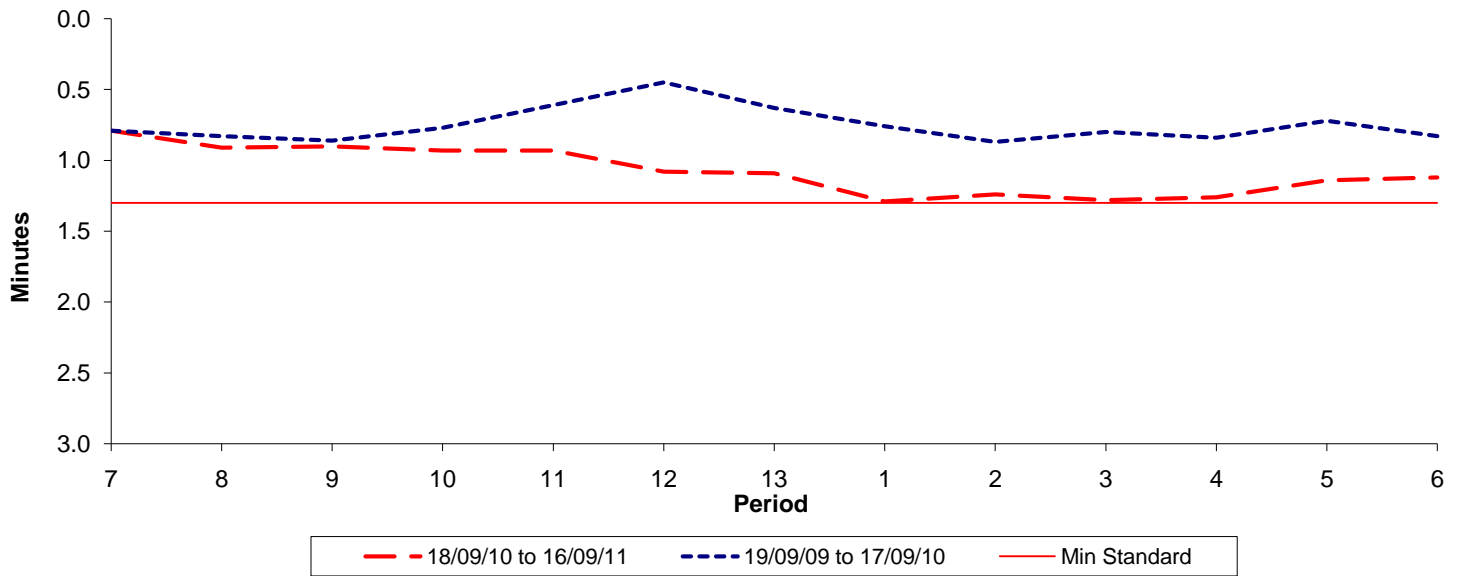




Reliability Performance (High Frequency)

Excess Waiting Time (minutes)

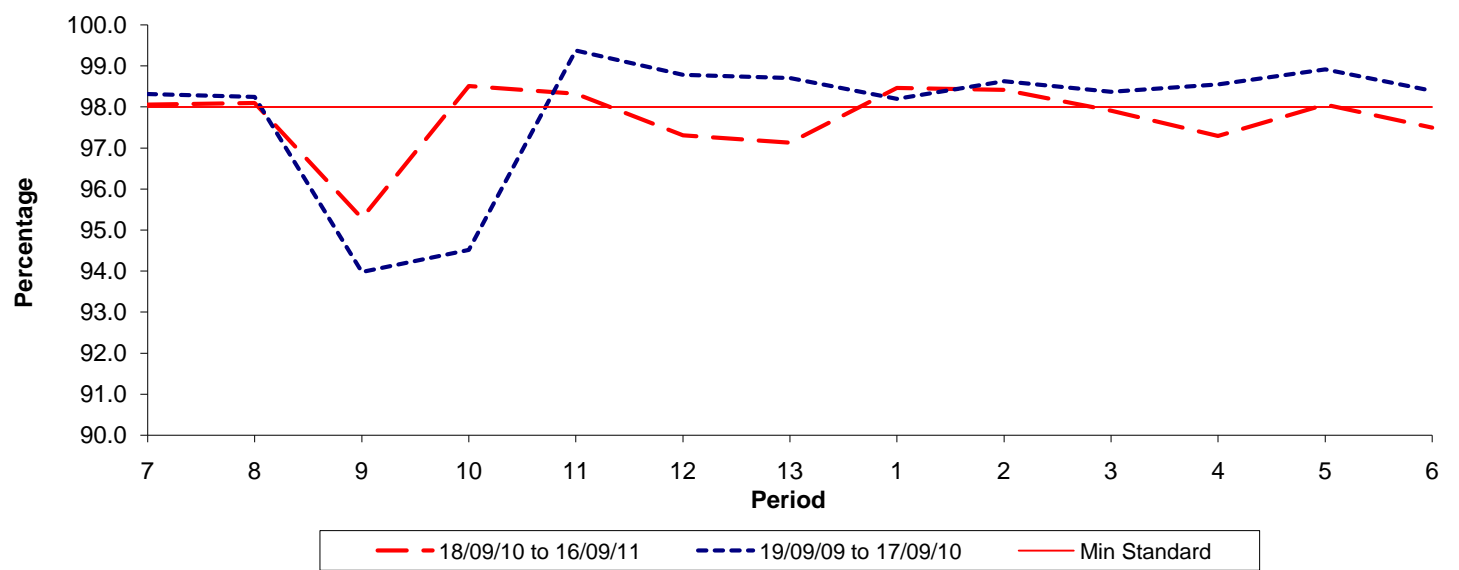


Date Range / Period	7	8	9	10	11	12	13	1	2	3	4	5	6
18/09/10 to 16/09/11	0.79	0.91	0.90	0.93	0.93	1.08	1.09	1.29	1.24	1.28	1.26	1.14	1.12
19/09/09 to 17/09/10	0.79	0.83	0.86	0.77	0.61	0.45	0.63	0.76	0.87	0.80	0.84	0.72	0.83
Min Standard	1.30	1.30	1.30	1.30	1.30	1.30	1.30	1.30	1.30	1.30	1.30	1.30	1.30

Excess Waiting Time figures are based on 12 weeks data

Kilometre Performance

% Kilometres Operated



Date Range / Period	7	8	9	10	11	12	13	1	2	3	4	5	6
18/09/10 to 16/09/11	98.06	98.10	95.29	98.51	98.32	97.31	97.13	98.46	98.42	97.91	97.29	98.06	97.50
19/09/09 to 17/09/10	98.32	98.25	93.98	94.52	99.38	98.79	98.71	98.20	98.63	98.37	98.55	98.92	98.40
Min Standard	98.00	98.00	98.00	98.00	98.00	98.00	98.00	98.00	98.00	98.00	98.00	98.00	98.00

Kilometre figures are based on 4 weeks data