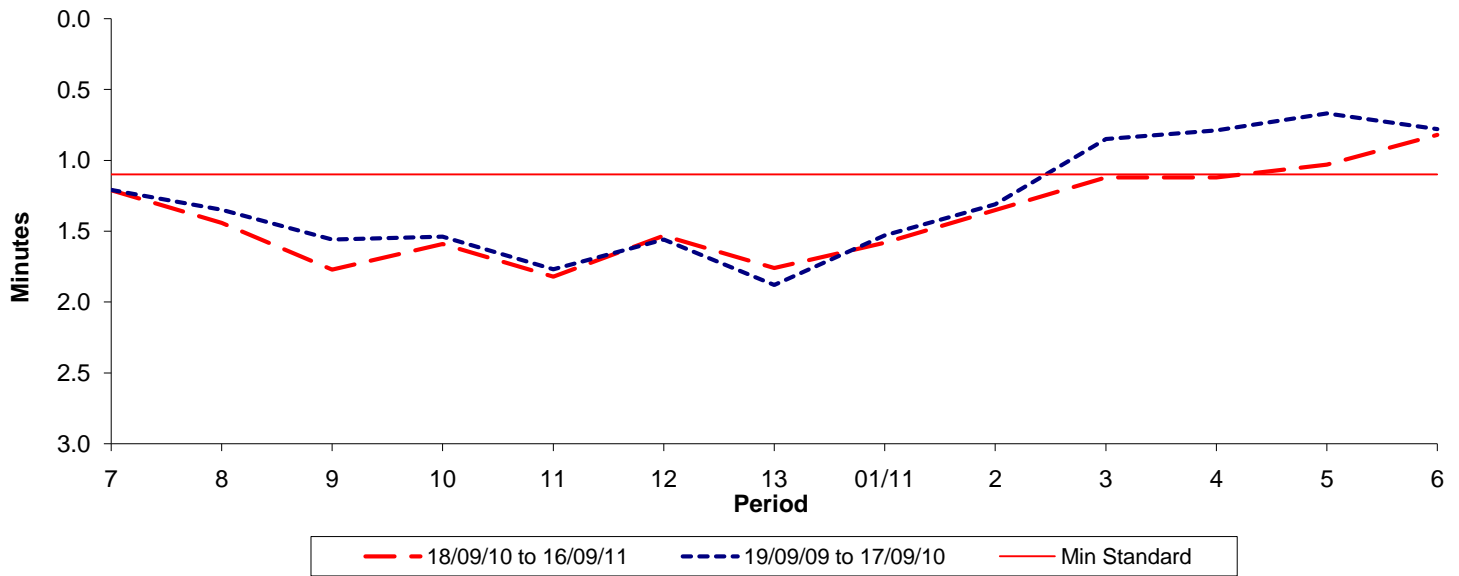




Reliability Performance (High Frequency)

Excess Waiting Time (minutes)

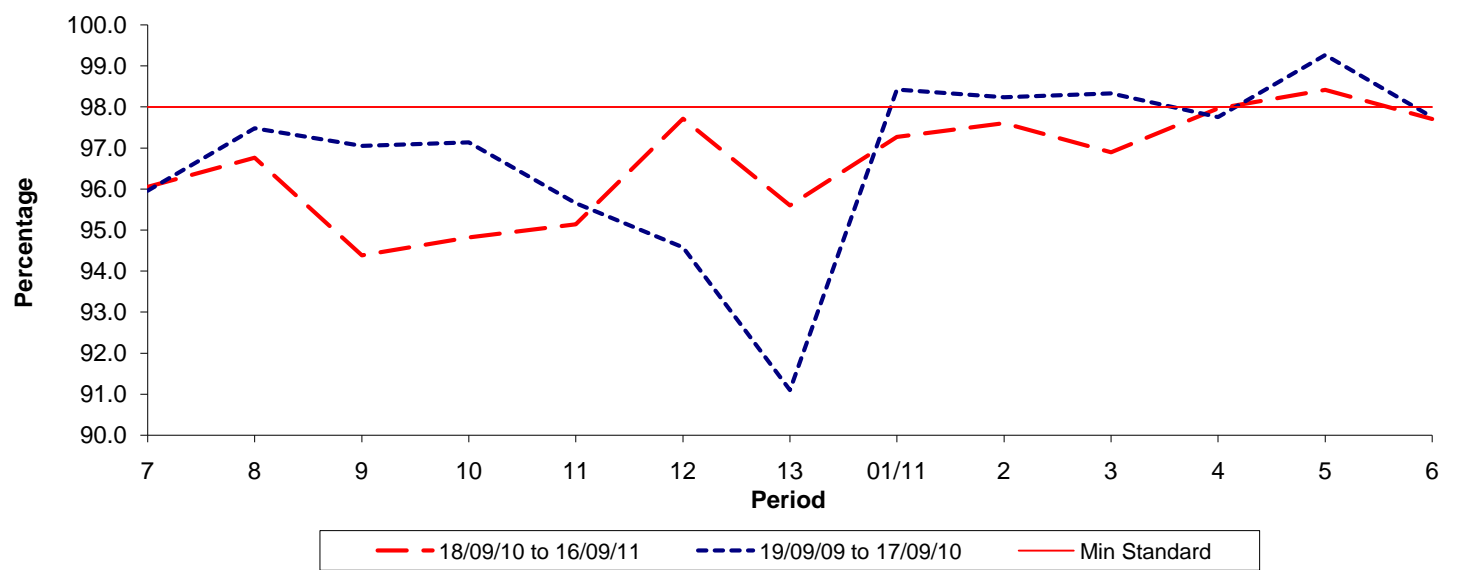


Date Range / Period	7	8	9	10	11	12	13	01/11	2	3	4	5	6
18/09/10 to 16/09/11	1.21	1.44	1.77	1.59	1.82	1.53	1.76	1.58	1.35	1.12	1.12	1.03	0.82
19/09/09 to 17/09/10	1.21	1.35	1.56	1.54	1.77	1.56	1.88	1.53	1.31	0.85	0.79	0.67	0.78
Min Standard	1.10	1.10	1.10	1.10	1.10	1.10	1.10	1.10	1.10	1.10	1.10	1.10	1.10

Excess Waiting Time figures are based on 12 weeks data

Kilometre Performance

% Kilometres Operated



Date Range / Period	7	8	9	10	11	12	13	01/11	2	3	4	5	6
18/09/10 to 16/09/11	96.05	96.76	94.38	94.82	95.14	97.72	95.60	97.27	97.61	96.90	97.97	98.42	97.71
19/09/09 to 17/09/10	95.96	97.48	97.05	97.14	95.66	94.58	91.10	98.43	98.24	98.33	97.76	99.27	97.76
Min Standard	98.00	98.00	98.00	98.00	98.00	98.00	98.00	98.00	98.00	98.00	98.00	98.00	98.00

Kilometre figures are based on 4 weeks data