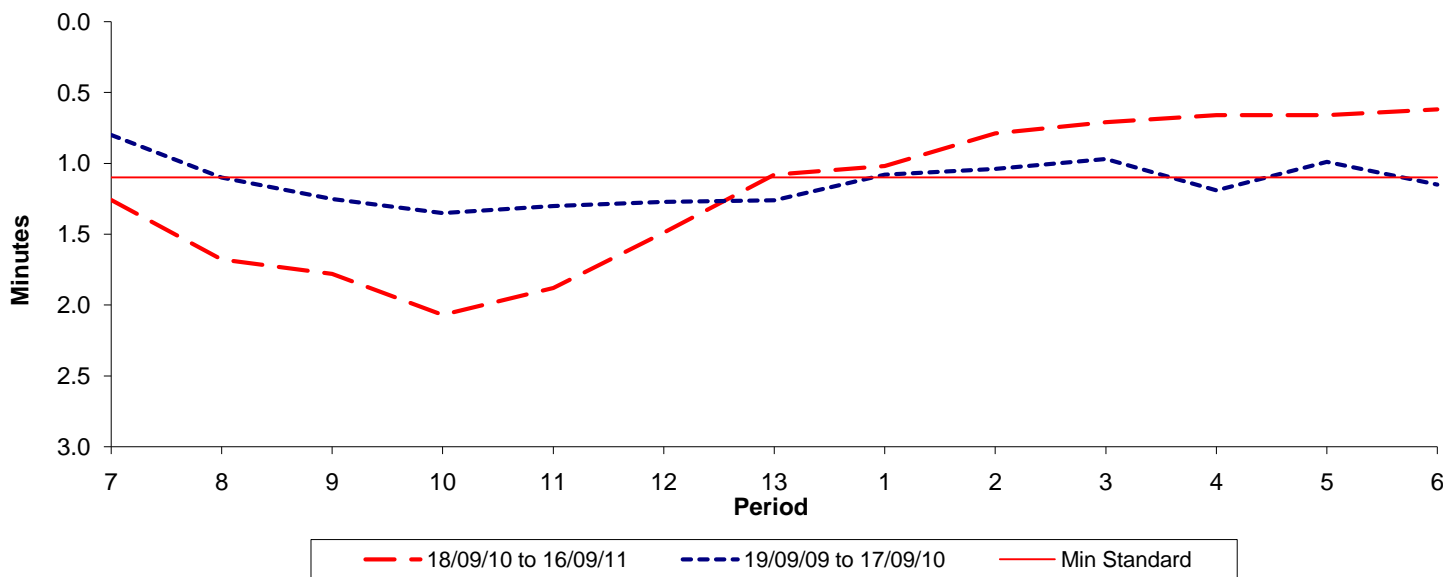




Reliability Performance (High Frequency)

Excess Waiting Time (minutes)

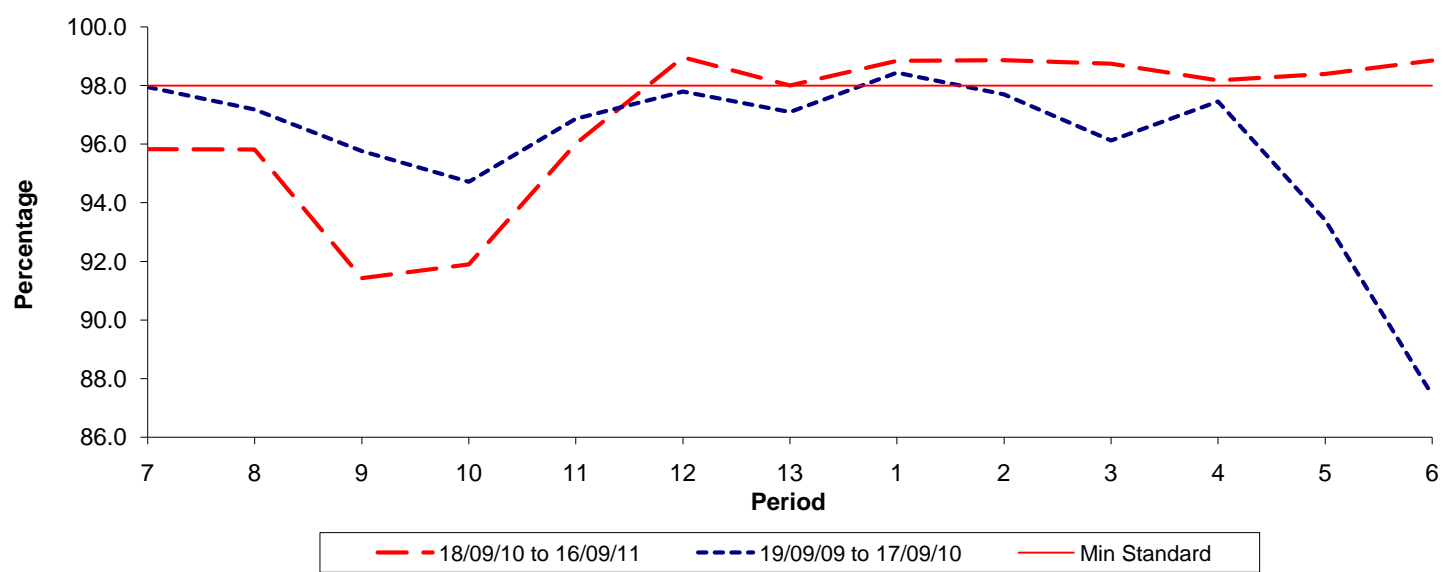


Date Range / Period	7	8	9	10	11	12	13	1	2	3	4	5	6
18/09/10 to 16/09/11	1.26	1.68	1.78	2.07	1.88	1.49	1.08	1.02	0.79	0.71	0.66	0.66	0.62
19/09/09 to 17/09/10	0.80	1.10	1.25	1.35	1.30	1.27	1.26	1.08	1.04	0.97	1.19	0.99	1.15
Min Standard	1.10	1.10	1.10	1.10	1.10	1.10	1.10	1.10	1.10	1.10	1.10	1.10	1.10

Excess Waiting Time figures are based on 12 weeks data

Kilometre Performance

% Kilometres Operated



Date Range / Period	7	8	9	10	11	12	13	1	2	3	4	5	6
18/09/10 to 16/09/11	95.82	95.81	91.42	91.89	96.02	98.96	98.00	98.84	98.86	98.74	98.17	98.39	98.85
19/09/09 to 17/09/10	97.95	97.19	95.76	94.72	96.87	97.80	97.10	98.44	97.70	96.13	97.46	93.40	87.44
Min Standard	98.00	98.00	98.00	98.00	98.00	98.00	98.00	98.00	98.00	98.00	98.00	98.00	98.00

Kilometre figures are based on 4 weeks data