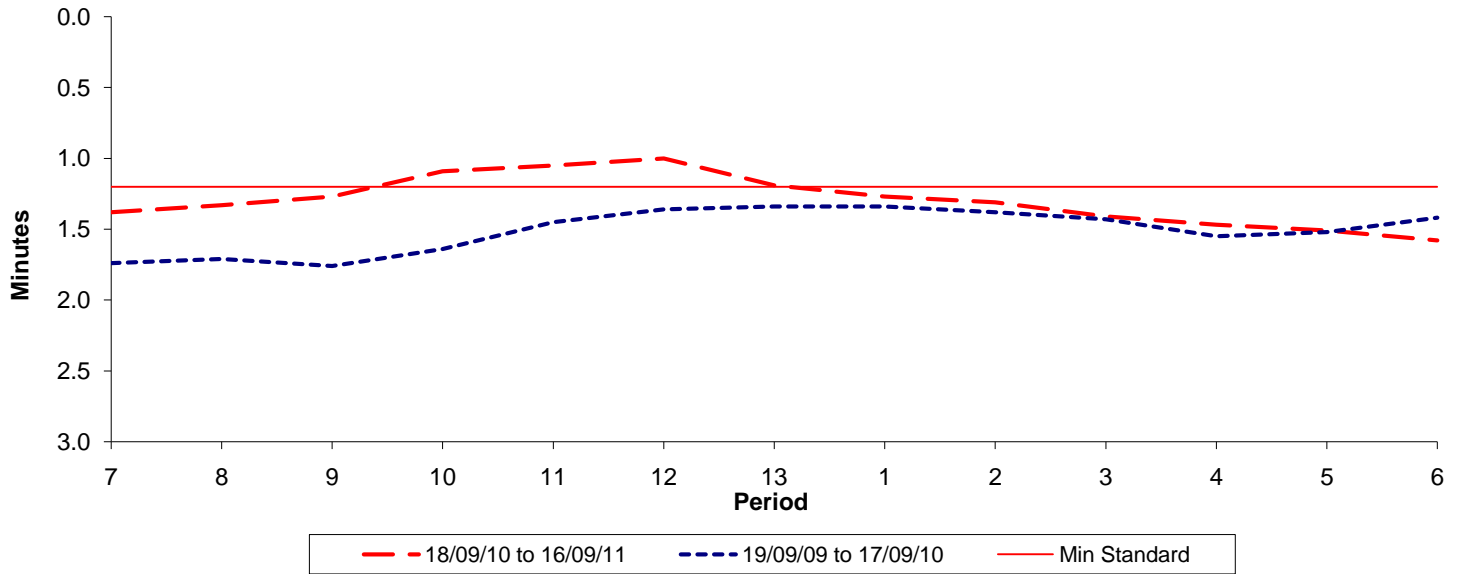




Reliability Performance (High Frequency)

Excess Waiting Time (minutes)

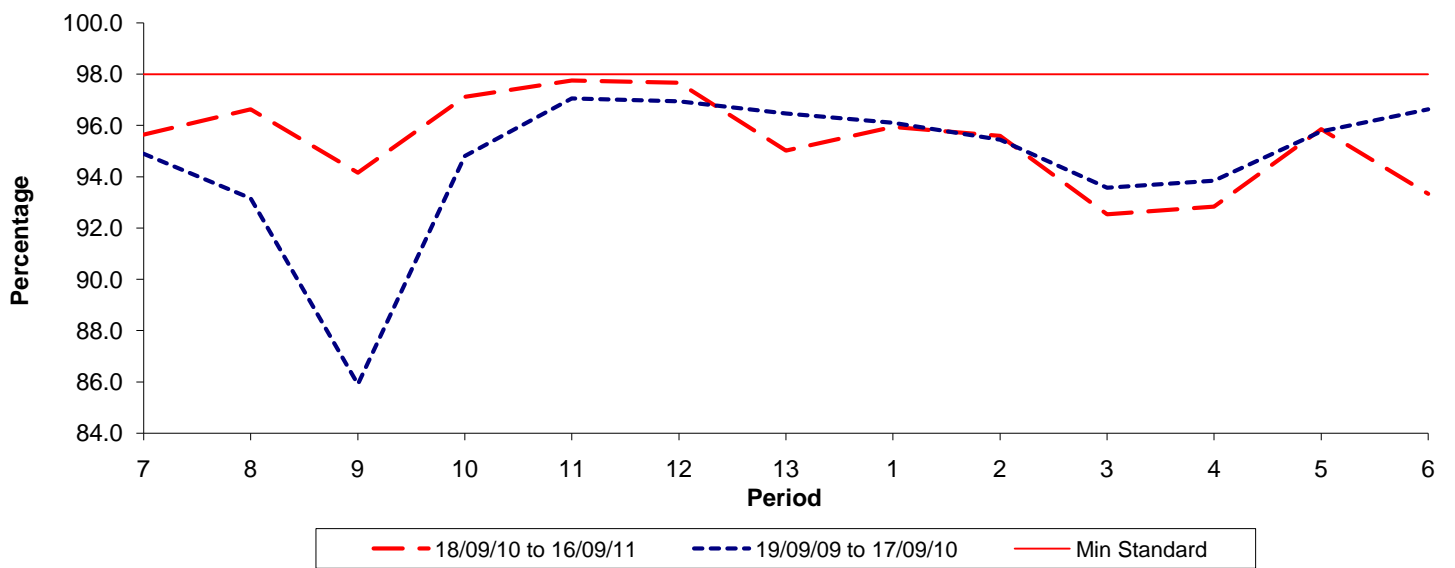


Date Range / Period	7	8	9	10	11	12	13	1	2	3	4	5	6
18/09/10 to 16/09/11	1.38	1.33	1.27	1.09	1.05	1.00	1.19	1.27	1.31	1.41	1.47	1.51	1.58
19/09/09 to 17/09/10	1.74	1.71	1.76	1.64	1.45	1.36	1.34	1.34	1.38	1.43	1.55	1.52	1.42
Min Standard	1.20	1.20	1.20	1.20	1.20	1.20	1.20	1.20	1.20	1.20	1.20	1.20	1.20

Excess Waiting Time figures are based on 12 weeks data

Kilometre Performance

% Kilometres Operated



Date Range / Period	7	8	9	10	11	12	13	1	2	3	4	5	6
18/09/10 to 16/09/11	95.64	96.63	94.16	97.12	97.76	97.67	95.02	95.95	95.59	92.53	92.83	95.86	93.33
19/09/09 to 17/09/10	94.89	93.16	85.91	94.81	97.05	96.94	96.46	96.10	95.44	93.57	93.85	95.76	96.63
Min Standard	98.00	98.00	98.00	98.00	98.00	98.00	98.00	98.00	98.00	98.00	98.00	98.00	98.00

Kilometre figures are based on 4 weeks data