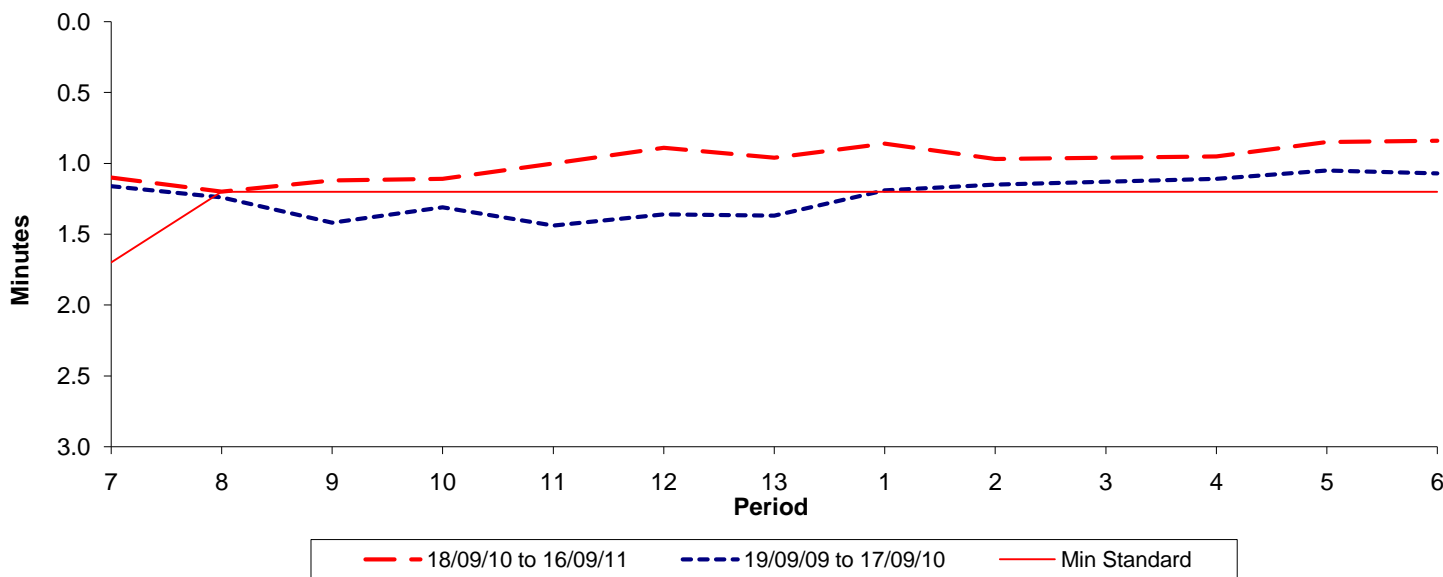




**Reliability Performance ( High Frequency )**

**Excess Waiting Time (minutes)**

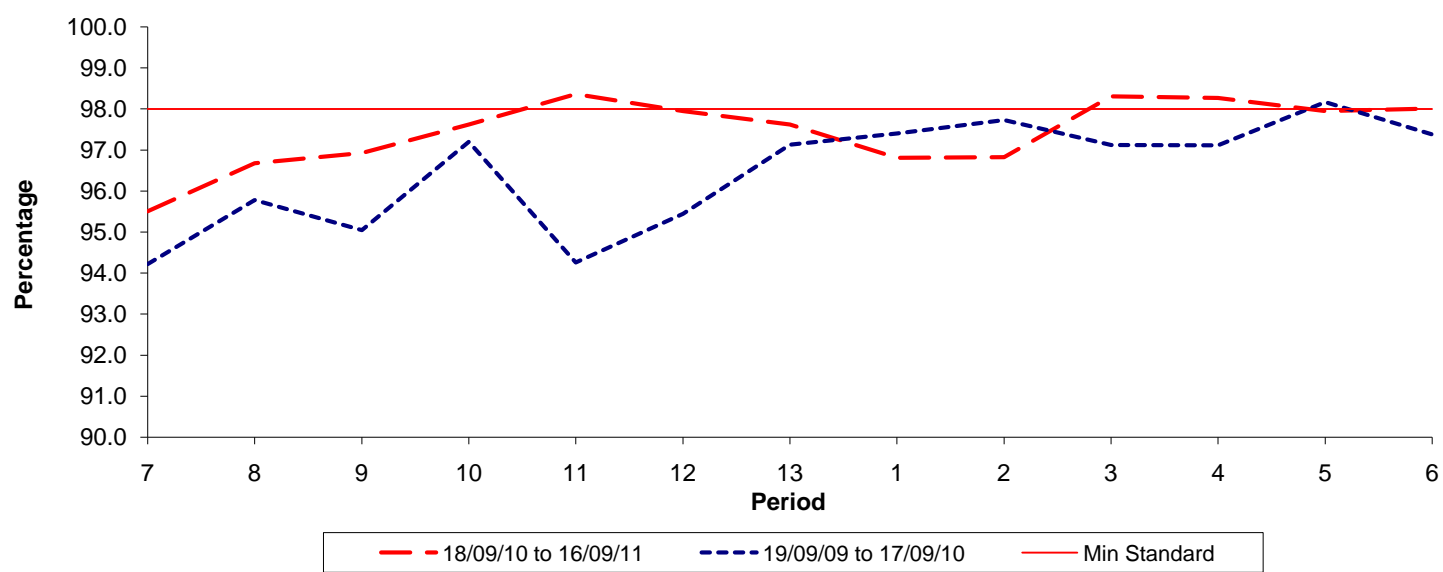


Date Range / Period	7	8	9	10	11	12	13	1	2	3	4	5	6
18/09/10 to 16/09/11	1.10	1.20	1.12	1.11	1.00	0.89	0.96	0.86	0.97	0.96	0.95	0.85	0.84
19/09/09 to 17/09/10	1.16	1.24	1.42	1.31	1.44	1.36	1.37	1.19	1.15	1.13	1.11	1.05	1.07
Min Standard	1.70	1.20	1.20	1.20	1.20	1.20	1.20	1.20	1.20	1.20	1.20	1.20	1.20

Excess Waiting Time figures are based on 12 weeks data

**Kilometre Performance**

**% Kilometres Operated**



Date Range / Period	7	8	9	10	11	12	13	1	2	3	4	5	6
18/09/10 to 16/09/11	95.51	96.68	96.93	97.63	98.36	97.95	97.62	96.81	96.83	98.31	98.27	97.95	98.01
19/09/09 to 17/09/10	94.21	95.78	95.04	97.20	94.26	95.44	97.13	97.41	97.73	97.12	97.11	98.17	97.38
Min Standard	98.00	98.00	98.00	98.00	98.00	98.00	98.00	98.00	98.00	98.00	98.00	98.00	98.00

Kilometre figures are based on 4 weeks data