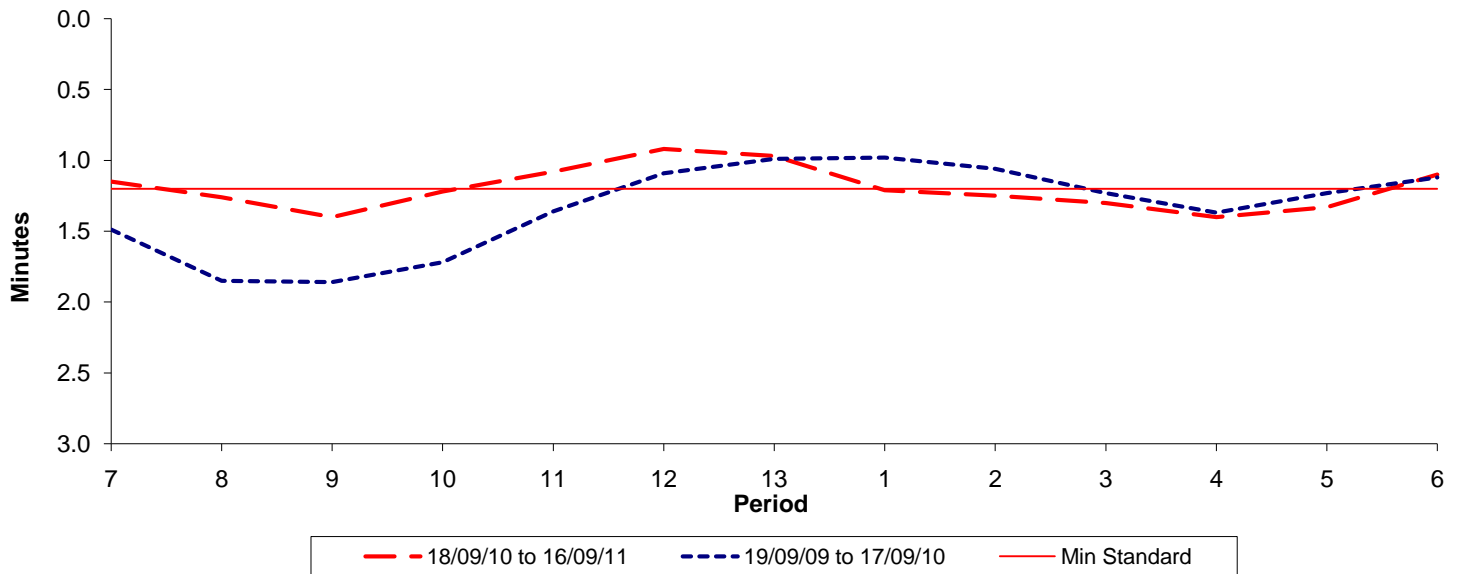




**Reliability Performance ( High Frequency )**

**Excess Waiting Time (minutes)**

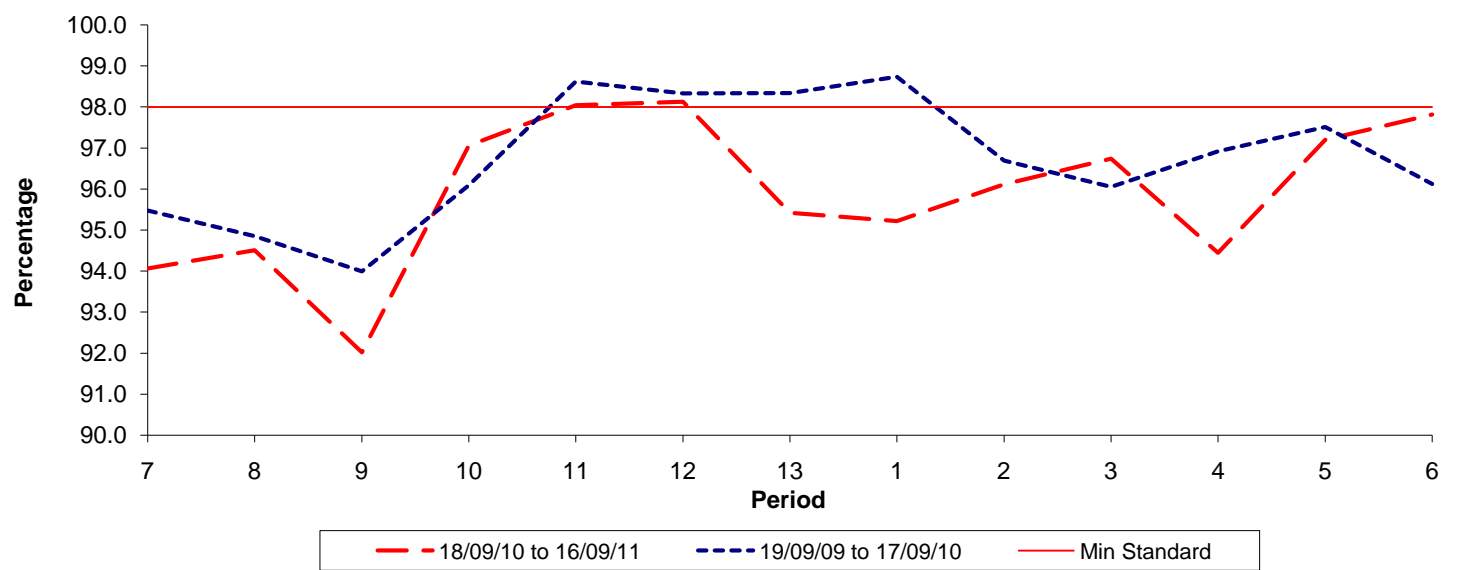


Date Range / Period	7	8	9	10	11	12	13	1	2	3	4	5	6
18/09/10 to 16/09/11	1.15	1.26	1.40	1.22	1.08	0.92	0.97	1.21	1.25	1.30	1.40	1.33	1.10
19/09/09 to 17/09/10	1.49	1.85	1.86	1.72	1.36	1.09	0.99	0.98	1.06	1.23	1.37	1.23	1.12
Min Standard	1.20	1.20	1.20	1.20	1.20	1.20	1.20	1.20	1.20	1.20	1.20	1.20	1.20

Excess Waiting Time figures are based on 12 weeks data

**Kilometre Performance**

**% Kilometres Operated**



Date Range / Period	7	8	9	10	11	12	13	1	2	3	4	5	6
18/09/10 to 16/09/11	94.07	94.51	92.02	97.06	98.05	98.13	95.42	95.22	96.12	96.74	94.45	97.20	97.82
19/09/09 to 17/09/10	95.47	94.85	93.99	96.09	98.62	98.33	98.34	98.73	96.69	96.05	96.92	97.51	96.12
Min Standard	98.00	98.00	98.00	98.00	98.00	98.00	98.00	98.00	98.00	98.00	98.00	98.00	98.00

Kilometre figures are based on 4 weeks data