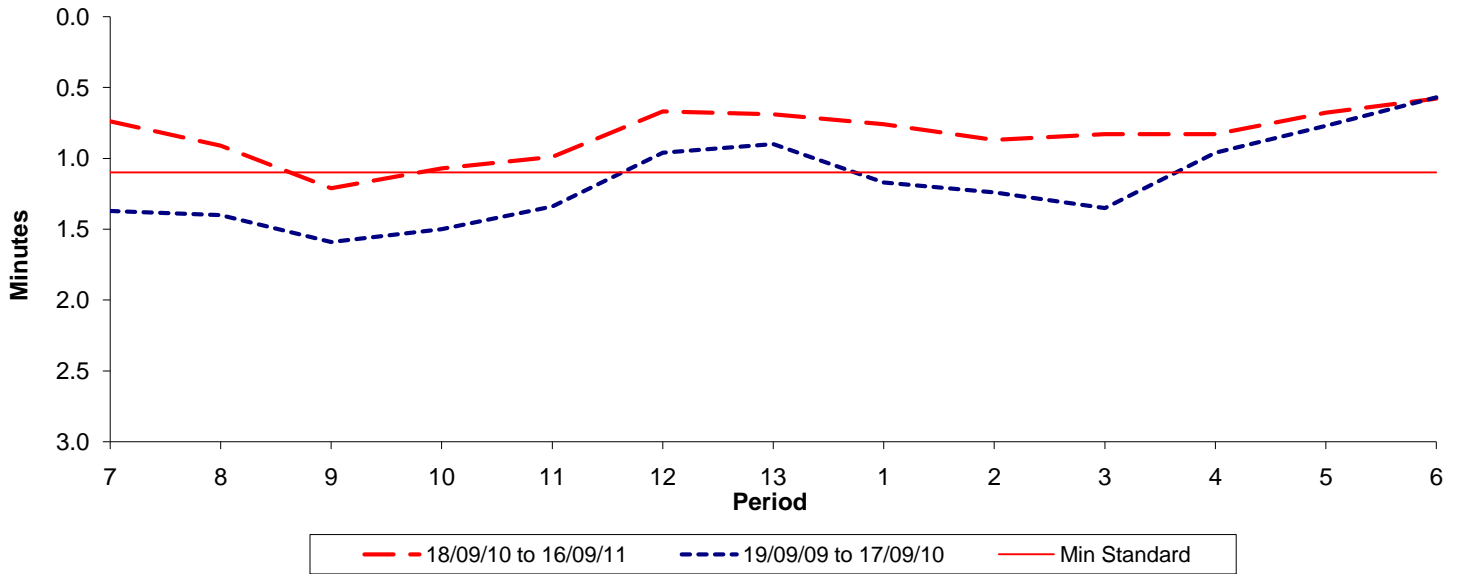




Reliability Performance (High Frequency)

Excess Waiting Time (minutes)

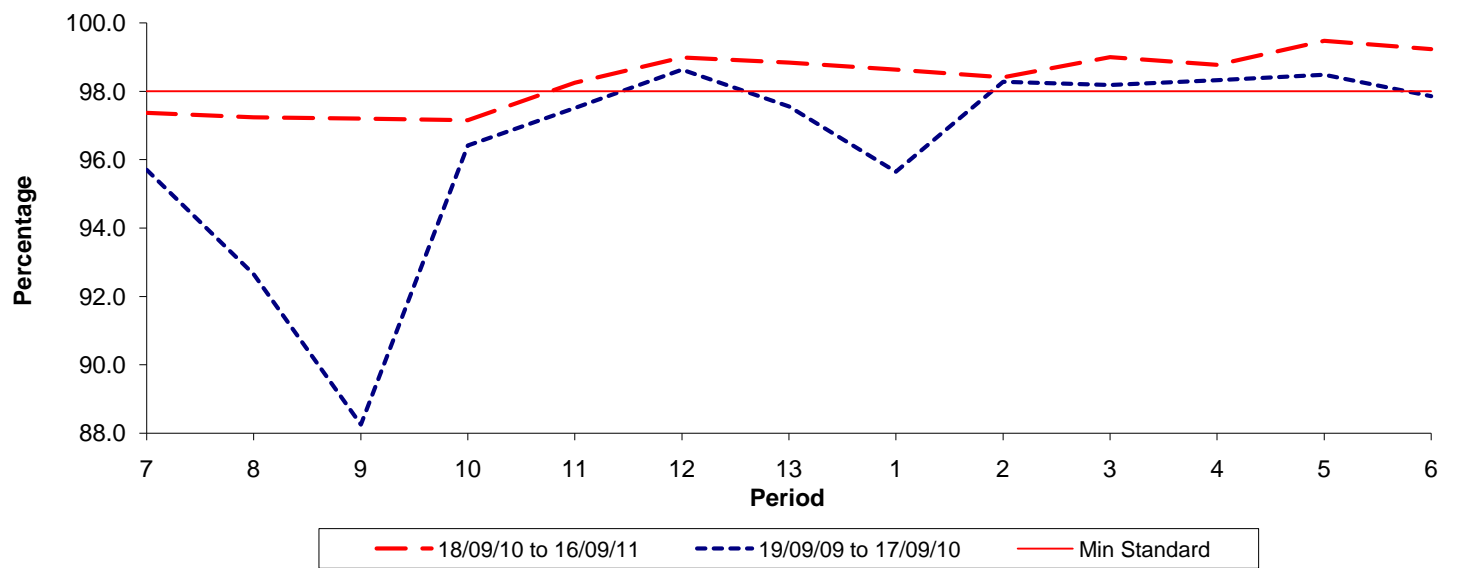


Date Range / Period	7	8	9	10	11	12	13	1	2	3	4	5	6
18/09/10 to 16/09/11	0.74	0.91	1.21	1.07	0.99	0.67	0.69	0.76	0.87	0.83	0.83	0.68	0.58
19/09/09 to 17/09/10	1.37	1.40	1.59	1.50	1.34	0.96	0.90	1.17	1.24	1.35	0.96	0.77	0.57
Min Standard	1.10	1.10	1.10	1.10	1.10	1.10	1.10	1.10	1.10	1.10	1.10	1.10	1.10

Excess Waiting Time figures are based on 12 weeks data

Kilometre Performance

% Kilometres Operated



Date Range / Period	7	8	9	10	11	12	13	1	2	3	4	5	6
18/09/10 to 16/09/11	97.37	97.23	97.20	97.15	98.25	98.99	98.84	98.63	98.41	99.00	98.78	99.48	99.24
19/09/09 to 17/09/10	95.70	92.65	88.25	96.41	97.51	98.63	97.55	95.64	98.27	98.18	98.32	98.48	97.85
Min Standard	98.00	98.00	98.00	98.00	98.00	98.00	98.00	98.00	98.00	98.00	98.00	98.00	98.00

Kilometre figures are based on 4 weeks data