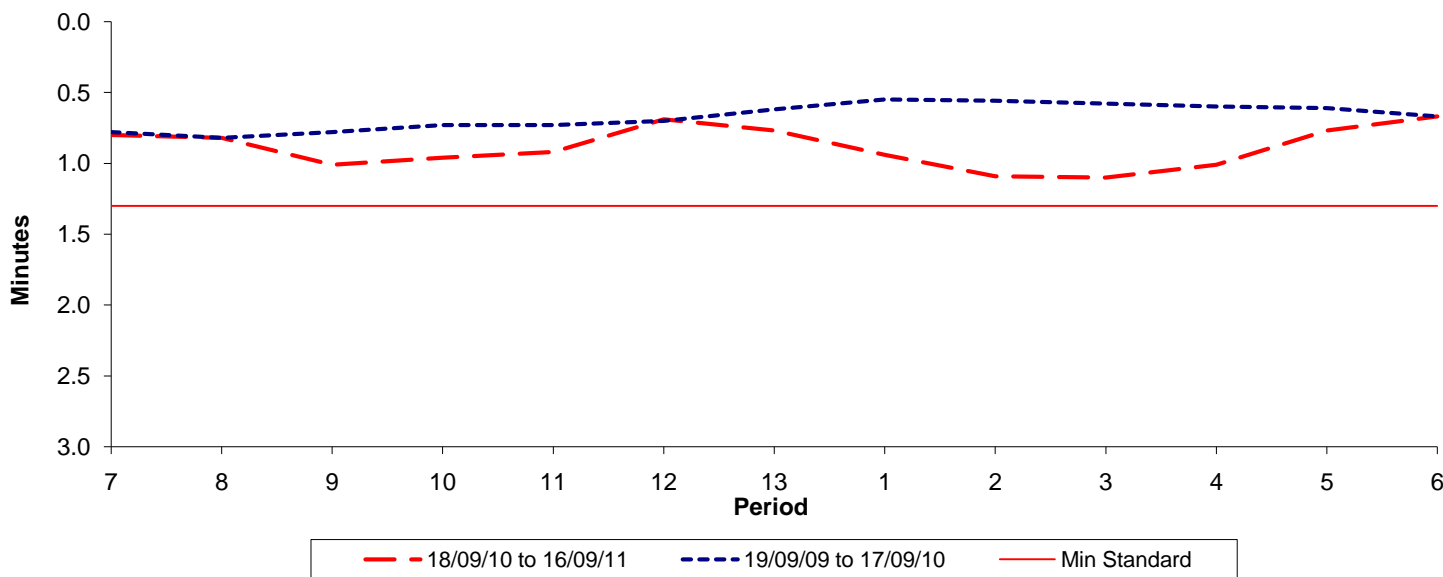




Reliability Performance (High Frequency)

Excess Waiting Time (minutes)

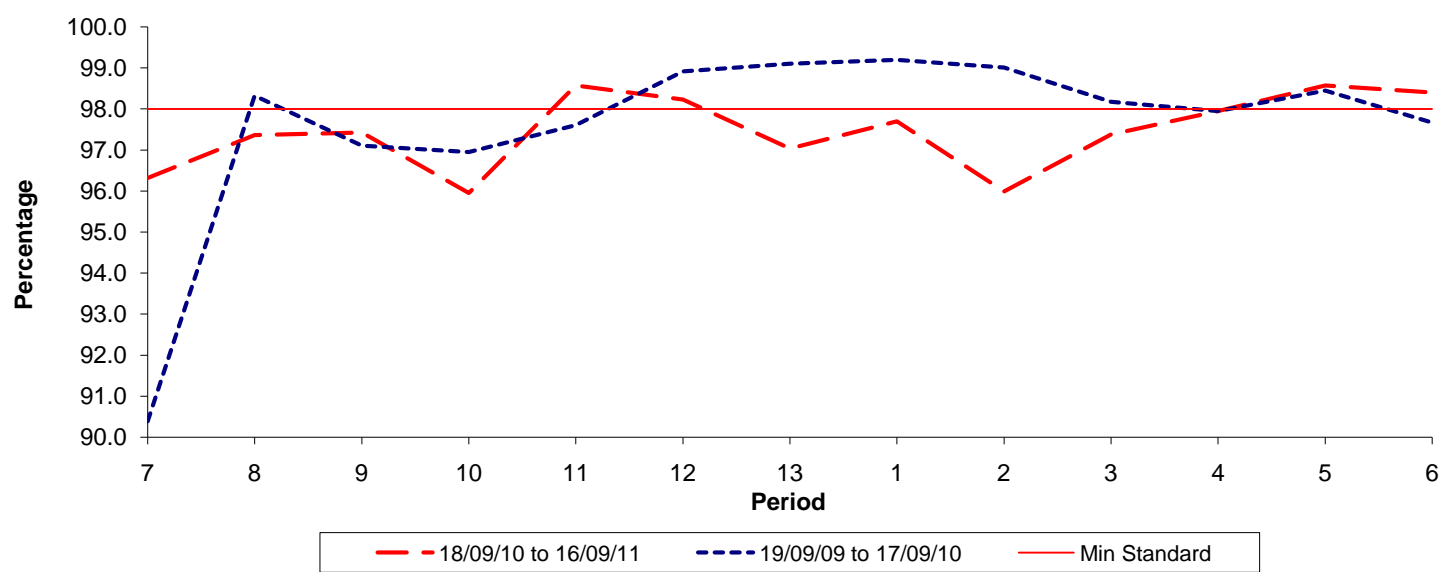


Date Range / Period	7	8	9	10	11	12	13	1	2	3	4	5	6
18/09/10 to 16/09/11	0.80	0.82	1.01	0.96	0.92	0.69	0.77	0.94	1.09	1.10	1.01	0.77	0.67
19/09/09 to 17/09/10	0.78	0.82	0.78	0.73	0.73	0.70	0.62	0.55	0.56	0.58	0.60	0.61	0.67
Min Standard	1.30	1.30	1.30	1.30	1.30	1.30	1.30	1.30	1.30	1.30	1.30	1.30	1.30

Excess Waiting Time figures are based on 12 weeks data

Kilometre Performance

% Kilometres Operated



Date Range / Period	7	8	9	10	11	12	13	1	2	3	4	5	6
18/09/10 to 16/09/11	96.32	97.36	97.43	95.95	98.57	98.23	97.04	97.70	95.99	97.38	97.95	98.57	98.40
19/09/09 to 17/09/10	90.39	98.32	97.11	96.95	97.61	98.92	99.10	99.20	99.01	98.17	97.95	98.45	97.67
Min Standard	98.00	98.00	98.00	98.00	98.00	98.00	98.00	98.00	98.00	98.00	98.00	98.00	98.00

Kilometre figures are based on 4 weeks data