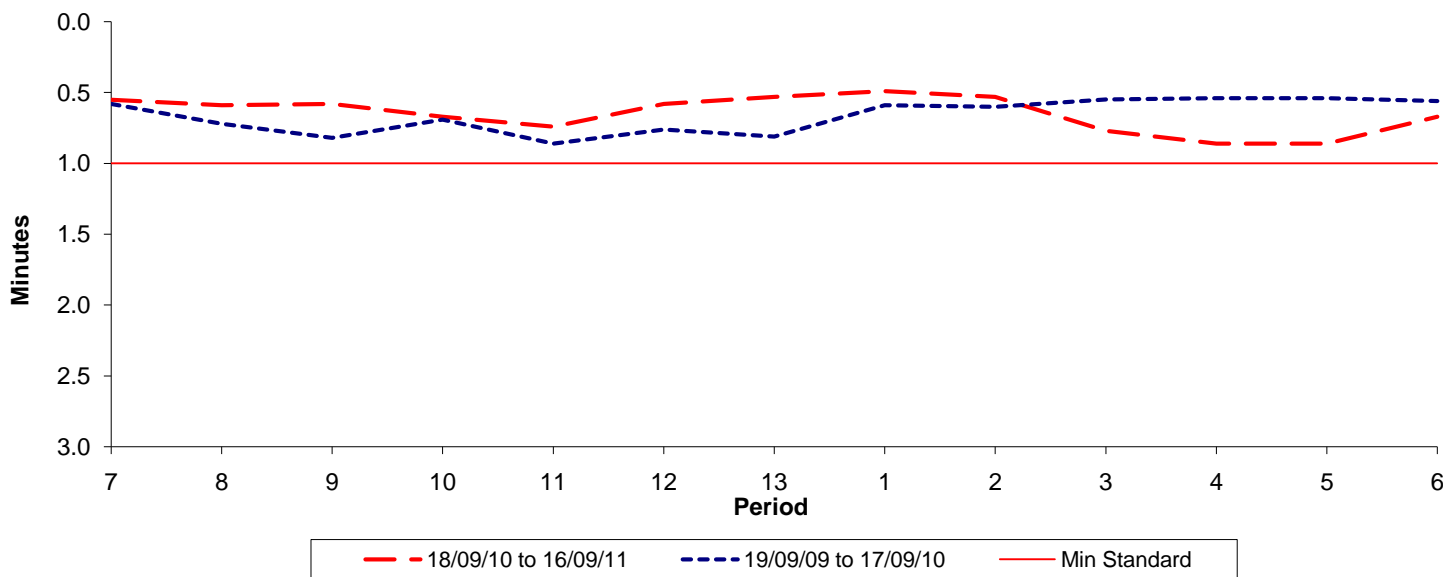




Reliability Performance (High Frequency)

Excess Waiting Time (minutes)

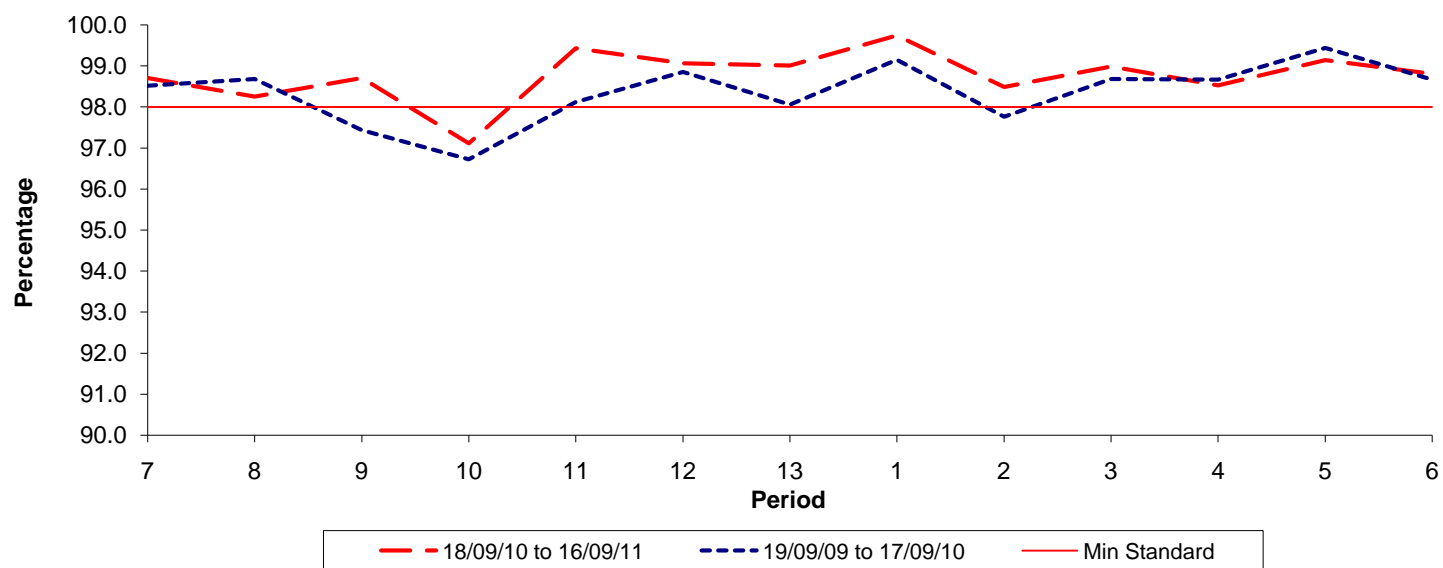


Date Range / Period	7	8	9	10	11	12	13	1	2	3	4	5	6
18/09/10 to 16/09/11	0.55	0.59	0.58	0.67	0.74	0.58	0.53	0.49	0.53	0.77	0.86	0.86	0.67
19/09/09 to 17/09/10	0.58	0.72	0.82	0.69	0.86	0.76	0.81	0.59	0.60	0.55	0.54	0.54	0.56
Min Standard	1.00	1.00	1.00	1.00	1.00	1.00	1.00	1.00	1.00	1.00	1.00	1.00	1.00

Excess Waiting Time figures are based on 12 weeks data

Kilometre Performance

% Kilometres Operated



Date Range / Period	7	8	9	10	11	12	13	1	2	3	4	5	6
18/09/10 to 16/09/11	98.70	98.25	98.70	97.11	99.43	99.06	99.01	99.74	98.48	98.98	98.52	99.14	98.80
19/09/09 to 17/09/10	98.52	98.68	97.43	96.72	98.12	98.85	98.06	99.15	97.76	98.68	98.67	99.44	98.67
Min Standard	98.00	98.00	98.00	98.00	98.00	98.00	98.00	98.00	98.00	98.00	98.00	98.00	98.00

Kilometre figures are based on 4 weeks data