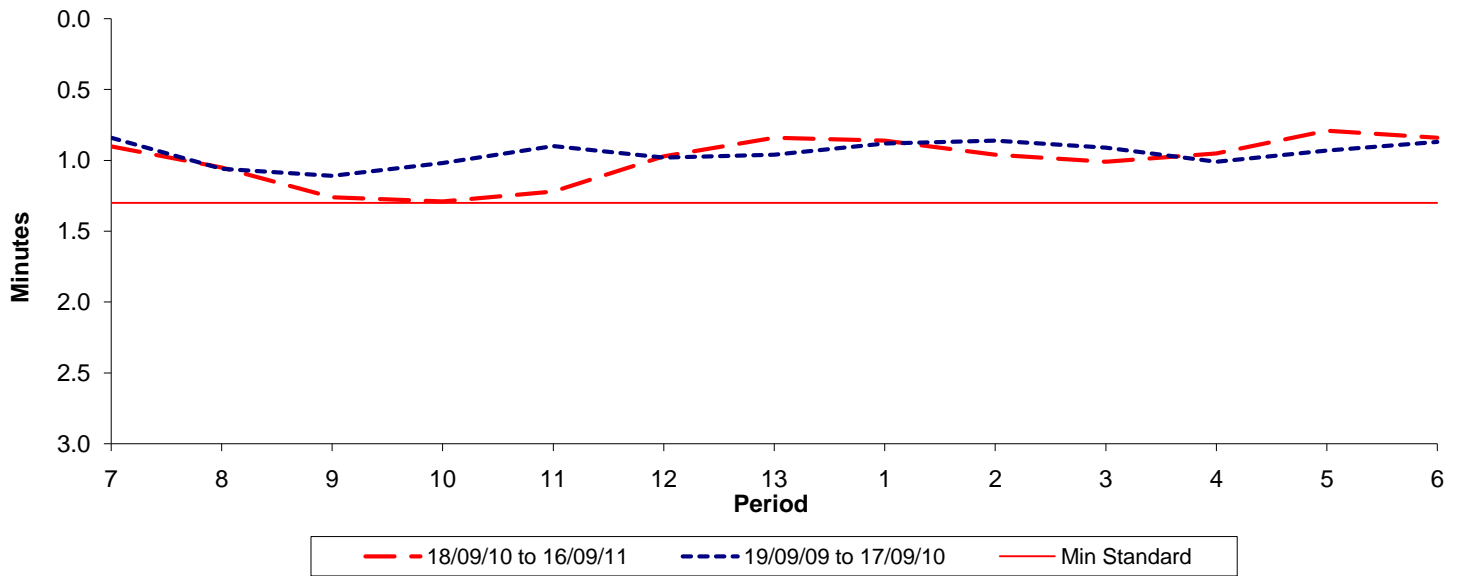




**Reliability Performance ( High Frequency )**

**Excess Waiting Time (minutes)**

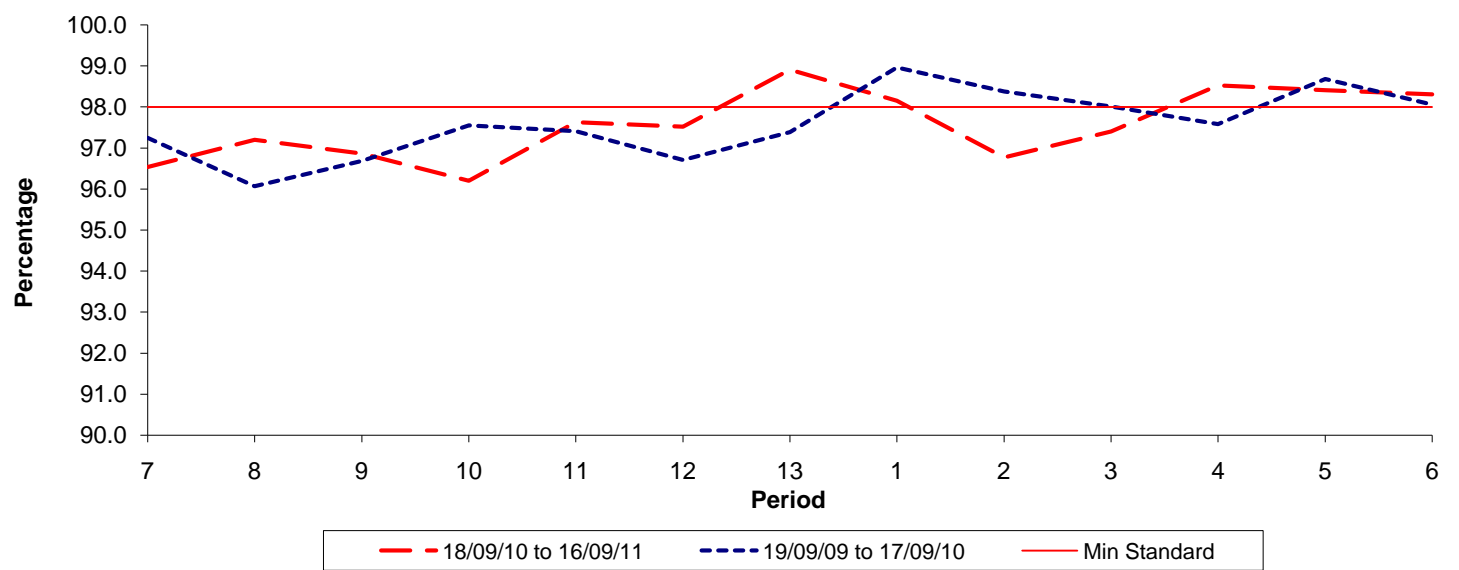


Date Range / Period	7	8	9	10	11	12	13	1	2	3	4	5	6
18/09/10 to 16/09/11	0.90	1.05	1.26	1.29	1.22	0.97	0.84	0.86	0.96	1.01	0.95	0.79	0.84
19/09/09 to 17/09/10	0.84	1.06	1.11	1.02	0.90	0.98	0.96	0.88	0.86	0.91	1.01	0.93	0.87
Min Standard	1.30	1.30	1.30	1.30	1.30	1.30	1.30	1.30	1.30	1.30	1.30	1.30	1.30

Excess Waiting Time figures are based on 12 weeks data

**Kilometre Performance**

**% Kilometres Operated**



Date Range / Period	7	8	9	10	11	12	13	1	2	3	4	5	6
18/09/10 to 16/09/11	96.53	97.20	96.86	96.20	97.63	97.51	98.91	98.15	96.77	97.40	98.53	98.41	98.31
19/09/09 to 17/09/10	97.25	96.07	96.69	97.56	97.41	96.71	97.39	98.97	98.38	98.02	97.58	98.69	98.06
Min Standard	98.00	98.00	98.00	98.00	98.00	98.00	98.00	98.00	98.00	98.00	98.00	98.00	98.00

Kilometre figures are based on 4 weeks data