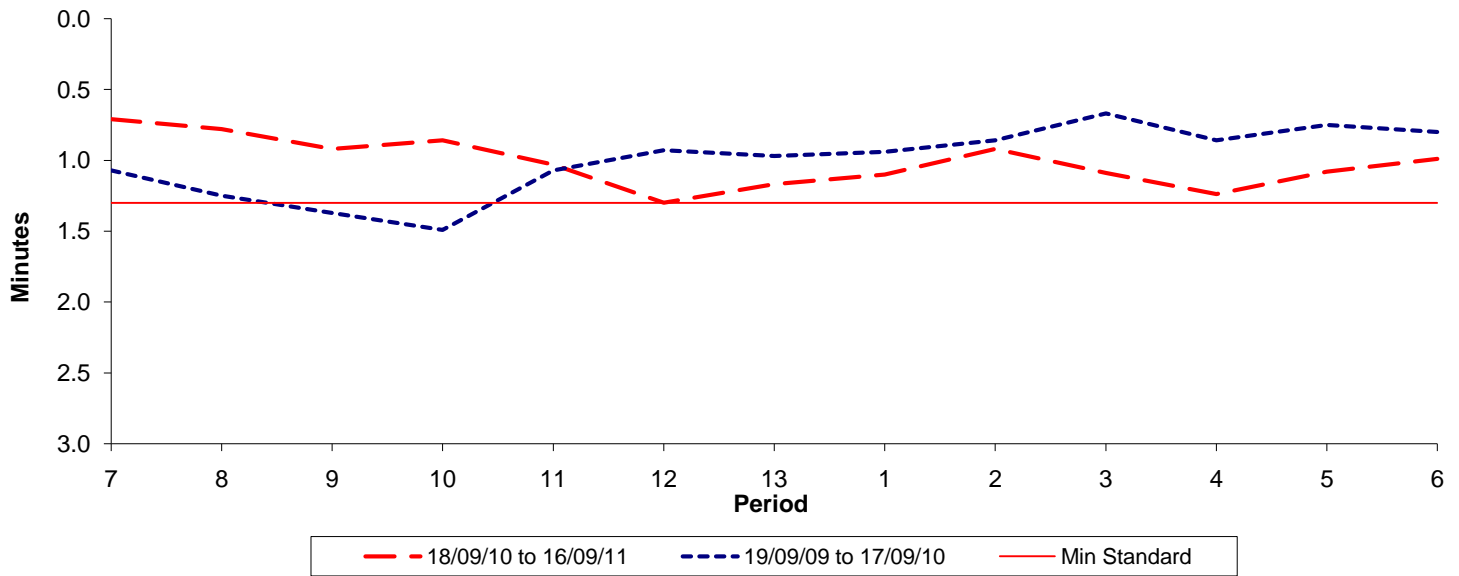




Reliability Performance (High Frequency)

Excess Waiting Time (minutes)

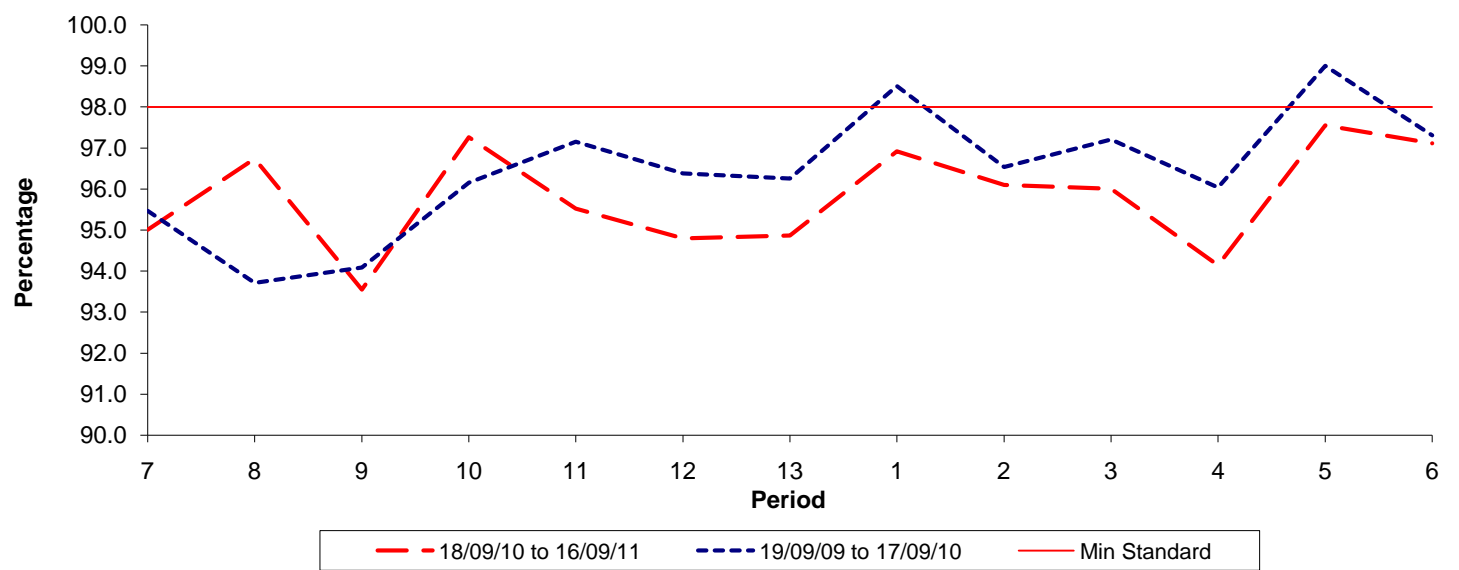


Date Range / Period	7	8	9	10	11	12	13	1	2	3	4	5	6
18/09/10 to 16/09/11	0.71	0.78	0.92	0.86	1.03	1.30	1.17	1.10	0.92	1.09	1.24	1.08	0.99
19/09/09 to 17/09/10	1.07	1.25	1.37	1.49	1.07	0.93	0.97	0.94	0.86	0.67	0.86	0.75	0.80
Min Standard	1.30	1.30	1.30	1.30	1.30	1.30	1.30	1.30	1.30	1.30	1.30	1.30	1.30

Excess Waiting Time figures are based on 12 weeks data

Kilometre Performance

% Kilometres Operated



Date Range / Period	7	8	9	10	11	12	13	1	2	3	4	5	6
18/09/10 to 16/09/11	95.01	96.74	93.55	97.26	95.52	94.79	94.87	96.92	96.10	96.01	94.14	97.55	97.11
19/09/09 to 17/09/10	95.46	93.71	94.09	96.15	97.15	96.38	96.26	98.51	96.54	97.21	96.04	99.00	97.31
Min Standard	98.00	98.00	98.00	98.00	98.00	98.00	98.00	98.00	98.00	98.00	98.00	98.00	98.00

Kilometre figures are based on 4 weeks data