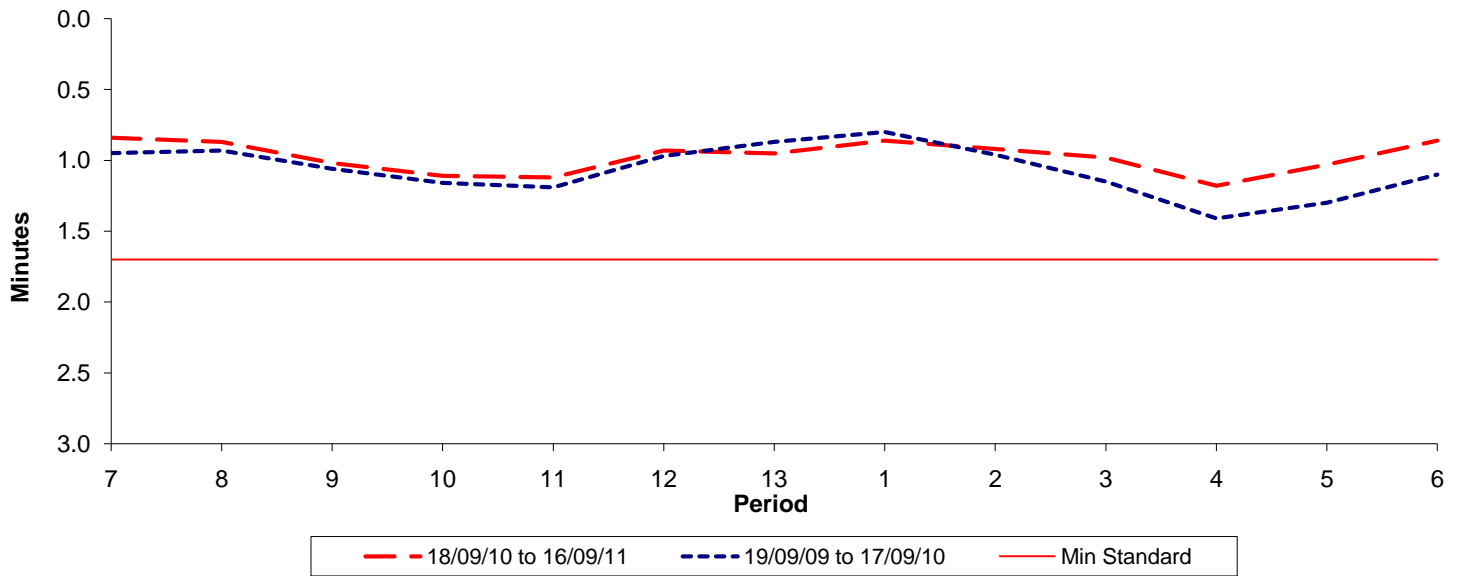




Reliability Performance (High Frequency)

Excess Waiting Time (minutes)

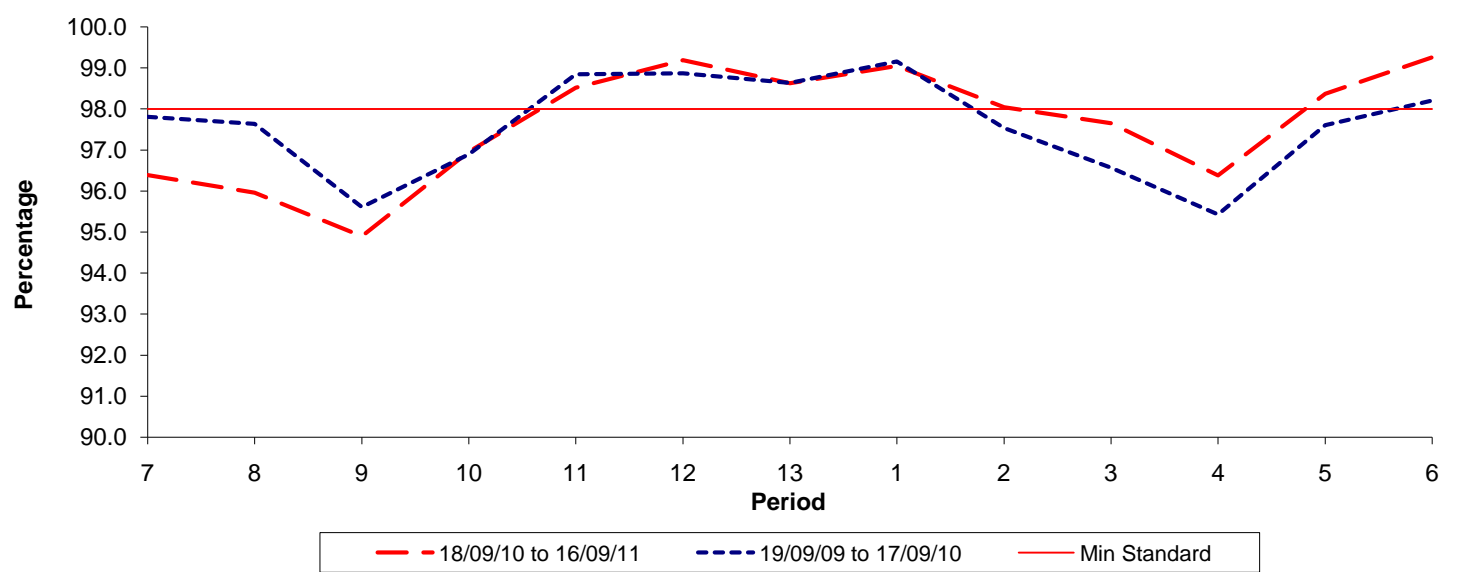


| Date Range / Period | 7 | 8 | 9 | 10 | 11 | 12 | 13 | 1 | 2 | 3 | 4 | 5 | 6 |
|----------------------|------|------|------|------|------|------|------|------|------|------|------|------|------|
| 18/09/10 to 16/09/11 | 0.84 | 0.87 | 1.02 | 1.11 | 1.12 | 0.93 | 0.95 | 0.86 | 0.92 | 0.98 | 1.18 | 1.03 | 0.86 |
| 19/09/09 to 17/09/10 | 0.95 | 0.93 | 1.06 | 1.16 | 1.19 | 0.97 | 0.87 | 0.80 | 0.96 | 1.15 | 1.41 | 1.30 | 1.10 |
| Min Standard | 1.70 | 1.70 | 1.70 | 1.70 | 1.70 | 1.70 | 1.70 | 1.70 | 1.70 | 1.70 | 1.70 | 1.70 | 1.70 |

Excess Waiting Time figures are based on 12 weeks data

Kilometre Performance

% Kilometres Operated



| Date Range / Period | 7 | 8 | 9 | 10 | 11 | 12 | 13 | 1 | 2 | 3 | 4 | 5 | 6 |
|----------------------|-------|-------|-------|-------|-------|-------|-------|-------|-------|-------|-------|-------|-------|
| 18/09/10 to 16/09/11 | 96.39 | 95.96 | 94.90 | 96.96 | 98.52 | 99.19 | 98.63 | 99.05 | 98.04 | 97.65 | 96.38 | 98.37 | 99.26 |
| 19/09/09 to 17/09/10 | 97.81 | 97.64 | 95.61 | 96.90 | 98.85 | 98.87 | 98.64 | 99.16 | 97.54 | 96.57 | 95.43 | 97.61 | 98.21 |
| Min Standard | 98.00 | 98.00 | 98.00 | 98.00 | 98.00 | 98.00 | 98.00 | 98.00 | 98.00 | 98.00 | 98.00 | 98.00 | 98.00 |

Kilometre figures are based on 4 weeks data