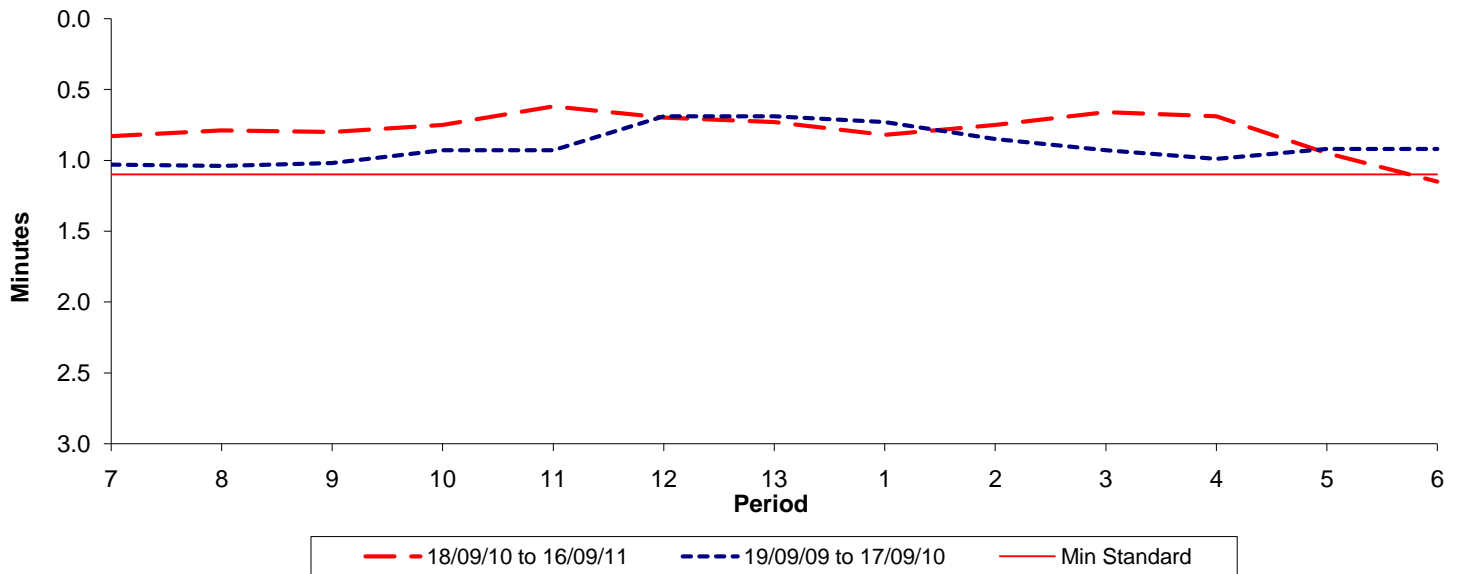




Reliability Performance (High Frequency)

Excess Waiting Time (minutes)

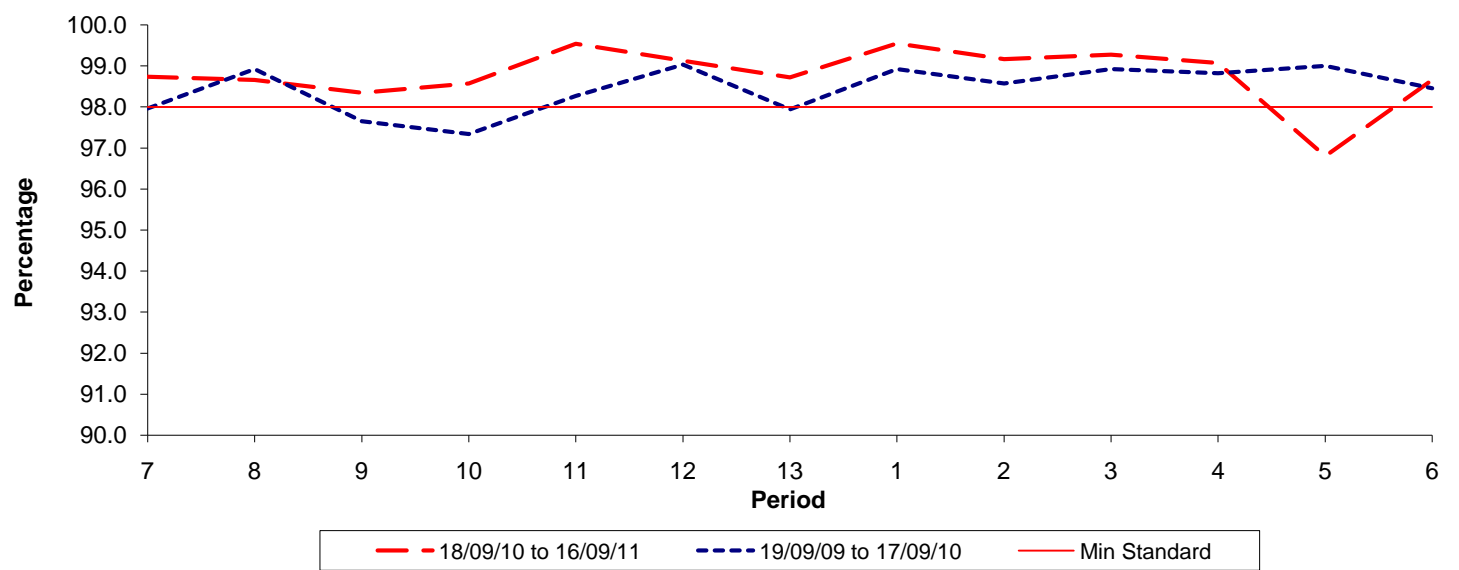


Date Range / Period	7	8	9	10	11	12	13	1	2	3	4	5	6
18/09/10 to 16/09/11	0.83	0.79	0.80	0.75	0.62	0.70	0.73	0.82	0.75	0.66	0.69	0.95	1.15
19/09/09 to 17/09/10	1.03	1.04	1.02	0.93	0.93	0.69	0.69	0.73	0.85	0.93	0.99	0.92	0.92
Min Standard	1.10	1.10	1.10	1.10	1.10	1.10	1.10	1.10	1.10	1.10	1.10	1.10	1.10

Excess Waiting Time figures are based on 12 weeks data

Kilometre Performance

% Kilometres Operated



Date Range / Period	7	8	9	10	11	12	13	1	2	3	4	5	6
18/09/10 to 16/09/11	98.74	98.66	98.35	98.57	99.54	99.13	98.72	99.55	99.17	99.28	99.07	96.80	98.66
19/09/09 to 17/09/10	97.96	98.92	97.65	97.34	98.27	99.03	97.94	98.92	98.57	98.92	98.82	99.00	98.45
Min Standard	98.00	98.00	98.00	98.00	98.00	98.00	98.00	98.00	98.00	98.00	98.00	98.00	98.00

Kilometre figures are based on 4 weeks data