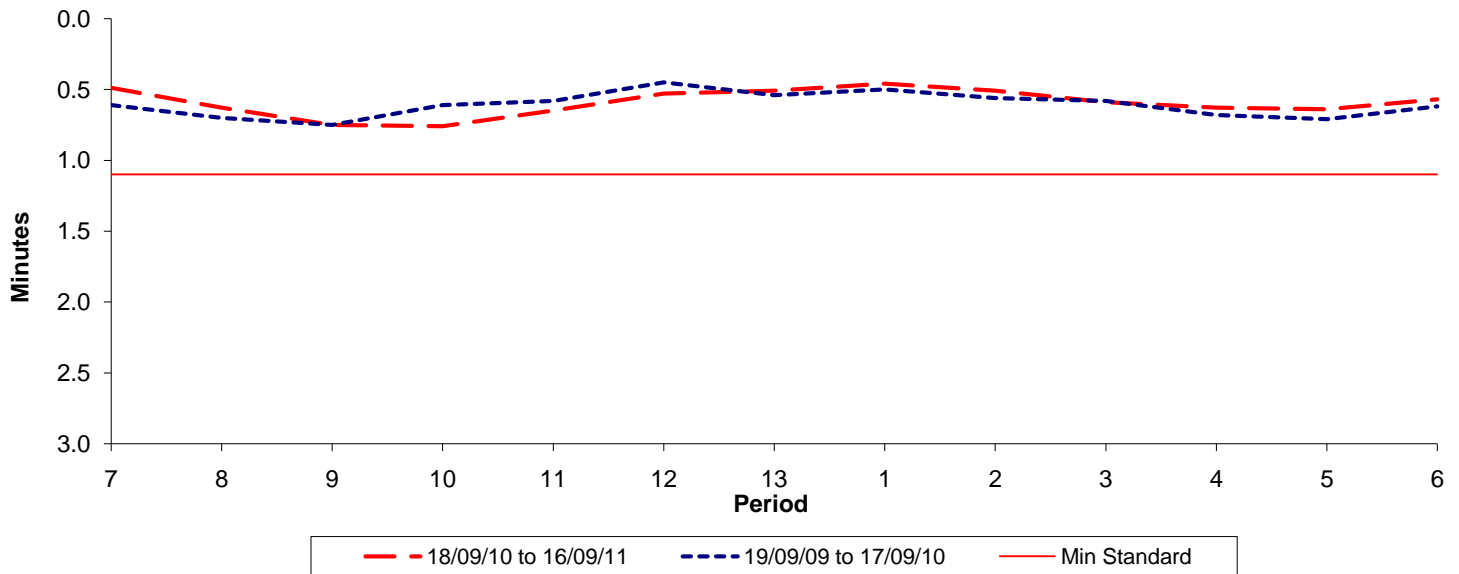




Reliability Performance (High Frequency)

Excess Waiting Time (minutes)

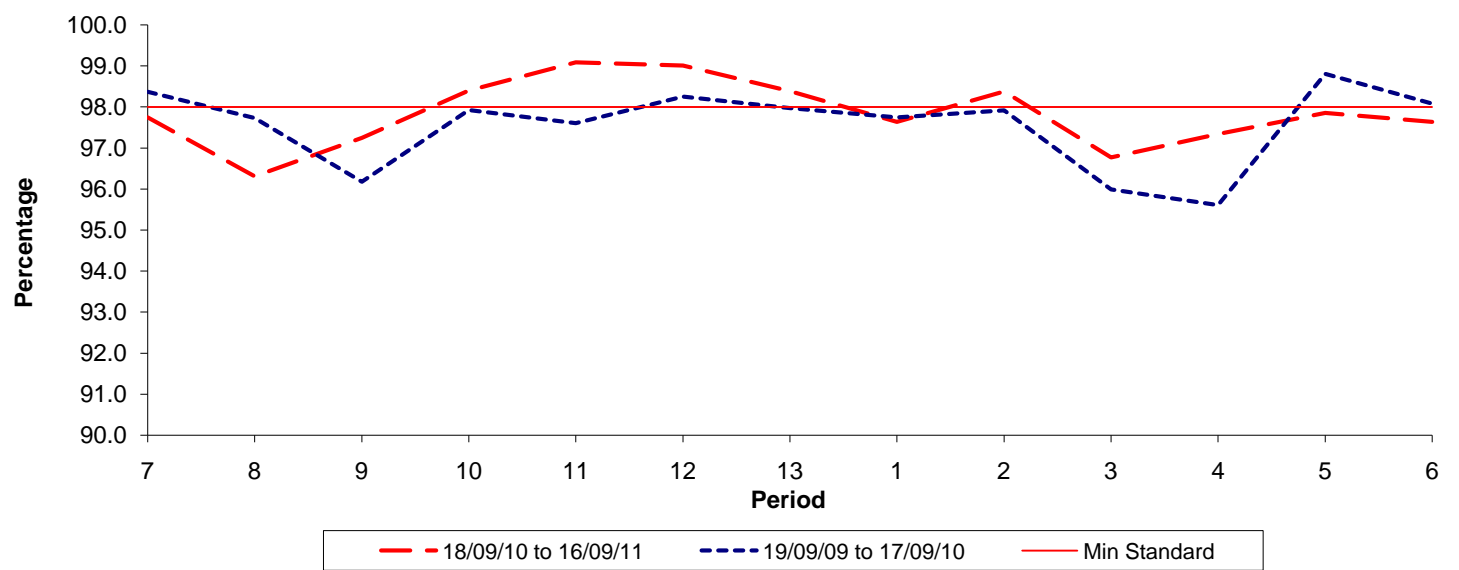


Date Range / Period	7	8	9	10	11	12	13	1	2	3	4	5	6
18/09/10 to 16/09/11	0.49	0.63	0.75	0.76	0.65	0.53	0.51	0.46	0.51	0.59	0.63	0.64	0.57
19/09/09 to 17/09/10	0.61	0.70	0.75	0.61	0.58	0.45	0.54	0.50	0.56	0.58	0.68	0.71	0.62
Min Standard	1.10	1.10	1.10	1.10	1.10	1.10	1.10	1.10	1.10	1.10	1.10	1.10	1.10

Excess Waiting Time figures are based on 12 weeks data

Kilometre Performance

% Kilometres Operated



Date Range / Period	7	8	9	10	11	12	13	1	2	3	4	5	6
18/09/10 to 16/09/11	97.75	96.31	97.25	98.40	99.09	99.01	98.39	97.64	98.38	96.77	97.34	97.86	97.64
19/09/09 to 17/09/10	98.37	97.73	96.17	97.93	97.60	98.25	97.97	97.74	97.91	95.99	95.60	98.80	98.08
Min Standard	98.00	98.00	98.00	98.00	98.00	98.00	98.00	98.00	98.00	98.00	98.00	98.00	98.00

Kilometre figures are based on 4 weeks data