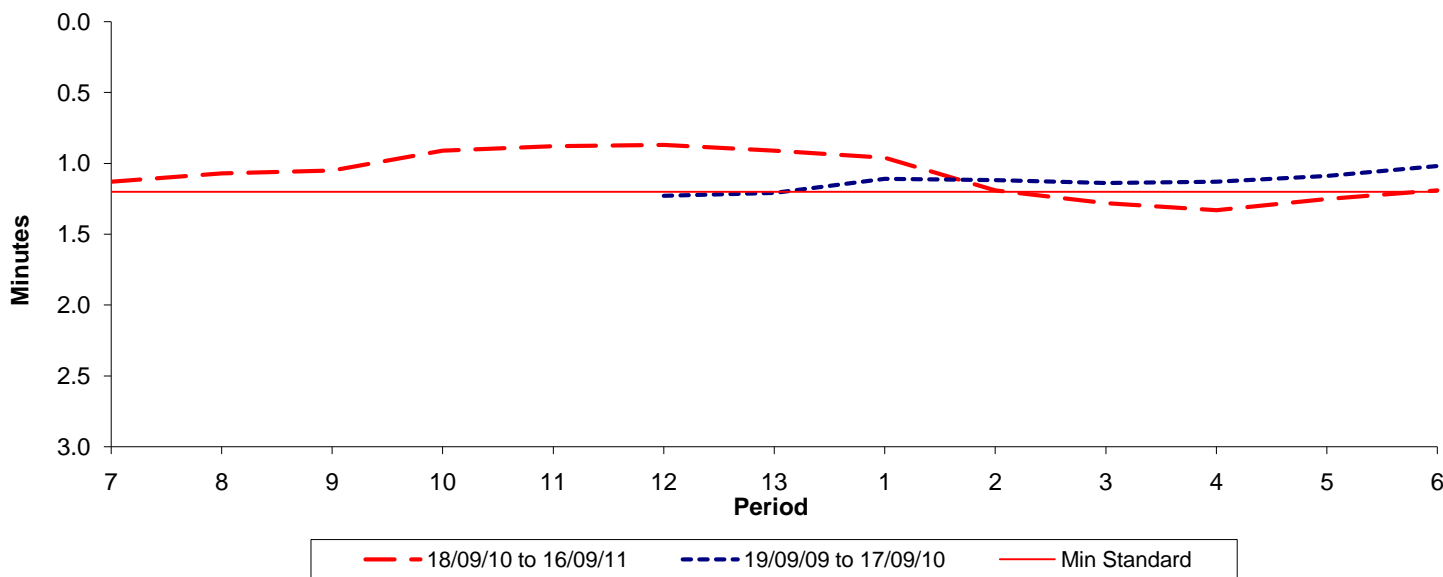




Reliability Performance (High Frequency)

Excess Waiting Time (minutes)

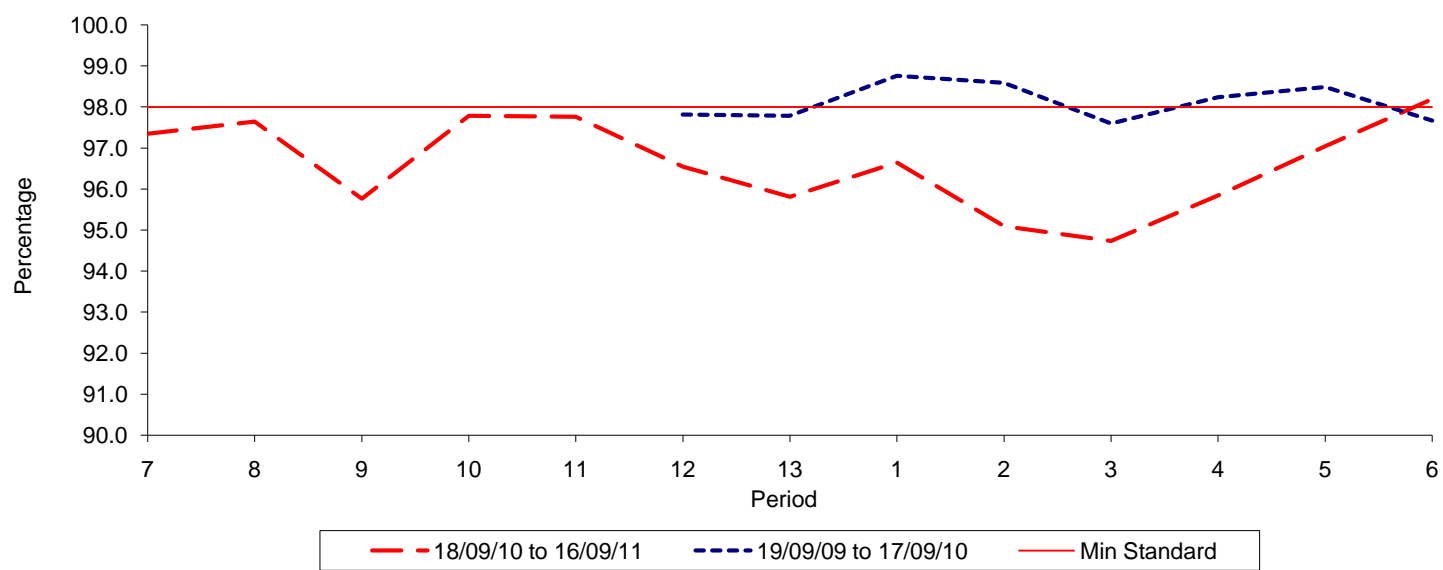


Date Range / Period	7	8	9	10	11	12	13	1	2	3	4	5	6
18/09/10 to 16/09/11	1.13	1.07	1.05	0.91	0.88	0.87	0.91	0.96	1.19	1.28	1.33	1.25	1.19
19/09/09 to 17/09/10						1.23	1.21	1.11	1.12	1.14	1.13	1.09	1.02
Min Standard	1.20	1.20	1.20	1.20	1.20	1.20	1.20	1.20	1.20	1.20	1.20	1.20	1.20

Excess Waiting Time figures are based on 12 weeks data

Kilometre Performance

% Kilometres Operated



Date Range / Period	7	8	9	10	11	12	13	1	2	3	4	5	6
18/09/10 to 16/09/11	97.35	97.64	95.76	97.78	97.76	96.54	95.81	96.64	95.09	94.73	95.84	97.04	98.19
19/09/09 to 17/09/10						97.82	97.79	98.76	98.59	97.60	98.24	98.49	97.67
Min Standard	98.00	98.00	98.00	98.00	98.00	98.00	98.00	98.00	98.00	98.00	98.00	98.00	98.00

Kilometre figures are based on 4 weeks data