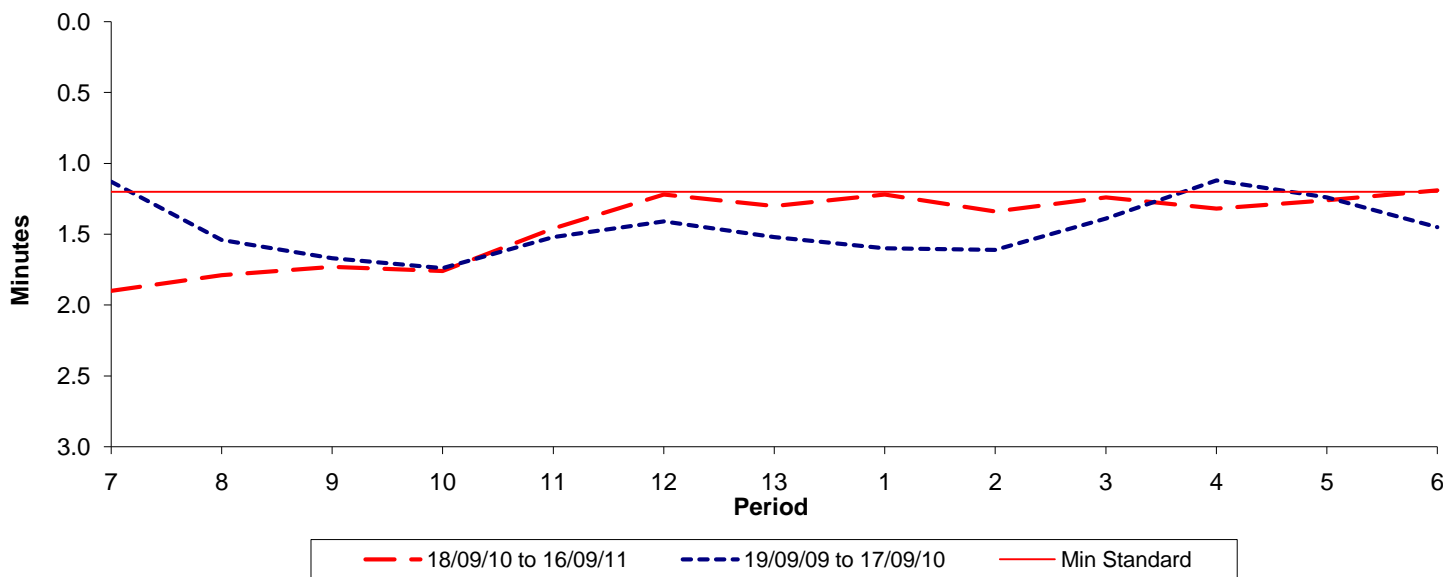




Reliability Performance (High Frequency)

Excess Waiting Time (minutes)

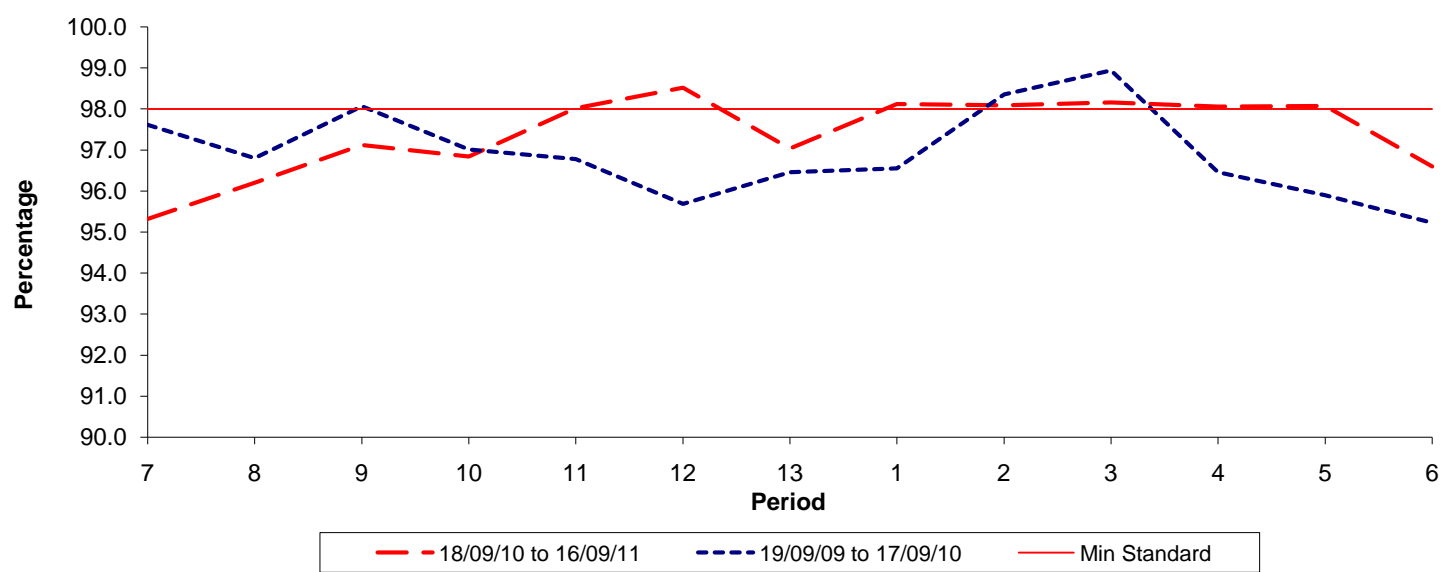


Date Range / Period	7	8	9	10	11	12	13	1	2	3	4	5	6
18/09/10 to 16/09/11	1.90	1.79	1.73	1.76	1.46	1.22	1.30	1.22	1.34	1.24	1.32	1.26	1.19
19/09/09 to 17/09/10	1.13	1.54	1.67	1.74	1.52	1.41	1.52	1.60	1.61	1.39	1.12	1.24	1.45
Min Standard	1.20	1.20	1.20	1.20	1.20	1.20	1.20	1.20	1.20	1.20	1.20	1.20	1.20

Excess Waiting Time figures are based on 12 weeks data

Kilometre Performance

% Kilometres Operated



Date Range / Period	7	8	9	10	11	12	13	1	2	3	4	5	6
18/09/10 to 16/09/11	95.32	96.20	97.12	96.84	98.02	98.52	97.04	98.12	98.09	98.16	98.06	98.08	96.60
19/09/09 to 17/09/10	97.61	96.80	98.07	97.01	96.78	95.68	96.46	96.55	98.36	98.94	96.45	95.90	95.22
Min Standard	98.00	98.00	98.00	98.00	98.00	98.00	98.00	98.00	98.00	98.00	98.00	98.00	98.00

Kilometre figures are based on 4 weeks data