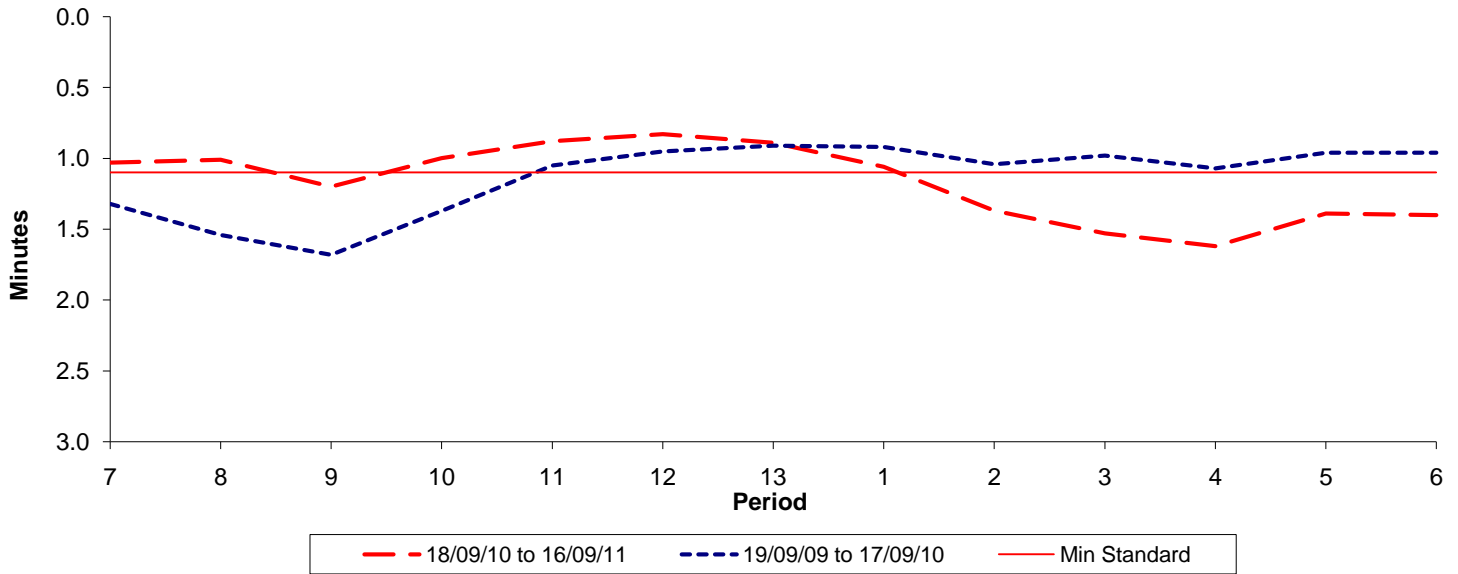




**Reliability Performance ( High Frequency )**

**Excess Waiting Time (minutes)**

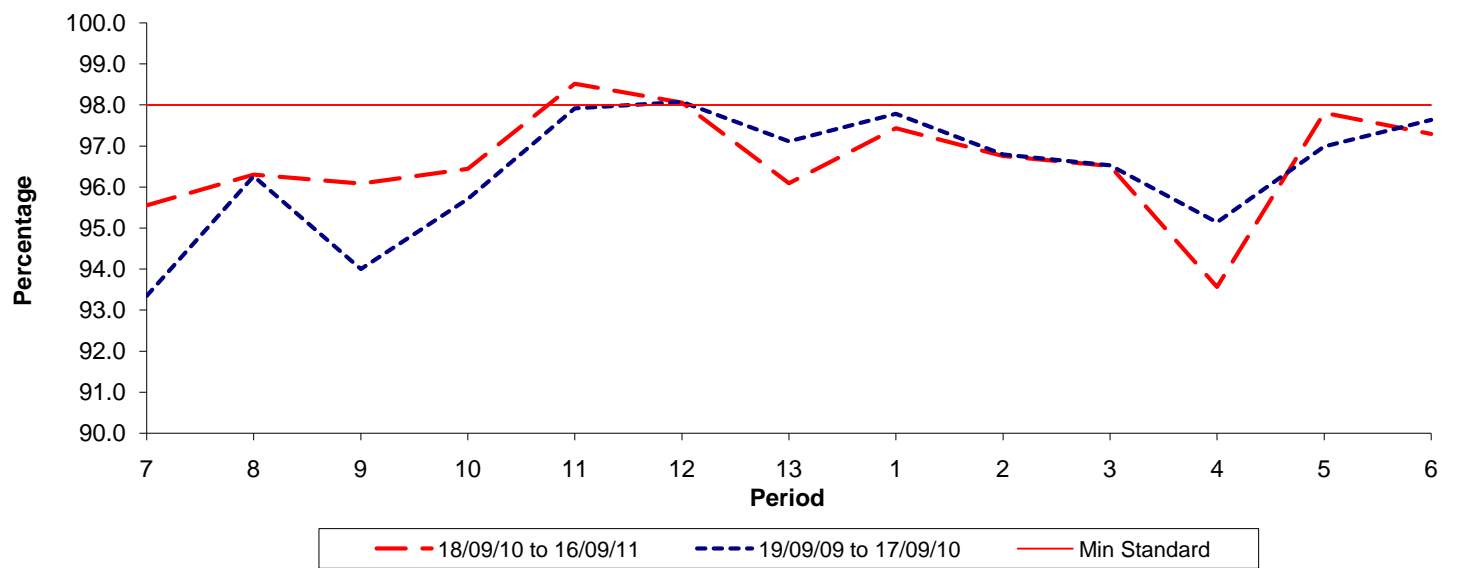


Date Range / Period	7	8	9	10	11	12	13	1	2	3	4	5	6
18/09/10 to 16/09/11	1.03	1.01	1.20	1.00	0.88	0.83	0.89	1.06	1.37	1.53	1.62	1.39	1.40
19/09/09 to 17/09/10	1.32	1.54	1.68	1.37	1.05	0.95	0.91	0.92	1.04	0.98	1.07	0.96	0.96
Min Standard	1.10	1.10	1.10	1.10	1.10	1.10	1.10	1.10	1.10	1.10	1.10	1.10	1.10

Excess Waiting Time figures are based on 12 weeks data

**Kilometre Performance**

**% Kilometres Operated**



Date Range / Period	7	8	9	10	11	12	13	1	2	3	4	5	6
18/09/10 to 16/09/11	95.55	96.30	96.08	96.44	98.52	98.06	96.09	97.43	96.75	96.51	93.56	97.81	97.29
19/09/09 to 17/09/10	93.35	96.26	94.00	95.71	97.91	98.07	97.11	97.78	96.79	96.53	95.14	96.99	97.64
Min Standard	98.00	98.00	98.00	98.00	98.00	98.00	98.00	98.00	98.00	98.00	98.00	98.00	98.00

Kilometre figures are based on 4 weeks data