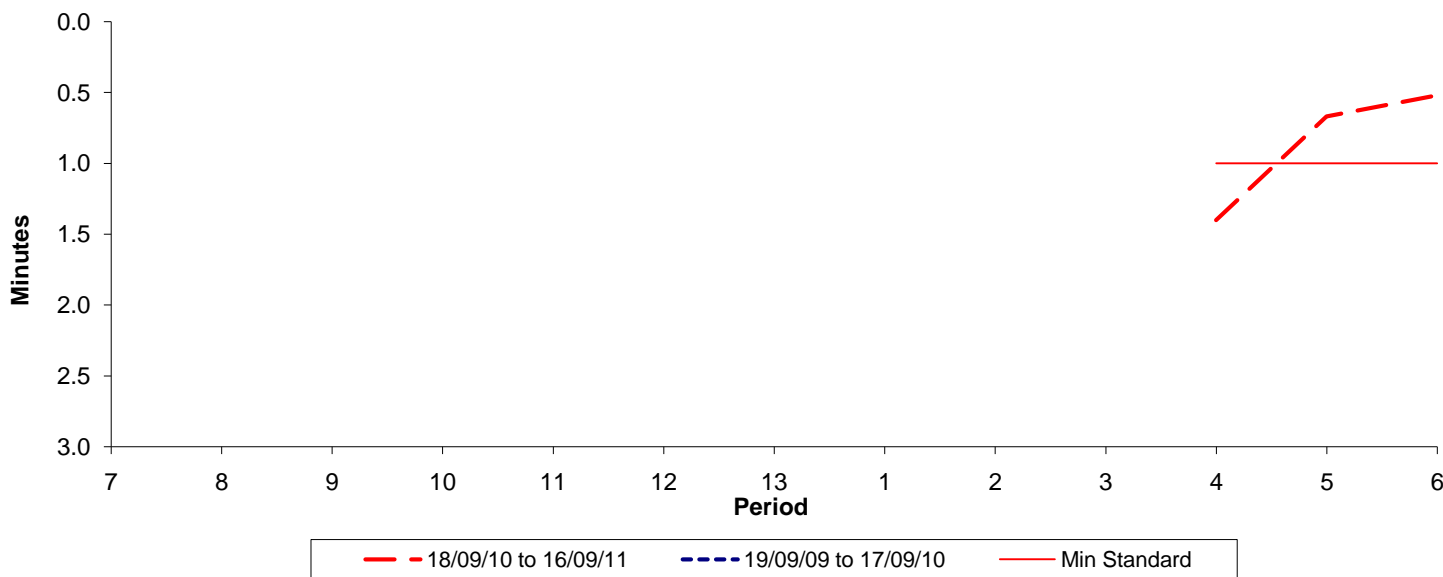




**Reliability Performance ( High Frequency )**

**Excess Waiting Time (minutes)**

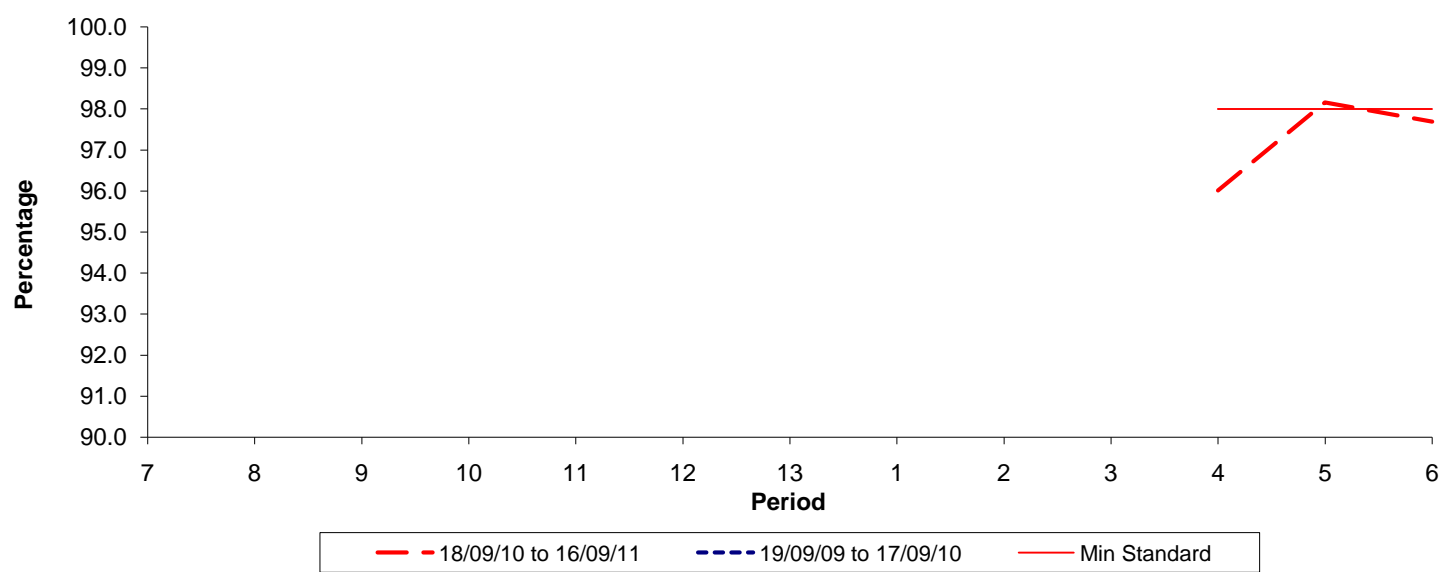


Date Range / Period	7	8	9	10	11	12	13	1	2	3	4	5	6
18/09/10 to 16/09/11											1.40	0.67	0.52
19/09/09 to 17/09/10													
Min Standard											1.00	1.00	1.00

Excess Waiting Time figures are based on 12 weeks data

**Kilometre Performance**

**% Kilometres Operated**



Date Range / Period	7	8	9	10	11	12	13	1	2	3	4	5	6
18/09/10 to 16/09/11											96.01	98.16	97.69
19/09/09 to 17/09/10													
Min Standard											98.00	98.00	98.00

Kilometre figures are based on 4 weeks data