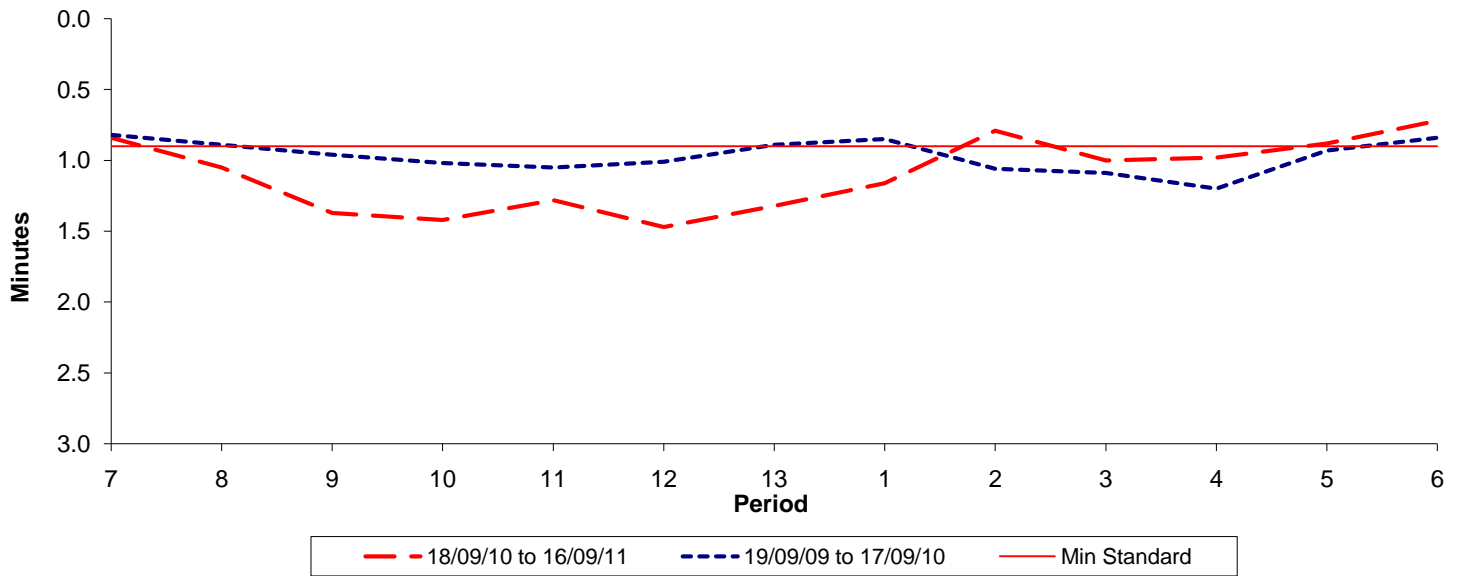




Reliability Performance (High Frequency)

Excess Waiting Time (minutes)

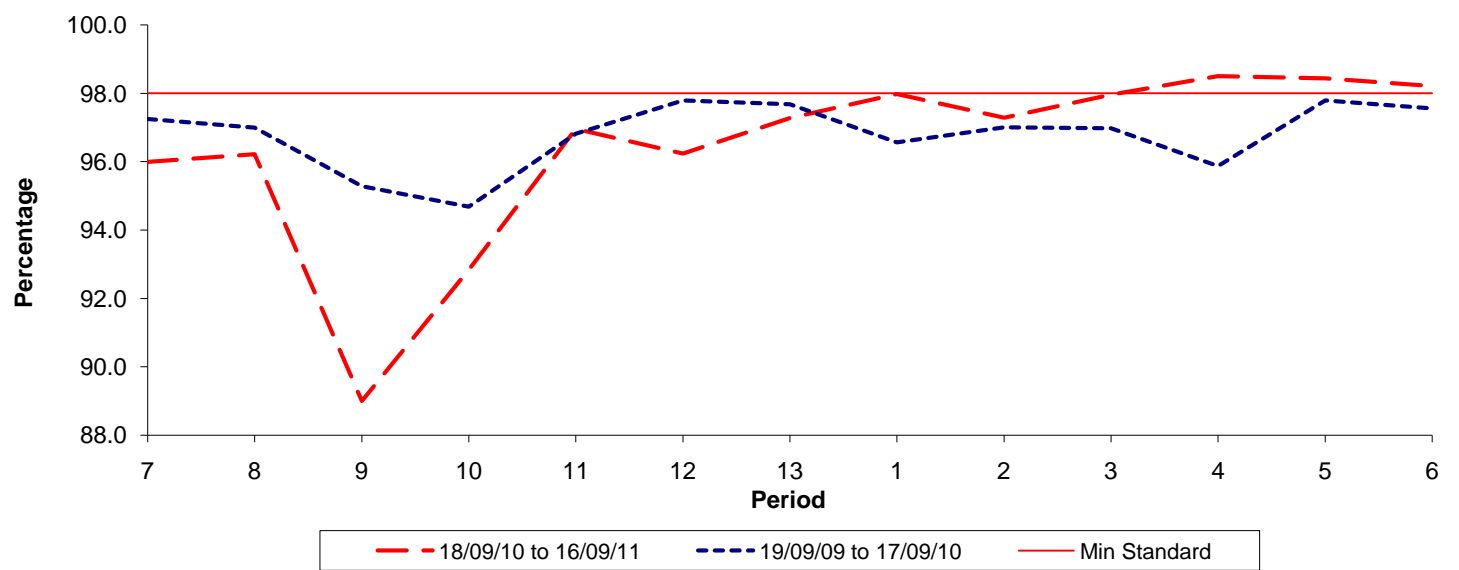


Date Range / Period	7	8	9	10	11	12	13	1	2	3	4	5	6
18/09/10 to 16/09/11	0.84	1.05	1.37	1.42	1.28	1.47	1.32	1.16	0.79	1.00	0.98	0.88	0.72
19/09/09 to 17/09/10	0.82	0.89	0.96	1.02	1.05	1.01	0.89	0.85	1.06	1.09	1.20	0.93	0.84
Min Standard	0.90	0.90	0.90	0.90	0.90	0.90	0.90	0.90	0.90	0.90	0.90	0.90	0.90

Excess Waiting Time figures are based on 12 weeks data

Kilometre Performance

% Kilometres Operated



Date Range / Period	7	8	9	10	11	12	13	1	2	3	4	5	6
18/09/10 to 16/09/11	95.99	96.22	89.00	92.84	96.95	96.24	97.27	97.98	97.28	97.96	98.50	98.43	98.21
19/09/09 to 17/09/10	97.25	96.99	95.28	94.68	96.82	97.79	97.68	96.57	97.01	96.98	95.87	97.79	97.55
Min Standard	98.00	98.00	98.00	98.00	98.00	98.00	98.00	98.00	98.00	98.00	98.00	98.00	98.00

Kilometre figures are based on 4 weeks data