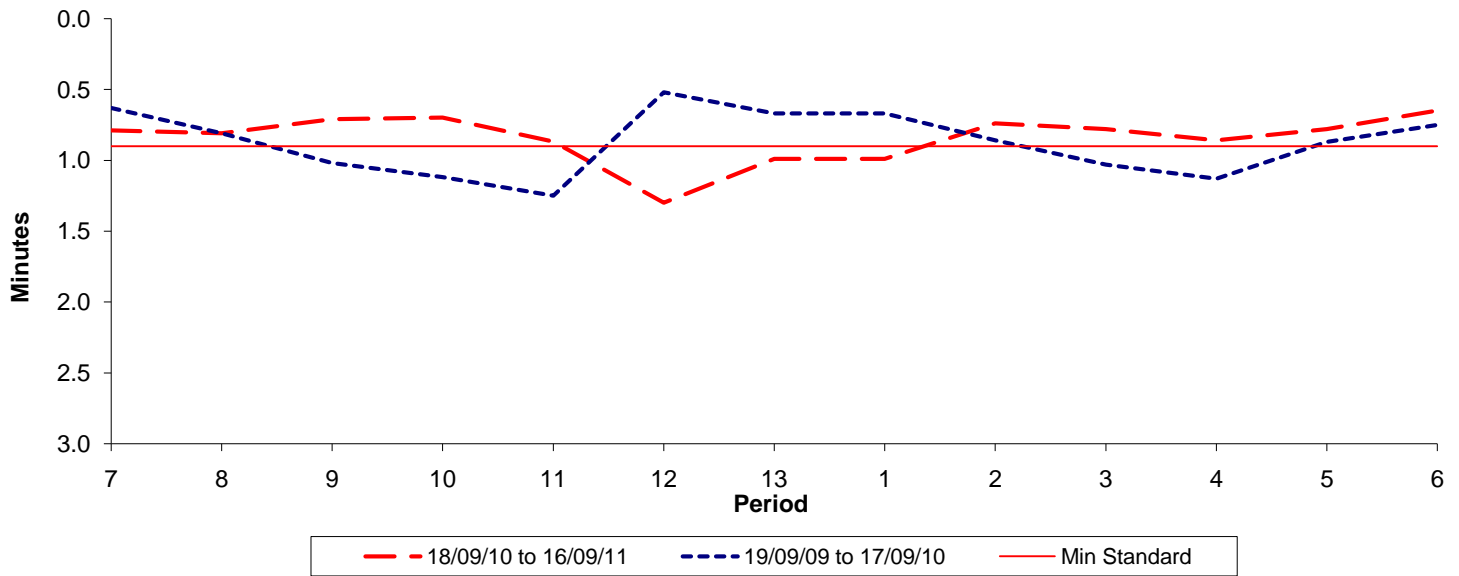




Reliability Performance (High Frequency)

Excess Waiting Time (minutes)

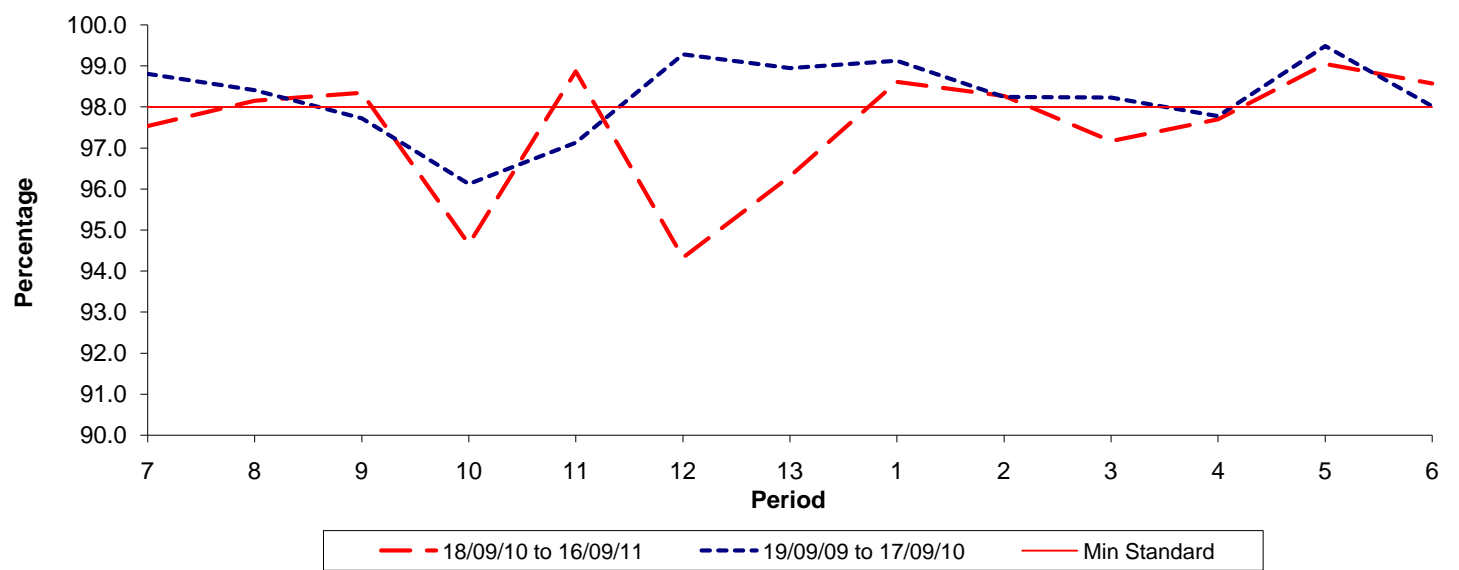


Date Range / Period	7	8	9	10	11	12	13	1	2	3	4	5	6
18/09/10 to 16/09/11	0.79	0.81	0.71	0.70	0.87	1.30	0.99	0.99	0.74	0.78	0.86	0.78	0.65
19/09/09 to 17/09/10	0.63	0.81	1.02	1.12	1.25	0.52	0.67	0.67	0.86	1.03	1.13	0.87	0.75
Min Standard	0.90	0.90	0.90	0.90	0.90	0.90	0.90	0.90	0.90	0.90	0.90	0.90	0.90

Excess Waiting Time figures are based on 12 weeks data

Kilometre Performance

% Kilometres Operated



Date Range / Period	7	8	9	10	11	12	13	1	2	3	4	5	6
18/09/10 to 16/09/11	97.54	98.15	98.35	94.65	98.87	94.33	96.31	98.61	98.27	97.17	97.70	99.05	98.57
19/09/09 to 17/09/10	98.81	98.41	97.72	96.12	97.13	99.28	98.95	99.12	98.24	98.23	97.77	99.49	98.02
Min Standard	98.00	98.00	98.00	98.00	98.00	98.00	98.00	98.00	98.00	98.00	98.00	98.00	98.00

Kilometre figures are based on 4 weeks data