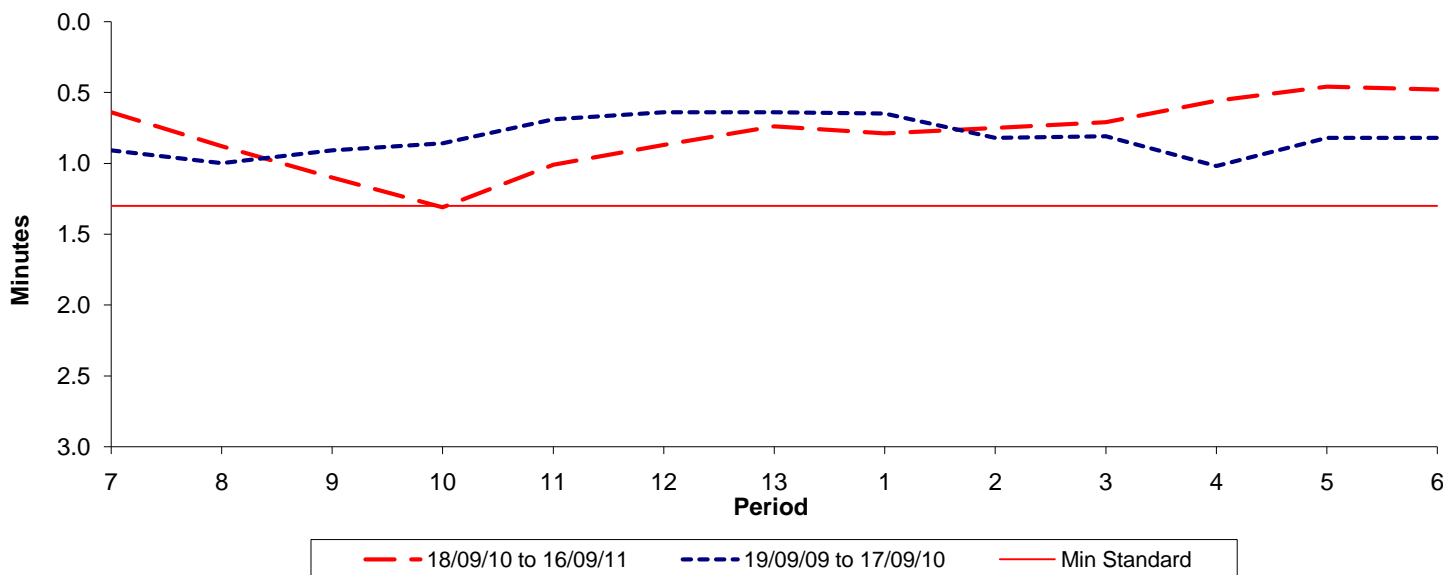




**Reliability Performance ( High Frequency )**

**Excess Waiting Time (minutes)**

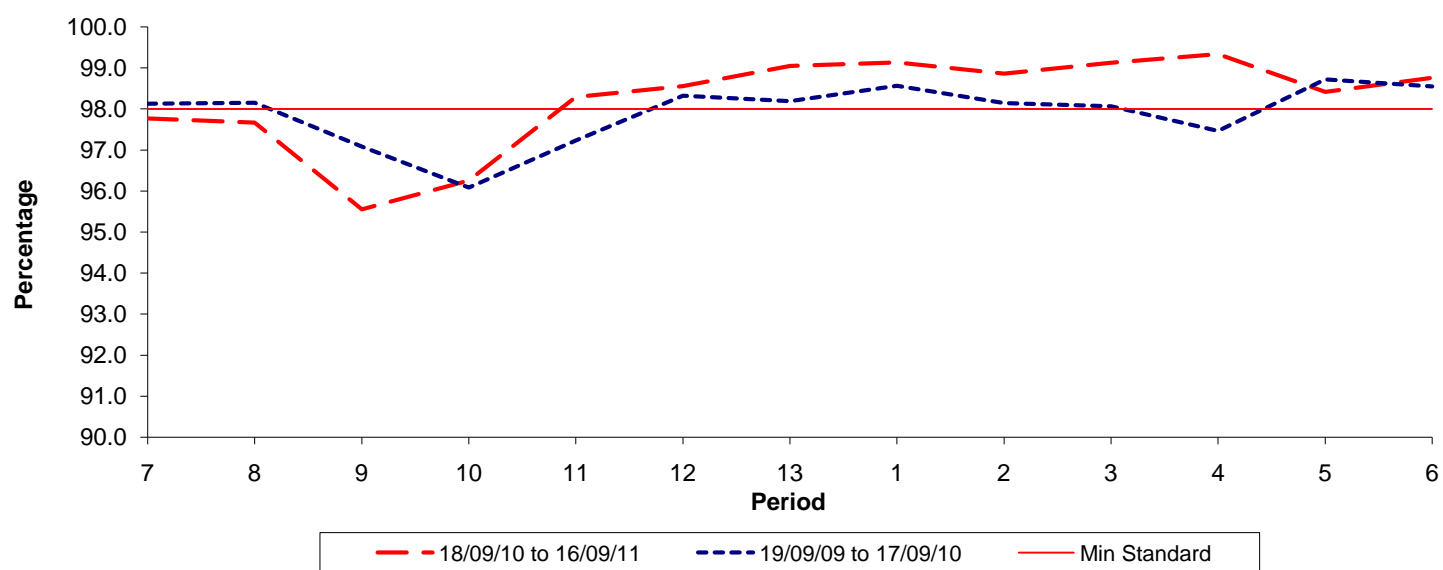


Date Range / Period	7	8	9	10	11	12	13	1	2	3	4	5	6
18/09/10 to 16/09/11	0.64	0.88	1.10	1.31	1.01	0.87	0.74	0.79	0.75	0.71	0.56	0.46	0.48
19/09/09 to 17/09/10	0.91	1.00	0.91	0.86	0.69	0.64	0.64	0.65	0.82	0.81	1.02	0.82	0.82
Min Standard	1.30	1.30	1.30	1.30	1.30	1.30	1.30	1.30	1.30	1.30	1.30	1.30	1.30

Excess Waiting Time figures are based on 12 weeks data

**Kilometre Performance**

**% Kilometres Operated**



Date Range / Period	7	8	9	10	11	12	13	1	2	3	4	5	6
18/09/10 to 16/09/11	97.77	97.67	95.55	96.25	98.29	98.56	99.05	99.14	98.86	99.13	99.34	98.42	98.76
19/09/09 to 17/09/10	98.13	98.15	97.08	96.08	97.23	98.32	98.19	98.56	98.14	98.06	97.46	98.72	98.55
Min Standard	98.00	98.00	98.00	98.00	98.00	98.00	98.00	98.00	98.00	98.00	98.00	98.00	98.00

Kilometre figures are based on 4 weeks data