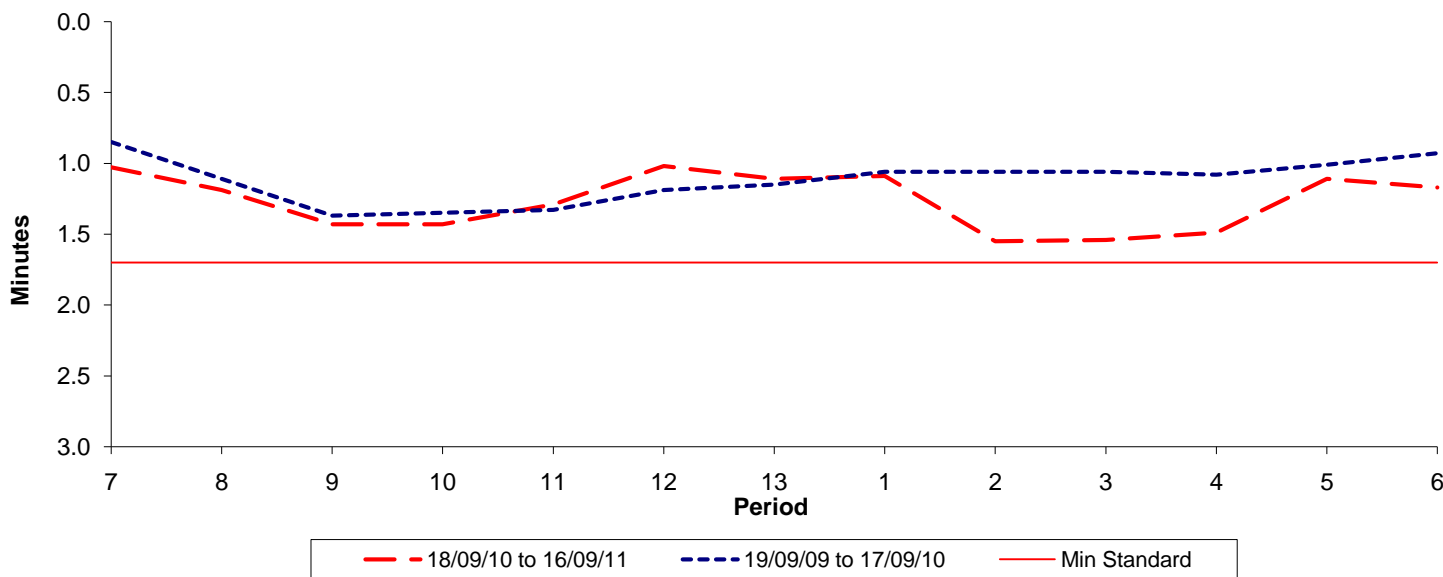




Reliability Performance (High Frequency)

Excess Waiting Time (minutes)

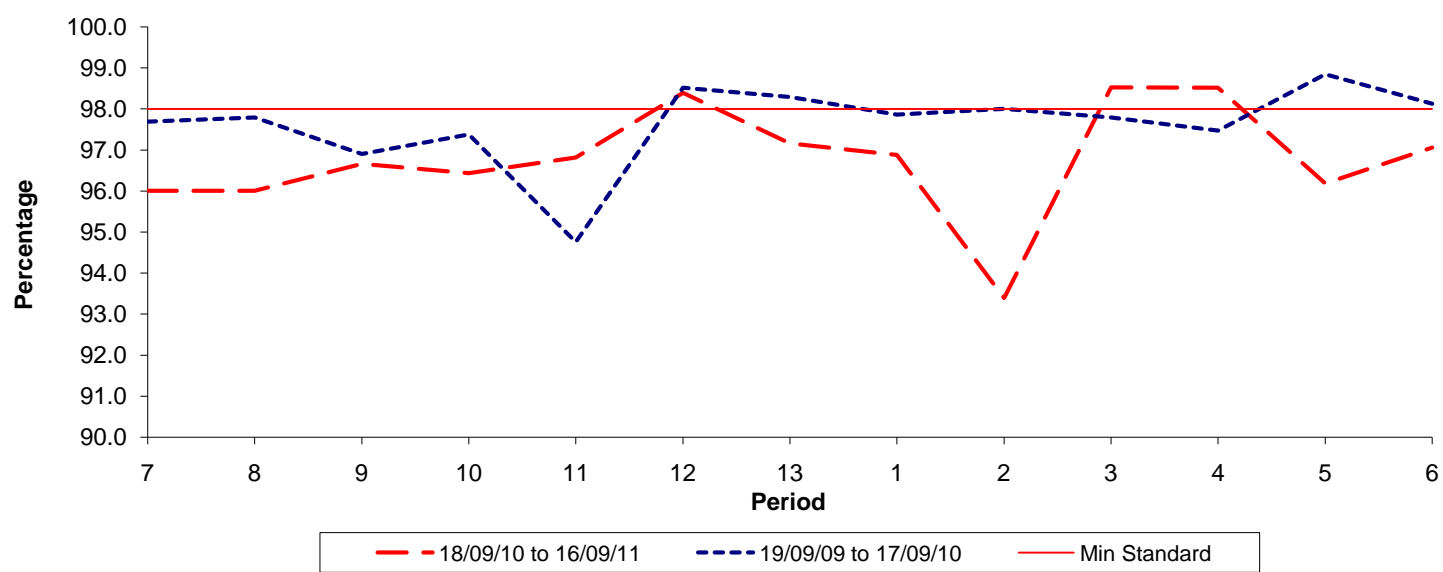


Date Range / Period	7	8	9	10	11	12	13	1	2	3	4	5	6
18/09/10 to 16/09/11	1.03	1.19	1.43	1.43	1.29	1.02	1.11	1.09	1.55	1.54	1.49	1.11	1.17
19/09/09 to 17/09/10	0.85	1.11	1.37	1.35	1.33	1.19	1.15	1.06	1.06	1.06	1.08	1.01	0.93
Min Standard	1.70	1.70	1.70	1.70	1.70	1.70	1.70	1.70	1.70	1.70	1.70	1.70	1.70

Excess Waiting Time figures are based on 12 weeks data

Kilometre Performance

% Kilometres Operated



Date Range / Period	7	8	9	10	11	12	13	1	2	3	4	5	6
18/09/10 to 16/09/11	96.01	96.00	96.66	96.44	96.82	98.39	97.16	96.88	93.39	98.53	98.52	96.19	97.06
19/09/09 to 17/09/10	97.69	97.79	96.91	97.38	94.76	98.52	98.29	97.87	98.00	97.79	97.47	98.85	98.13
Min Standard	98.00	98.00	98.00	98.00	98.00	98.00	98.00	98.00	98.00	98.00	98.00	98.00	98.00

Kilometre figures are based on 4 weeks data