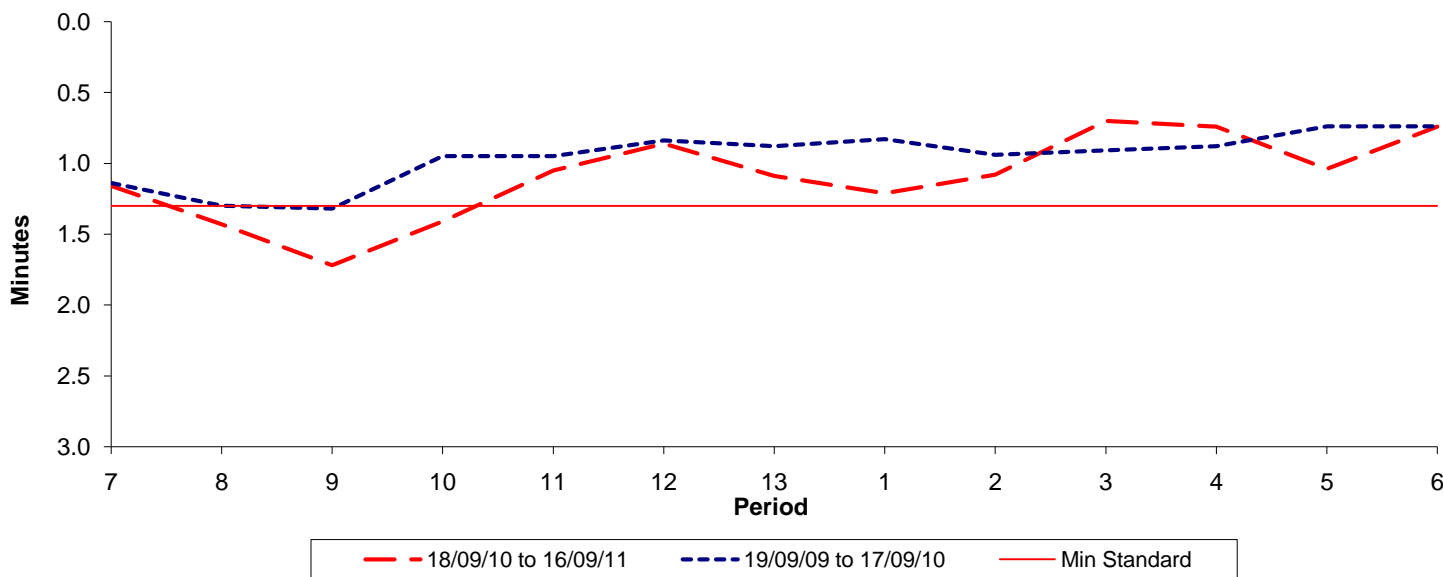




**Reliability Performance ( High Frequency )**

**Excess Waiting Time (minutes)**

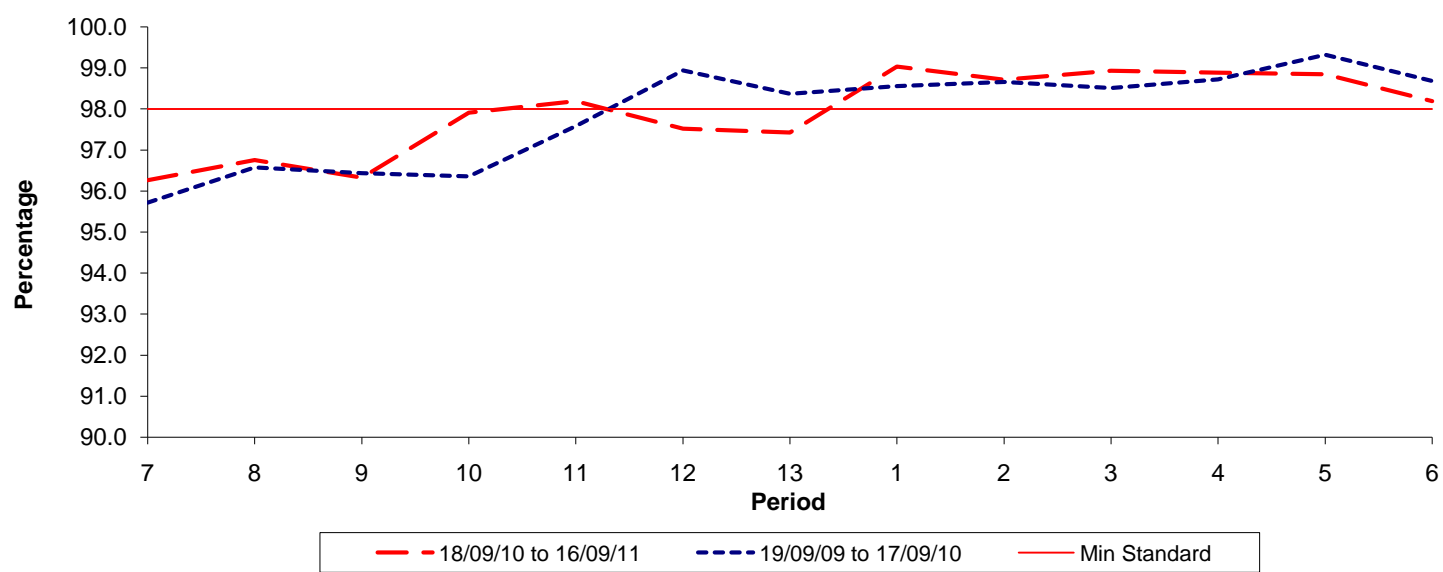


Date Range / Period	7	8	9	10	11	12	13	1	2	3	4	5	6
18/09/10 to 16/09/11	1.16	1.43	1.72	1.41	1.05	0.86	1.09	1.21	1.08	0.70	0.74	1.04	0.74
19/09/09 to 17/09/10	1.14	1.30	1.32	0.95	0.95	0.84	0.88	0.83	0.94	0.91	0.88	0.74	0.74
Min Standard	1.30	1.30	1.30	1.30	1.30	1.30	1.30	1.30	1.30	1.30	1.30	1.30	1.30

Excess Waiting Time figures are based on 12 weeks data

**Kilometre Performance**

**% Kilometres Operated**



Date Range / Period	7	8	9	10	11	12	13	1	2	3	4	5	6
18/09/10 to 16/09/11	96.26	96.75	96.32	97.91	98.19	97.52	97.42	99.03	98.71	98.93	98.88	98.84	98.19
19/09/09 to 17/09/10	95.72	96.58	96.44	96.36	97.58	98.94	98.37	98.56	98.66	98.51	98.72	99.32	98.68
Min Standard	98.00	98.00	98.00	98.00	98.00	98.00	98.00	98.00	98.00	98.00	98.00	98.00	98.00

Kilometre figures are based on 4 weeks data