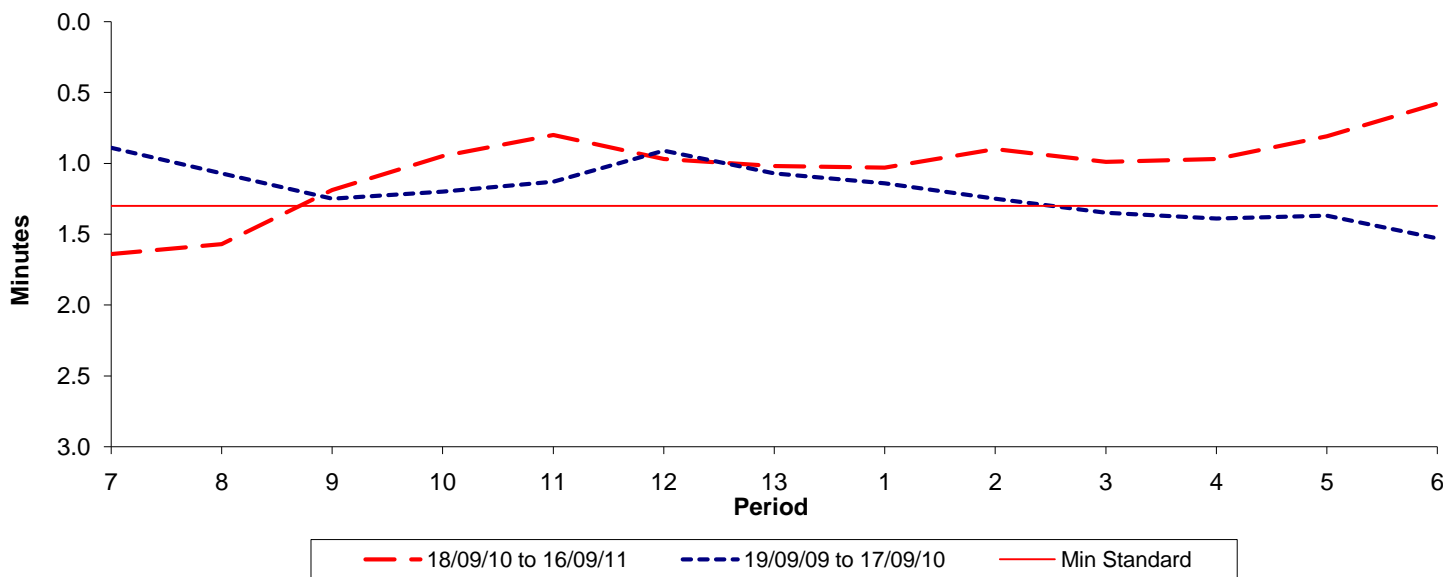




Reliability Performance (High Frequency)

Excess Waiting Time (minutes)

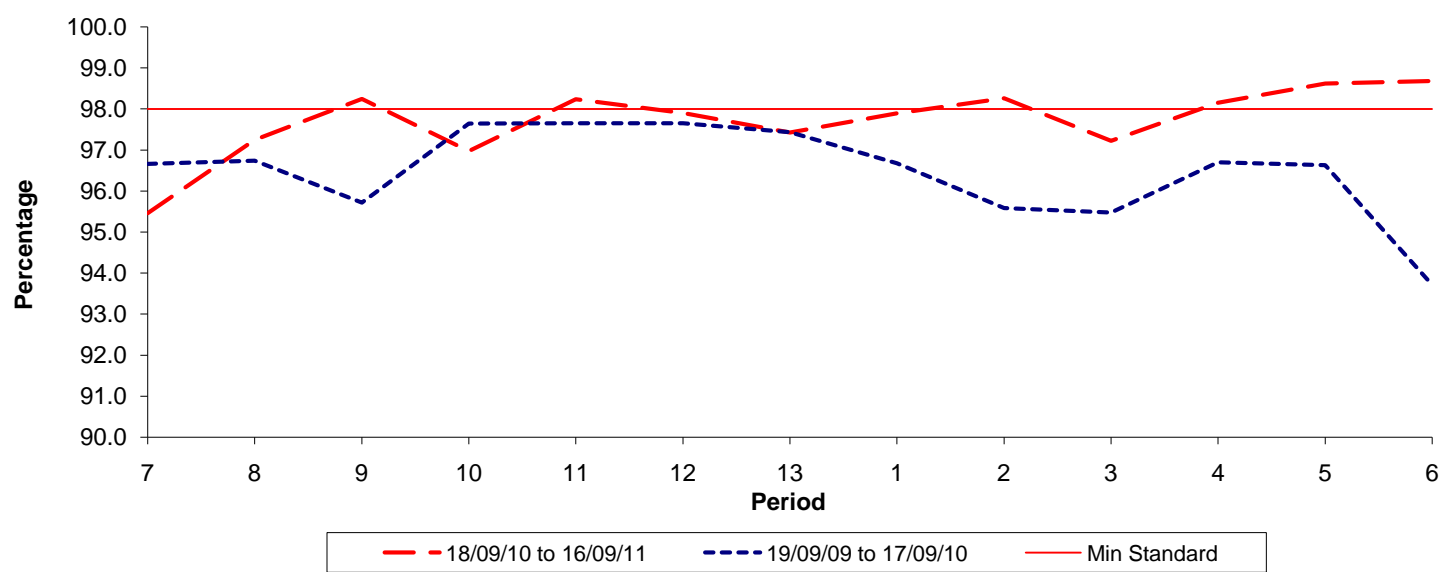


Date Range / Period	7	8	9	10	11	12	13	1	2	3	4	5	6
18/09/10 to 16/09/11	1.64	1.57	1.19	0.95	0.80	0.97	1.02	1.03	0.90	0.99	0.97	0.81	0.58
19/09/09 to 17/09/10	0.89	1.07	1.25	1.20	1.13	0.91	1.07	1.14	1.25	1.35	1.39	1.37	1.53
Min Standard	1.30	1.30	1.30	1.30	1.30	1.30	1.30	1.30	1.30	1.30	1.30	1.30	1.30

Excess Waiting Time figures are based on 12 weeks data

Kilometre Performance

% Kilometres Operated



Date Range / Period	7	8	9	10	11	12	13	1	2	3	4	5	6
18/09/10 to 16/09/11	95.46	97.24	98.24	96.97	98.23	97.90	97.42	97.89	98.26	97.22	98.15	98.62	98.68
19/09/09 to 17/09/10	96.66	96.74	95.72	97.64	97.65	97.65	97.43	96.67	95.59	95.48	96.70	96.63	93.71
Min Standard	98.00	98.00	98.00	98.00	98.00	98.00	98.00	98.00	98.00	98.00	98.00	98.00	98.00

Kilometre figures are based on 4 weeks data