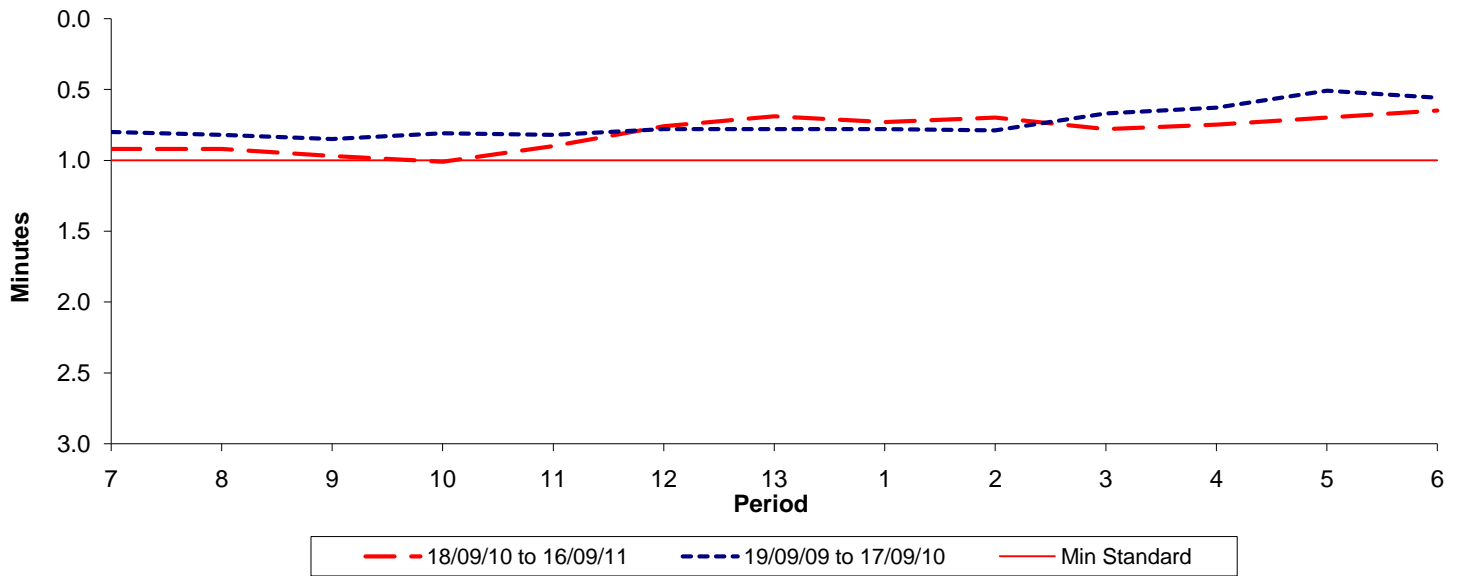




Reliability Performance (High Frequency)

Excess Waiting Time (minutes)

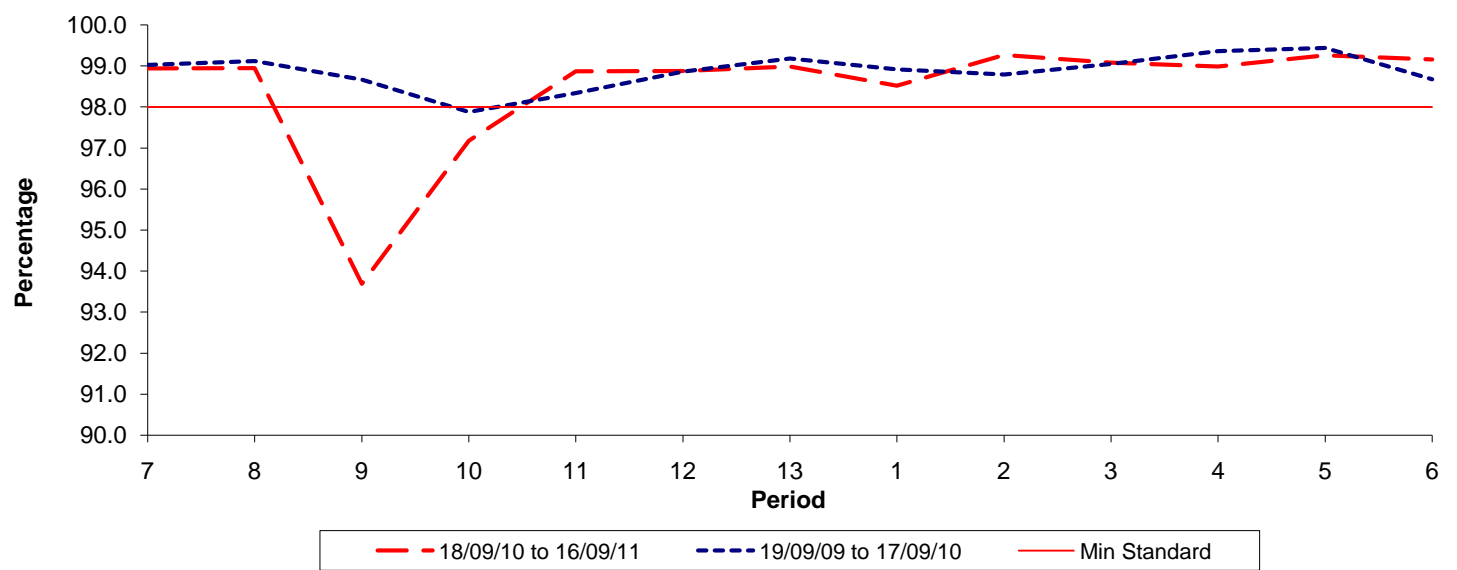


Date Range / Period	7	8	9	10	11	12	13	1	2	3	4	5	6
18/09/10 to 16/09/11	0.92	0.92	0.97	1.01	0.90	0.76	0.69	0.73	0.70	0.78	0.75	0.70	0.65
19/09/09 to 17/09/10	0.80	0.82	0.85	0.81	0.82	0.78	0.78	0.78	0.79	0.67	0.63	0.51	0.56
Min Standard	1.00	1.00	1.00	1.00	1.00	1.00	1.00	1.00	1.00	1.00	1.00	1.00	1.00

Excess Waiting Time figures are based on 12 weeks data

Kilometre Performance

% Kilometres Operated



Date Range / Period	7	8	9	10	11	12	13	1	2	3	4	5	6
18/09/10 to 16/09/11	98.94	98.95	93.69	97.18	98.87	98.88	98.99	98.52	99.27	99.08	98.99	99.26	99.16
19/09/09 to 17/09/10	99.02	99.12	98.67	97.88	98.34	98.86	99.18	98.92	98.79	99.05	99.36	99.44	98.68
Min Standard	98.00	98.00	98.00	98.00	98.00	98.00	98.00	98.00	98.00	98.00	98.00	98.00	98.00

Kilometre figures are based on 4 weeks data