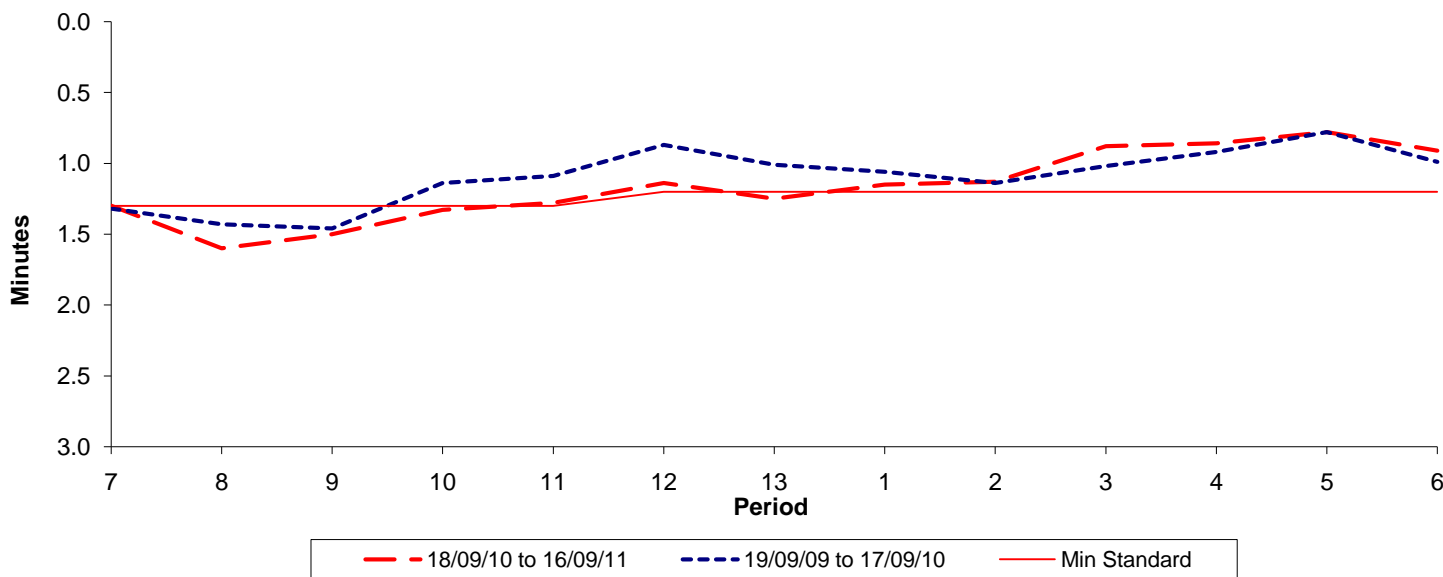




Reliability Performance (High Frequency)

Excess Waiting Time (minutes)

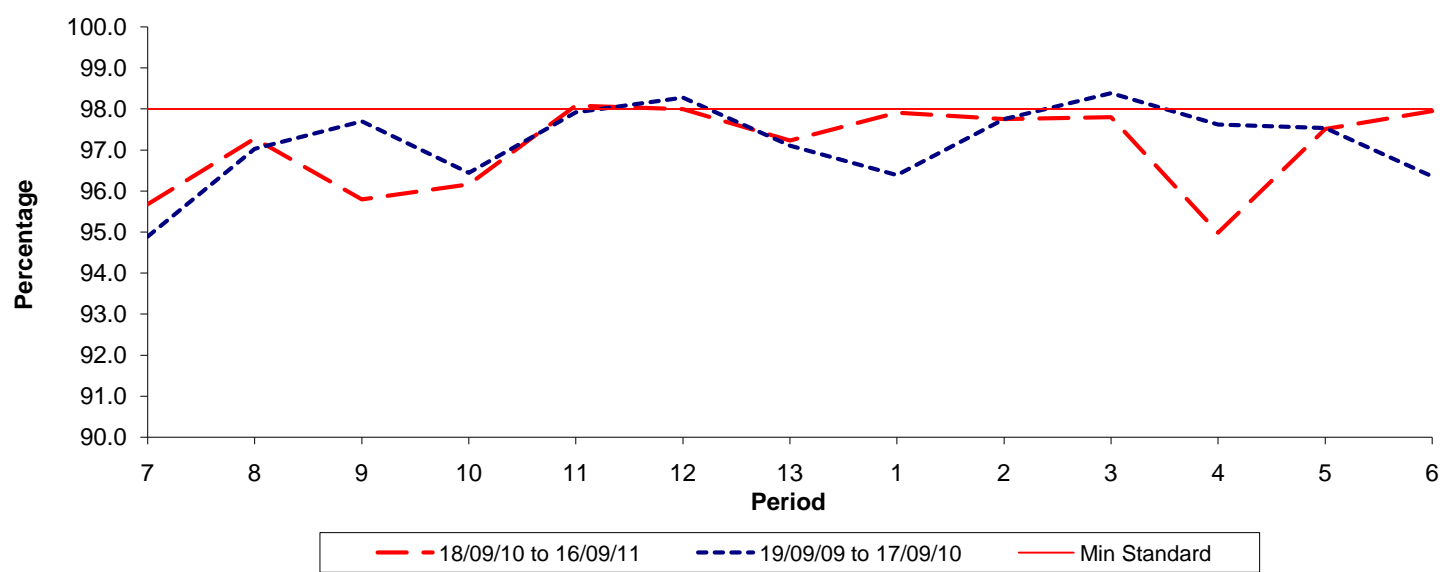


Date Range / Period	7	8	9	10	11	12	13	1	2	3	4	5	6
18/09/10 to 16/09/11	1.30	1.60	1.50	1.33	1.28	1.14	1.25	1.15	1.13	0.88	0.86	0.78	0.91
19/09/09 to 17/09/10	1.32	1.43	1.46	1.14	1.09	0.87	1.01	1.06	1.14	1.02	0.92	0.78	0.99
Min Standard	1.30	1.30	1.30	1.30	1.30	1.20	1.20	1.20	1.20	1.20	1.20	1.20	1.20

Excess Waiting Time figures are based on 12 weeks data

Kilometre Performance

% Kilometres Operated



Date Range / Period	7	8	9	10	11	12	13	1	2	3	4	5	6
18/09/10 to 16/09/11	95.67	97.28	95.79	96.16	98.08	97.99	97.23	97.91	97.75	97.80	94.98	97.51	97.95
19/09/09 to 17/09/10	94.89	97.03	97.70	96.44	97.92	98.28	97.10	96.39	97.75	98.39	97.62	97.54	96.36
Min Standard	98.00	98.00	98.00	98.00	98.00	98.00	98.00	98.00	98.00	98.00	98.00	98.00	98.00

Kilometre figures are based on 4 weeks data