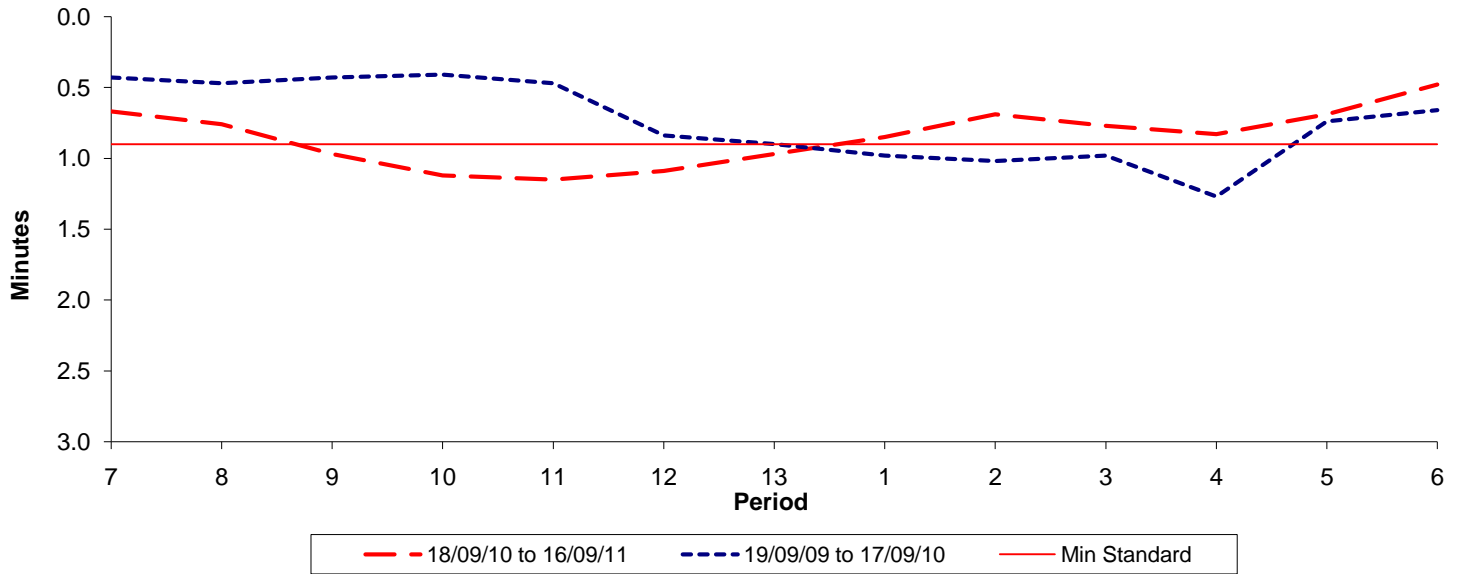




**Reliability Performance ( High Frequency )**

**Excess Waiting Time (minutes)**

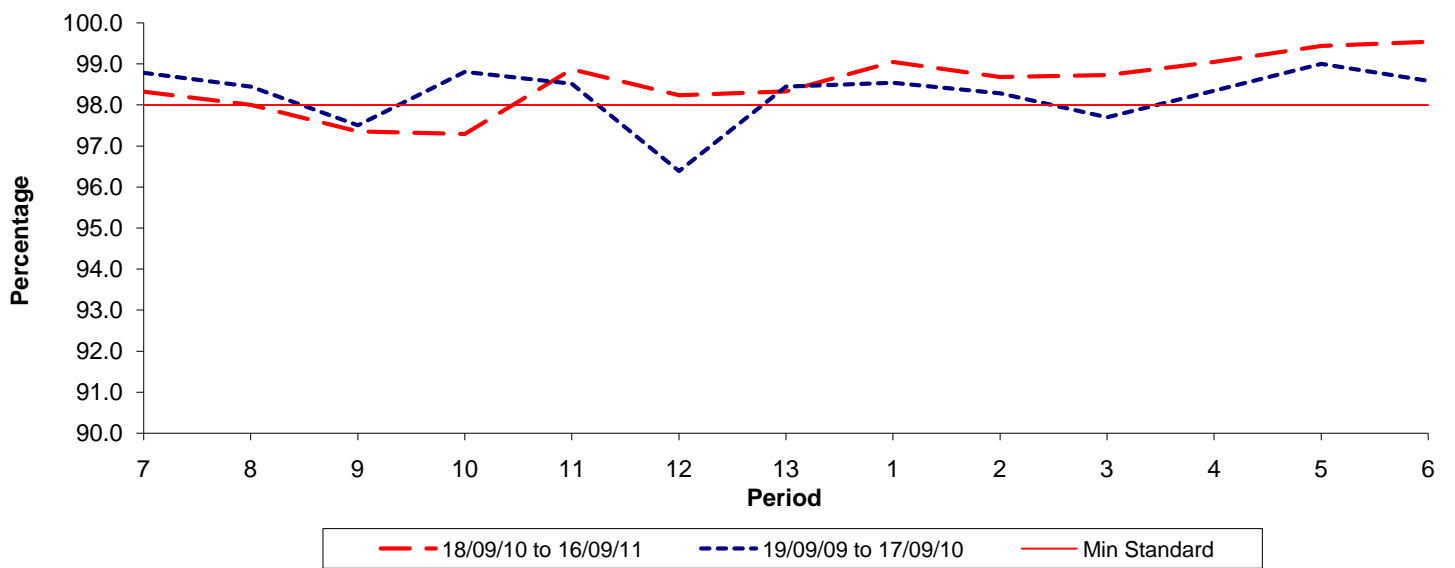


Date Range / Period	7	8	9	10	11	12	13	1	2	3	4	5	6
18/09/10 to 16/09/11	0.67	0.76	0.97	1.12	1.15	1.09	0.97	0.85	0.69	0.77	0.83	0.69	0.48
19/09/09 to 17/09/10	0.43	0.47	0.43	0.41	0.47	0.84	0.90	0.98	1.02	0.98	1.27	0.74	0.66
Min Standard	0.90	0.90	0.90	0.90	0.90	0.90	0.90	0.90	0.90	0.90	0.90	0.90	0.90

Excess Waiting Time figures are based on 12 weeks data

**Kilometre Performance**

**% Kilometres Operated**



Date Range / Period	7	8	9	10	11	12	13	1	2	3	4	5	6
18/09/10 to 16/09/11	98.32	98.01	97.36	97.30	98.87	98.24	98.33	99.05	98.68	98.73	99.05	99.44	99.54
19/09/09 to 17/09/10	98.78	98.45	97.51	98.81	98.52	96.39	98.45	98.55	98.29	97.70	98.35	99.00	98.59
Min Standard	98.00	98.00	98.00	98.00	98.00	98.00	98.00	98.00	98.00	98.00	98.00	98.00	98.00

Kilometre figures are based on 4 weeks data