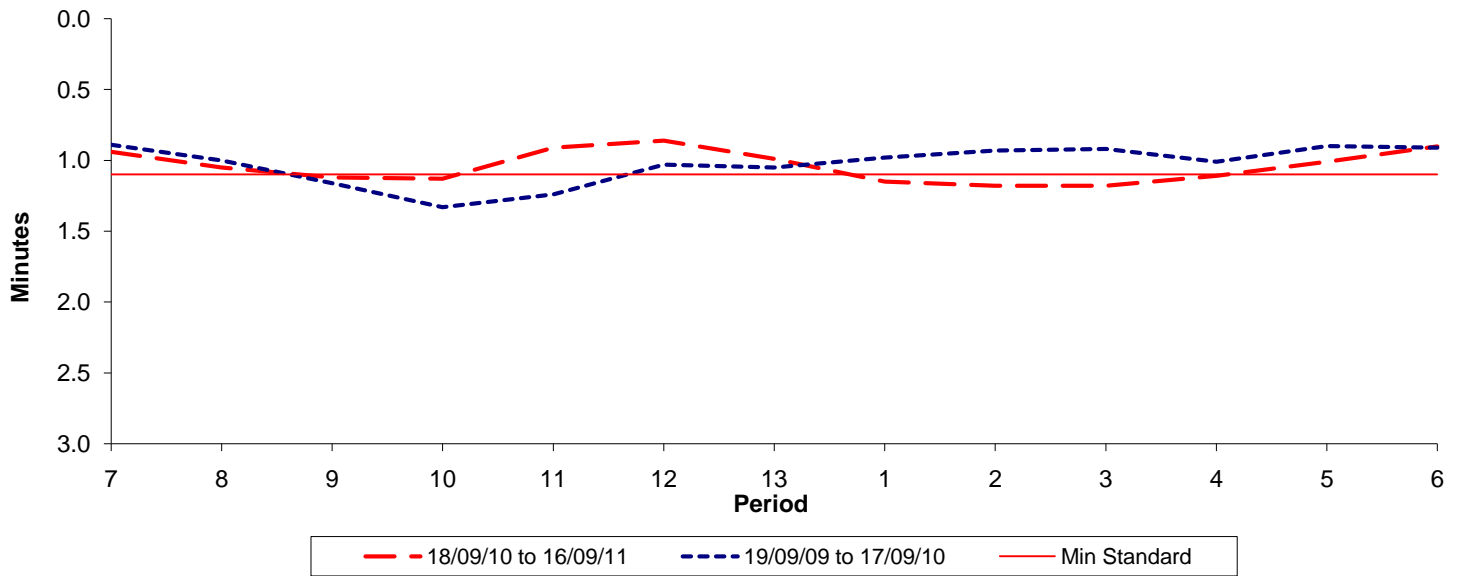




Reliability Performance (High Frequency)

Excess Waiting Time (minutes)

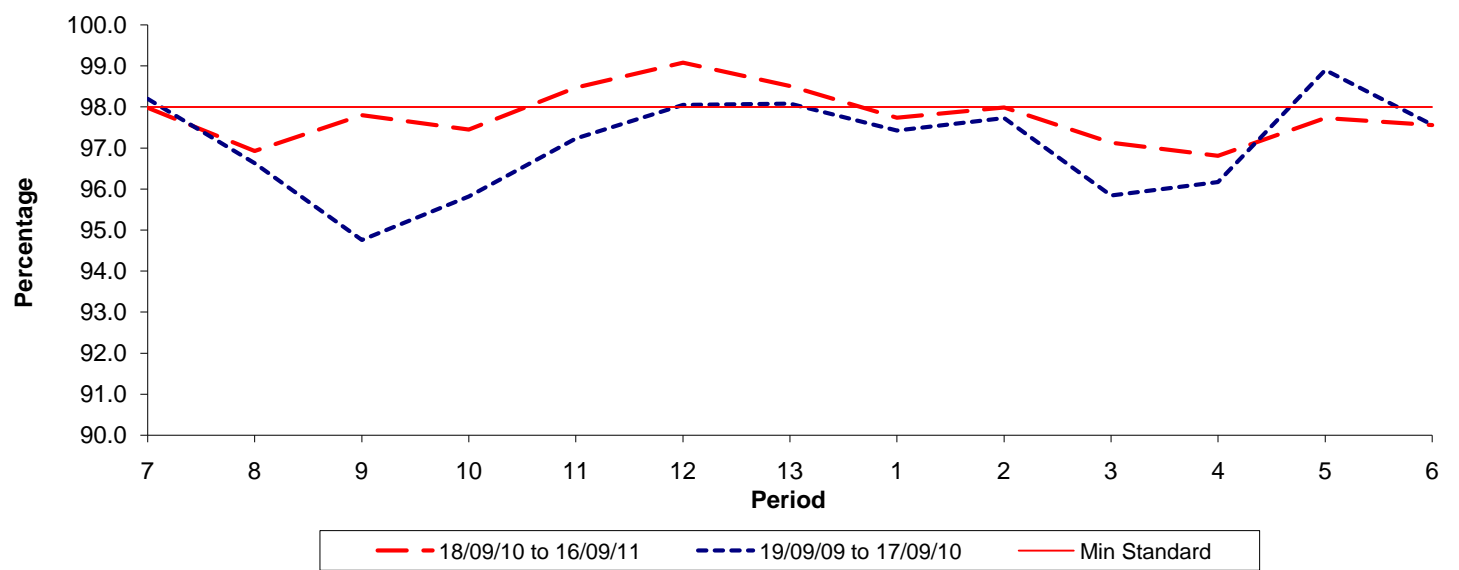


Date Range / Period	7	8	9	10	11	12	13	1	2	3	4	5	6
18/09/10 to 16/09/11	0.94	1.05	1.12	1.13	0.91	0.86	0.99	1.15	1.18	1.18	1.11	1.01	0.90
19/09/09 to 17/09/10	0.89	1.00	1.16	1.33	1.24	1.03	1.05	0.98	0.93	0.92	1.01	0.90	0.91
Min Standard	1.10	1.10	1.10	1.10	1.10	1.10	1.10	1.10	1.10	1.10	1.10	1.10	1.10

Excess Waiting Time figures are based on 12 weeks data

Kilometre Performance

% Kilometres Operated



Date Range / Period	7	8	9	10	11	12	13	1	2	3	4	5	6
18/09/10 to 16/09/11	97.98	96.93	97.80	97.45	98.47	99.08	98.51	97.74	97.99	97.13	96.81	97.73	97.56
19/09/09 to 17/09/10	98.20	96.63	94.76	95.82	97.23	98.05	98.08	97.43	97.73	95.84	96.17	98.90	97.57
Min Standard	98.00	98.00	98.00	98.00	98.00	98.00	98.00	98.00	98.00	98.00	98.00	98.00	98.00

Kilometre figures are based on 4 weeks data