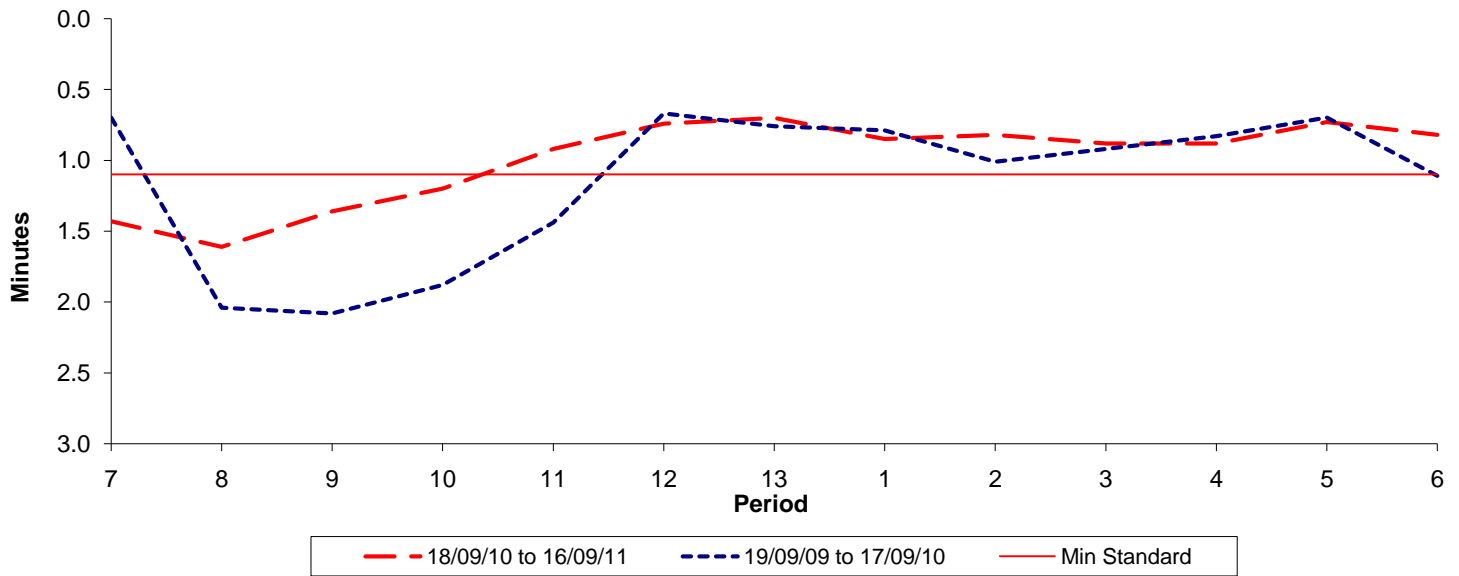




**Reliability Performance ( High Frequency )**

**Excess Waiting Time (minutes)**

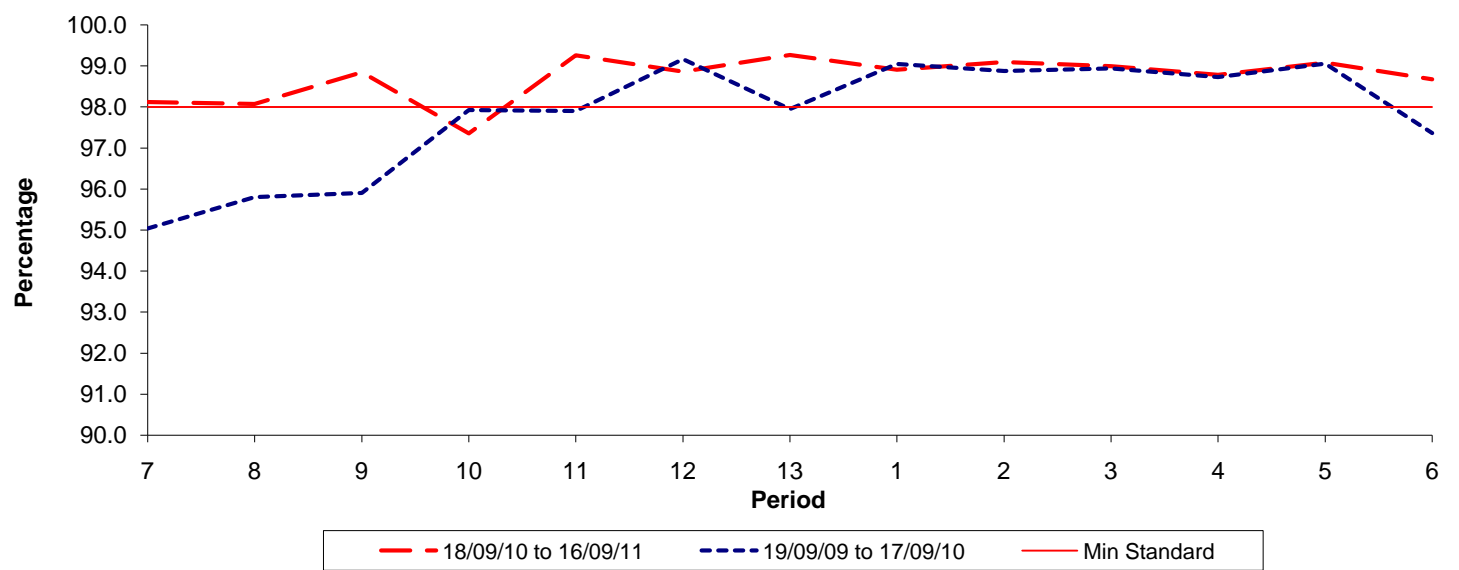


Date Range / Period	7	8	9	10	11	12	13	1	2	3	4	5	6
18/09/10 to 16/09/11	1.43	1.61	1.36	1.20	0.92	0.74	0.70	0.85	0.82	0.88	0.88	0.73	0.82
19/09/09 to 17/09/10	0.70	2.04	2.08	1.88	1.44	0.67	0.76	0.79	1.01	0.92	0.83	0.70	1.11
Min Standard	1.10	1.10	1.10	1.10	1.10	1.10	1.10	1.10	1.10	1.10	1.10	1.10	1.10

Excess Waiting Time figures are based on 12 weeks data

**Kilometre Performance**

**% Kilometres Operated**



Date Range / Period	7	8	9	10	11	12	13	1	2	3	4	5	6
18/09/10 to 16/09/11	98.12	98.07	98.85	97.36	99.26	98.86	99.27	98.91	99.10	99.00	98.79	99.08	98.68
19/09/09 to 17/09/10	95.04	95.80	95.90	97.93	97.90	99.17	97.95	99.05	98.88	98.95	98.74	99.06	97.37
Min Standard	98.00	98.00	98.00	98.00	98.00	98.00	98.00	98.00	98.00	98.00	98.00	98.00	98.00

Kilometre figures are based on 4 weeks data