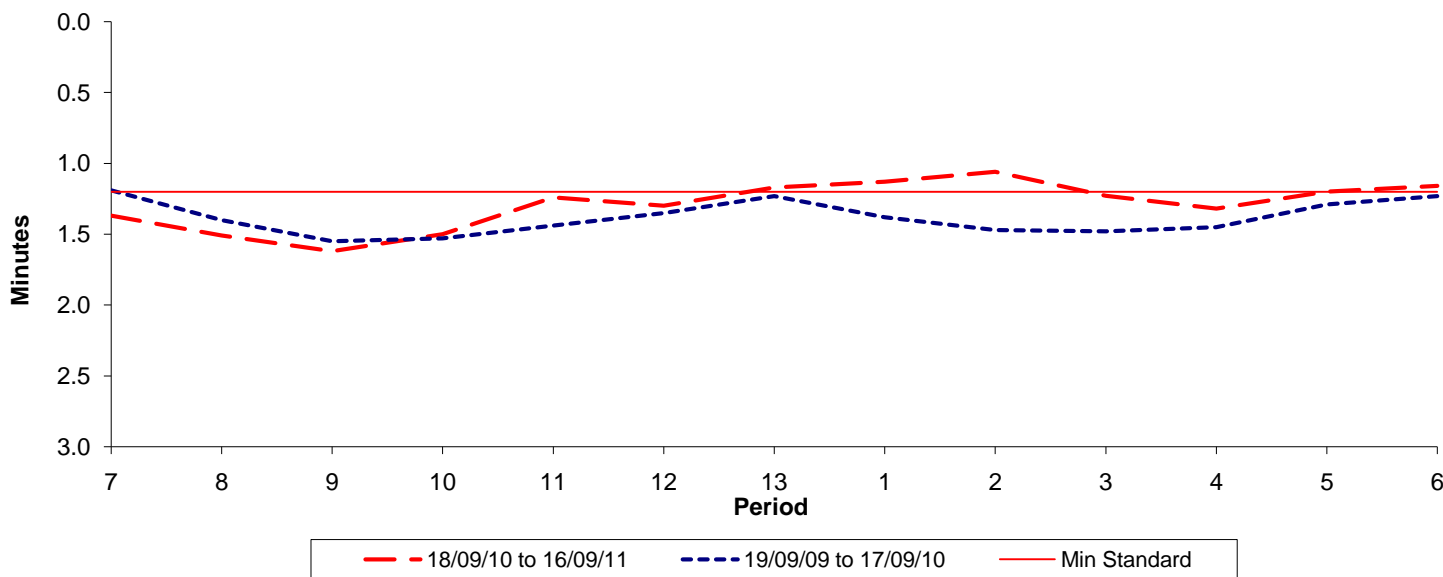




Reliability Performance (High Frequency)

Excess Waiting Time (minutes)

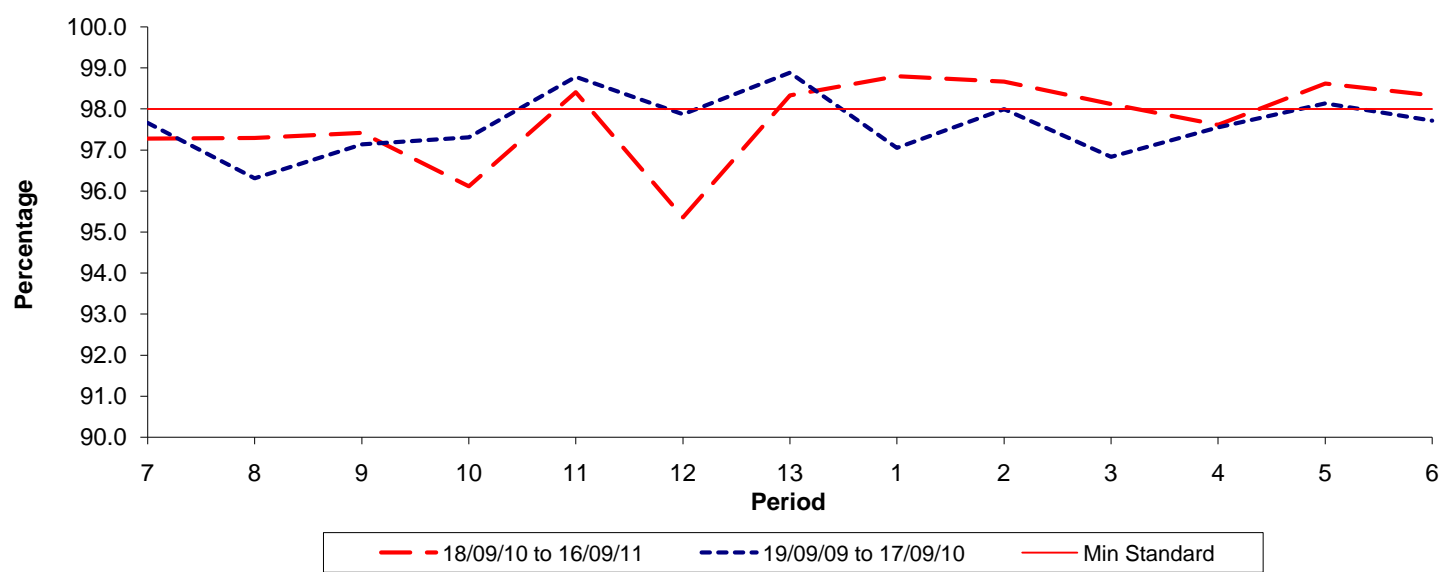


Date Range / Period	7	8	9	10	11	12	13	1	2	3	4	5	6
18/09/10 to 16/09/11	1.37	1.51	1.62	1.50	1.24	1.30	1.17	1.13	1.06	1.23	1.32	1.20	1.16
19/09/09 to 17/09/10	1.19	1.40	1.55	1.53	1.44	1.35	1.23	1.38	1.47	1.48	1.45	1.29	1.23
Min Standard	1.20	1.20	1.20	1.20	1.20	1.20	1.20	1.20	1.20	1.20	1.20	1.20	1.20

Excess Waiting Time figures are based on 12 weeks data

Kilometre Performance

% Kilometres Operated



Date Range / Period	7	8	9	10	11	12	13	1	2	3	4	5	6
18/09/10 to 16/09/11	97.28	97.29	97.42	96.11	98.41	95.36	98.33	98.80	98.67	98.12	97.61	98.62	98.33
19/09/09 to 17/09/10	97.66	96.31	97.14	97.31	98.78	97.87	98.88	97.05	97.99	96.83	97.55	98.13	97.72
Min Standard	98.00	98.00	98.00	98.00	98.00	98.00	98.00	98.00	98.00	98.00	98.00	98.00	98.00

Kilometre figures are based on 4 weeks data