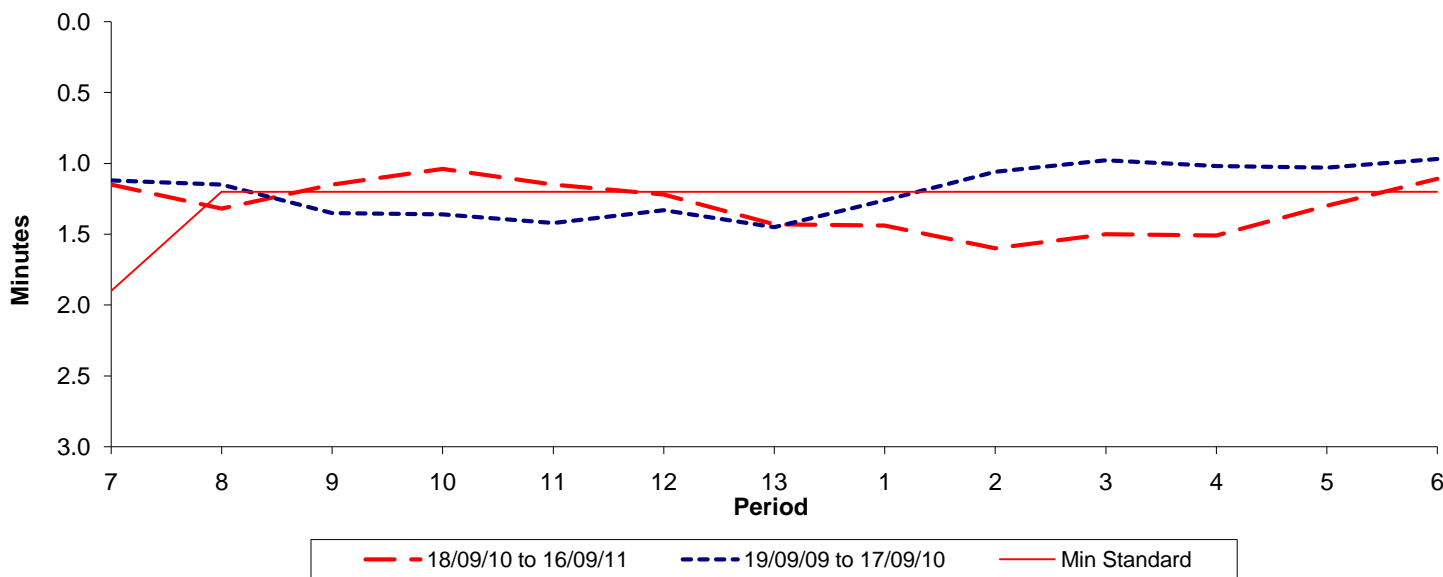




**Reliability Performance ( High Frequency )**

**Excess Waiting Time (minutes)**

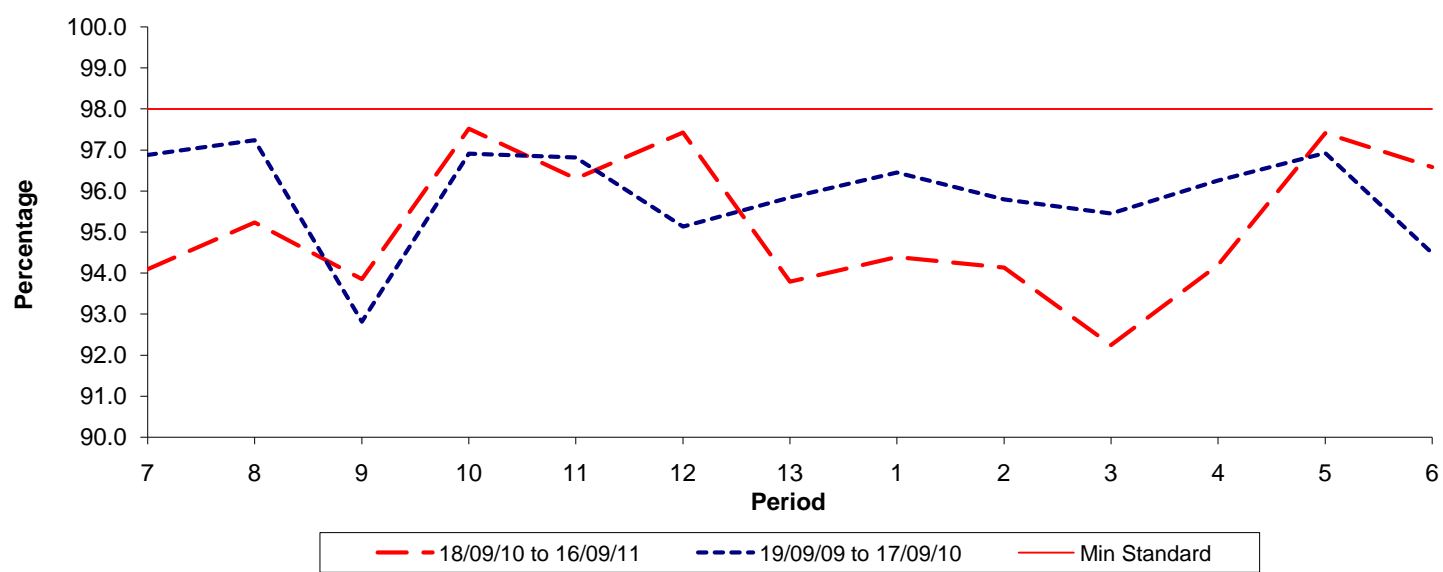


Date Range / Period	7	8	9	10	11	12	13	1	2	3	4	5	6
18/09/10 to 16/09/11	1.15	1.32	1.15	1.04	1.15	1.22	1.43	1.44	1.60	1.50	1.51	1.30	1.11
19/09/09 to 17/09/10	1.12	1.15	1.35	1.36	1.42	1.33	1.45	1.26	1.06	0.98	1.02	1.03	0.97
Min Standard	1.90	1.20	1.20	1.20	1.20	1.20	1.20	1.20	1.20	1.20	1.20	1.20	1.20

Excess Waiting Time figures are based on 12 weeks data

**Kilometre Performance**

**% Kilometres Operated**



Date Range / Period	7	8	9	10	11	12	13	1	2	3	4	5	6
18/09/10 to 16/09/11	94.09	95.23	93.85	97.52	96.30	97.43	93.79	94.39	94.13	92.24	94.19	97.41	96.58
19/09/09 to 17/09/10	96.88	97.24	92.82	96.91	96.82	95.13	95.84	96.45	95.80	95.45	96.26	96.92	94.49
Min Standard	98.00	98.00	98.00	98.00	98.00	98.00	98.00	98.00	98.00	98.00	98.00	98.00	98.00

Kilometre figures are based on 4 weeks data