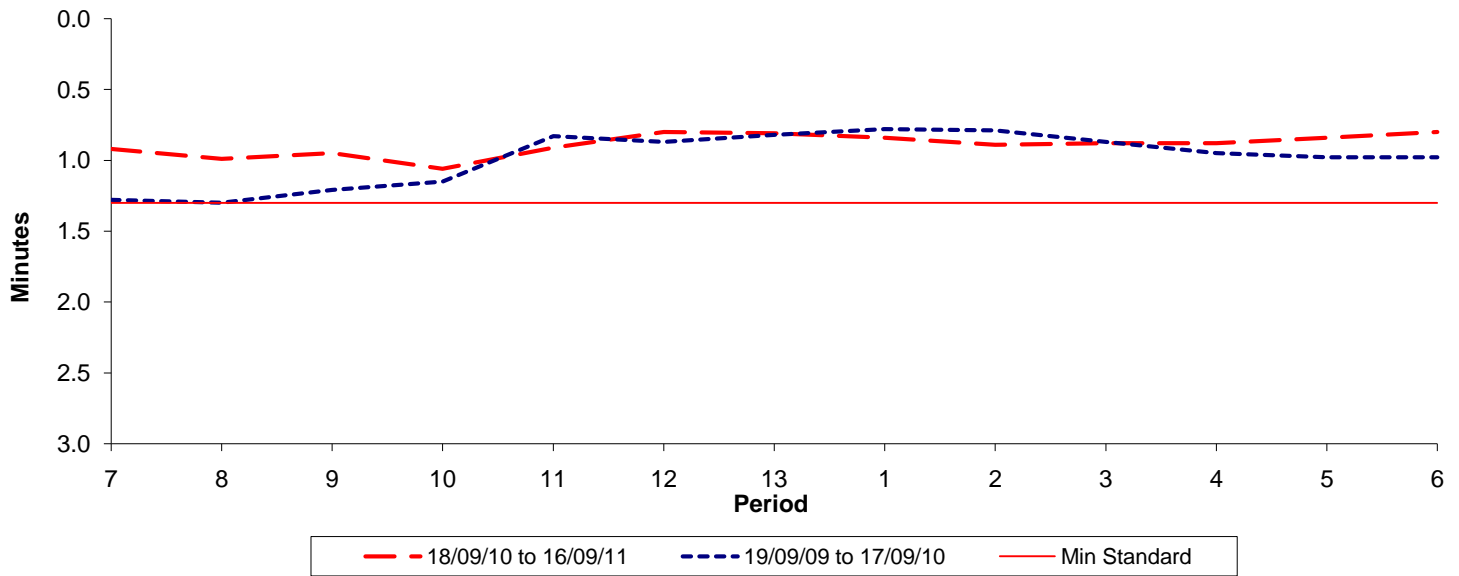




Reliability Performance (High Frequency)

Excess Waiting Time (minutes)

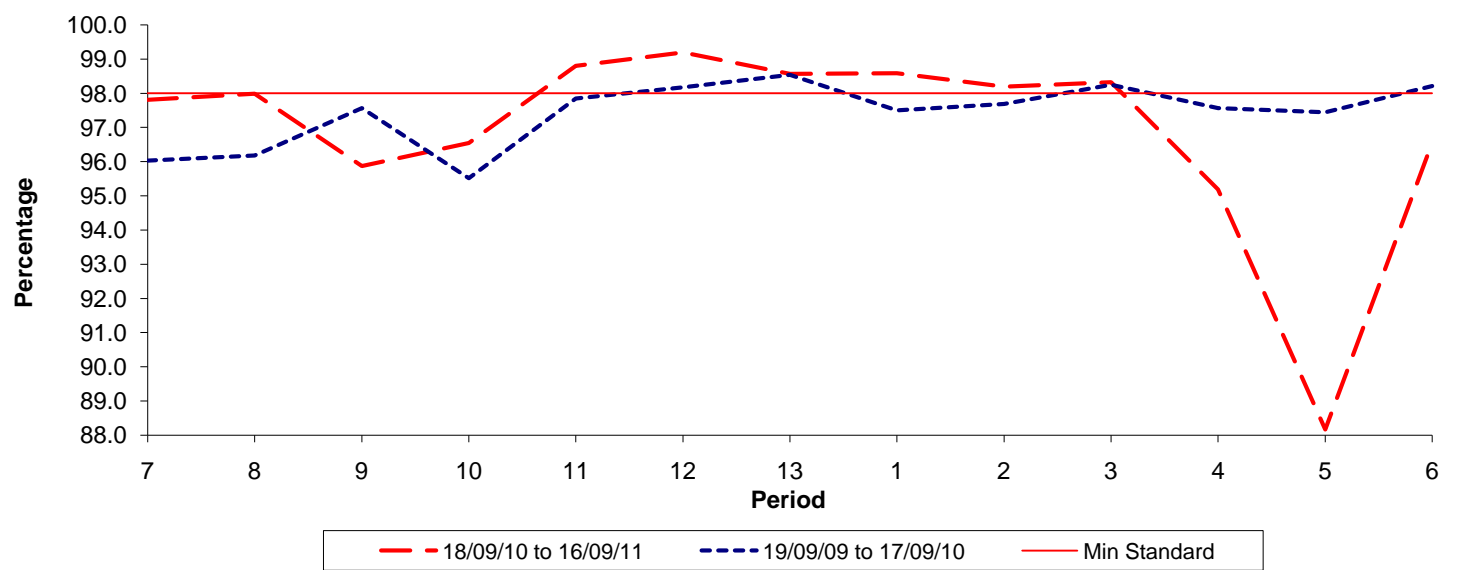


Date Range / Period	7	8	9	10	11	12	13	1	2	3	4	5	6
18/09/10 to 16/09/11	0.92	0.99	0.95	1.06	0.91	0.80	0.81	0.84	0.89	0.88	0.88	0.84	0.80
19/09/09 to 17/09/10	1.28	1.30	1.21	1.15	0.83	0.87	0.82	0.78	0.79	0.87	0.95	0.98	0.98
Min Standard	1.30	1.30	1.30	1.30	1.30	1.30	1.30	1.30	1.30	1.30	1.30	1.30	1.30

Excess Waiting Time figures are based on 12 weeks data

Kilometre Performance

% Kilometres Operated



Date Range / Period	7	8	9	10	11	12	13	1	2	3	4	5	6
18/09/10 to 16/09/11	97.81	97.99	95.87	96.55	98.81	99.20	98.57	98.59	98.20	98.33	95.19	88.16	96.56
19/09/09 to 17/09/10	96.03	96.18	97.57	95.52	97.85	98.18	98.54	97.50	97.69	98.25	97.57	97.45	98.21
Min Standard	98.00	98.00	98.00	98.00	98.00	98.00	98.00	98.00	98.00	98.00	98.00	98.00	98.00

Kilometre figures are based on 4 weeks data